



Haven Court, 82 Banks Road, Poole BH13 7QG



Property Summary

We are delighted to present this beautifully appointed two-bedroom apartment, ideally located just moments away from the golden sands of Sandbanks Beach. Offering a rare opportunity to enjoy coastal living in one of the UK's most sought-after locations, this fully furnished apartment is available for a 6-month let starting from the beginning of September.



Key Features

- Two double bedroom apartment
- Fully furnished
- South facing balcony
- Large lounge with sea glimpses
- Bathroom with shower over bath
- Utility room
- Double glazing
- Garage
- Communal garden
- Situated moments away from Sandbanks Beach



About the Property

The property boasts a bright and spacious layout, including a large lounge with a sunny, south-facing balcony offering sea glimpses – the perfect spot to relax and unwind. The well-proportioned hallway leads to a bathroom complete with a bath and overhead shower, with access to with a utility room housing a washing machine, dryer, fridge freezer, and boiler. The apartment also offers a separate WC for added convenience. The kitchen features a breakfast bar, under-counter fridge, dishwasher, and ample storage. Both double bedrooms offer built-in wardrobes and dedicated vanity areas with the principle room offering glimpses of the sea.

Further benefits include double glazing, gas central heating, and a garage, with off-road parking available on a first-come, first-served basis. Residents also have access to a well-maintained communal garden, adding to the appeal of this well-located home. This apartment combines comfort, style, and location – an ideal home for anyone seeking a coastal lifestyle.

Council Tax Band: E

Sandbanks is known for being one of the UK's most exclusive places to live, with land values being one of the highest in the world. Located within a short distance of Canford Cliffs village and Lilliput, the Sandbanks peninsula offers sandy beaches with stunning and picturesque views towards Old Harry Rocks.

Poole and Bournemouth town centres are a short distance away, with mainline train links to Southampton and London Waterloo. The chain ferry provides access to The Purbecks, Studland and Swanage. There are a variety of amenities on Sandbanks such as Tesco Express, cafés, a newsagent and the famous Rick Stein restaurant.

Mays Residential Lettings are members of ARLA Propertymark.

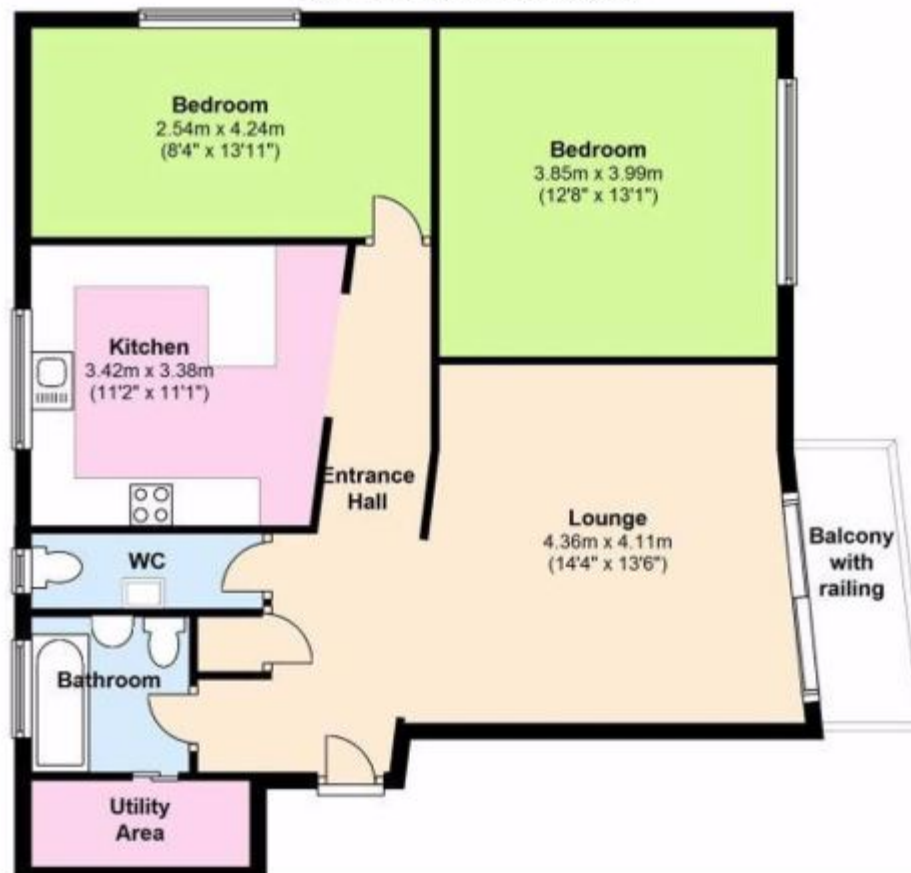
Our Client Money Protection is supplied by Propertymark Client Money Protection Scheme.

Mays are part of the Property Ombudsman Scheme TPO - DO3138



Second Floor

Approx. 80.6 sq. metres (867.6 sq. feet)





About the Location

Sandbanks is known for being one of the UK's most exclusive places to live, with land values being one of the highest in the world. Located within a short distance of Canford Cliffs village and Lilliput, the Sandbanks peninsula offers sandy beaches with stunning and picturesque views towards Old Harry Rocks.

Poole and Bournemouth town centres are a short distance away, with mainline train links to Southampton and London Waterloo. The chain ferry provides access to The Purbecks, Studland and Swanage. There are a variety of amenities on Sandbanks such as Tesco Express, cafés, a newsagent and the famous Rick Stein restaurant.

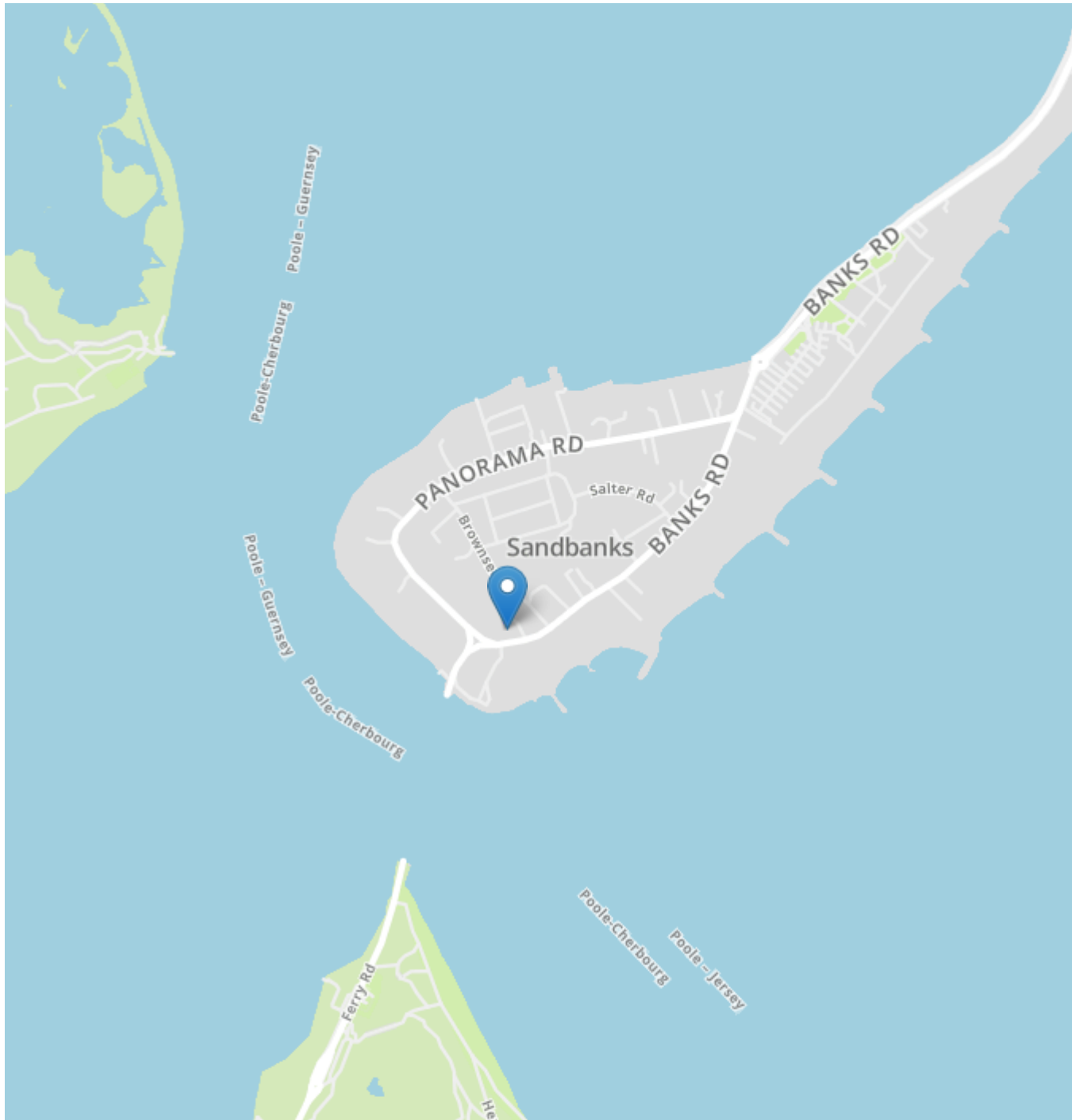



About Mays

We understand that property is a people business, and pride ourselves on having a diverse and multi-talented team of property professionals.

We have been successfully selling and letting property for more than 30 years, and our wealth of local knowledge combined with our experience in both the London market and overseas property, means our team can handle anything that comes their way.

Our reputation is a result of the unsurpassed level of service we offer and importantly the results we achieve for our clients. Our ethos is to 'Bring People and Property Together', after all it's what we've been doing so well for so long.



Energy Efficiency Rating		
	Current	Potential
Very energy efficient - lower running costs		
(92+) A		
(81-91) B		
(69-80) C	74	76
(55-68) D		
(39-54) E		
(21-38) F		
(1-20) G		
Not energy efficient - higher running costs		
England, Scotland & Wales		EU Directive 2002/91/EC 

Mays Lettings

Mays Residential Lettings are members of ARLA Propertymark. Our Client Money Protection is supplied by Propertymark Client Money Protection Scheme. Mays are part of the Property Ombudsman Scheme TPO - DO3138

Mays Estate Agents - LETTINGS

290 Sandbanks Road, Poole, Dorset BH14 8HX

T: 01202 709888

E: lettings@maysestateagents.com

www.maysestateagents.com

MAYS
ESTATE AGENTS