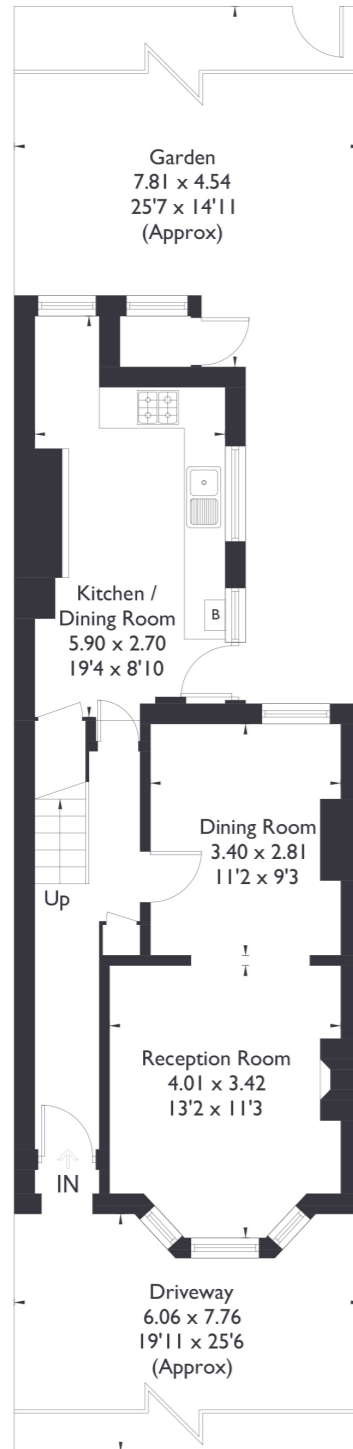
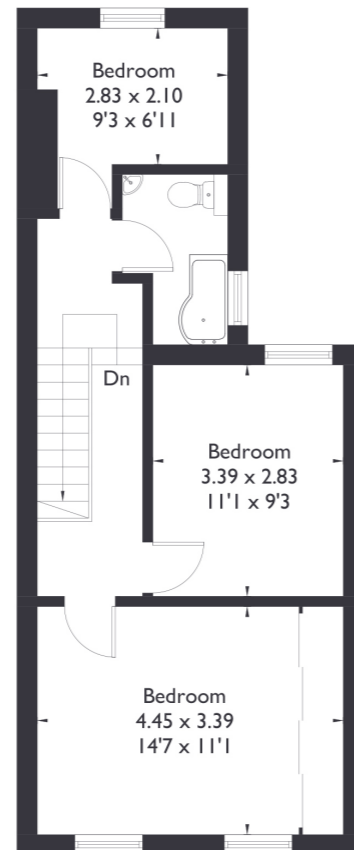


Northfield Avenue, W13

Approximate Floor Area = 91.4 sq m / 984 sq ft
Outdoor Cupboard = 0.8 sq m / 9 sq ft
Total = 92.2 sq m / 993 sq ft



Ground Floor



First Floor



3 BEDROOM HOUSE

Northfield Avenue, W13

£775,000

Welcome to this wonderful three bedroom, one bathroom property located in the heart of Northfields. This fantastic home offers amenities right at your doorstep. As you enter, you'll find a spacious reception room on your right, featuring a beautiful bay window that fills the room with natural light. Continuing through the hallway, you'll discover a wonderful kitchen with ample storage space, leading to a generously sized garden.

FEATURES

- Three Bedrooms
- One Bathroom
- Separate Kitchen/Diner
- Driveway Parking
- Fielding Primary School
- Northfields Station
- Northfields Amenities
- EPC Rating D



3 BEDROOM HOUSE

Northfield Avenue, W13

Upstairs, the property boasts three well proportioned bedrooms and a family bathroom.

With the potential to extend, this home is an excellent option for future growth. Additionally, there is a convenient driveway outside. This property is within the catchment area of the highly regarded Fielding Primary School and is just a 10 minute walk to Northfields Station, with another 10 minute walk to West Ealing Station for the Elizabeth Line, providing fantastic connections to the city. EPC Rating D.

