



Wellesley Road, London, W4 4BU

Cow & Co
LONDON



This spacious and light filled two bedroom apartment is available unfurnished from July. Located on the second floor of this beautiful period conversion it has excellent room sizes and is in fantastic condition throughout. There is a separate modern kitchen and a large reception dining room. Benefitting from two large double bedrooms and a beautiful bathroom this apartment is truly stunning.

Wellesley road is located within walking distance of Chiswick High Road, Chiswick Business Park and moments from Strand on the Green with its array of local shops, restaurants and pubs along the River Thames. There are also excellent transport links with Gunnersbury station close by, featuring the District line tube as well as the overground service and fantastic motor links to the M4 and Heathrow Airport.



- Two bedrooms
- Period property
- Large bright reception room
- Top floor located in the heart of Chiswick and very close to the river
- Excellent condition throughout
- Excellent amenities and transport links nearby
- Available unfurnished

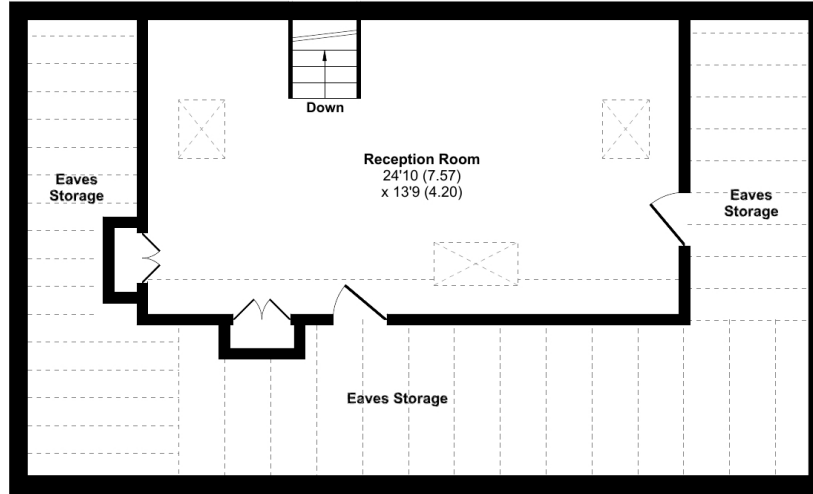


Wellesley Road, London, W4

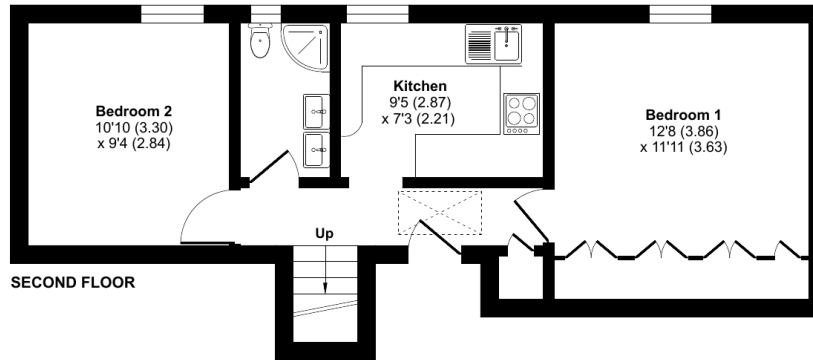
Approximate Area = 787 sq ft / 73.11 sq m (excludes eaves storage)

For identification only - Not to scale

Denotes restricted head height



MEZZANINE LEVEL



SECOND FLOOR



This floor plan was constructed using measurements provided to © nclhcom 2022 by a third party. Produced for Cow & Co Properties Ltd. REF: 849967

Tel: 0208 065 0010
Email: thehub@cowandco-london.com
Web: cowandco-london.com

Agents note: All measurements are approximate and whilst every attempt has been made to ensure accuracy they are for general guidance only and must not be relied on. The fixture and fittings referred to have not been tested and therefore no guarantee can be given that they are in working order. Internal photographs are reproduced for general information and it must not be inferred that any item shown is included with the property.

Cow & Co
LONDON