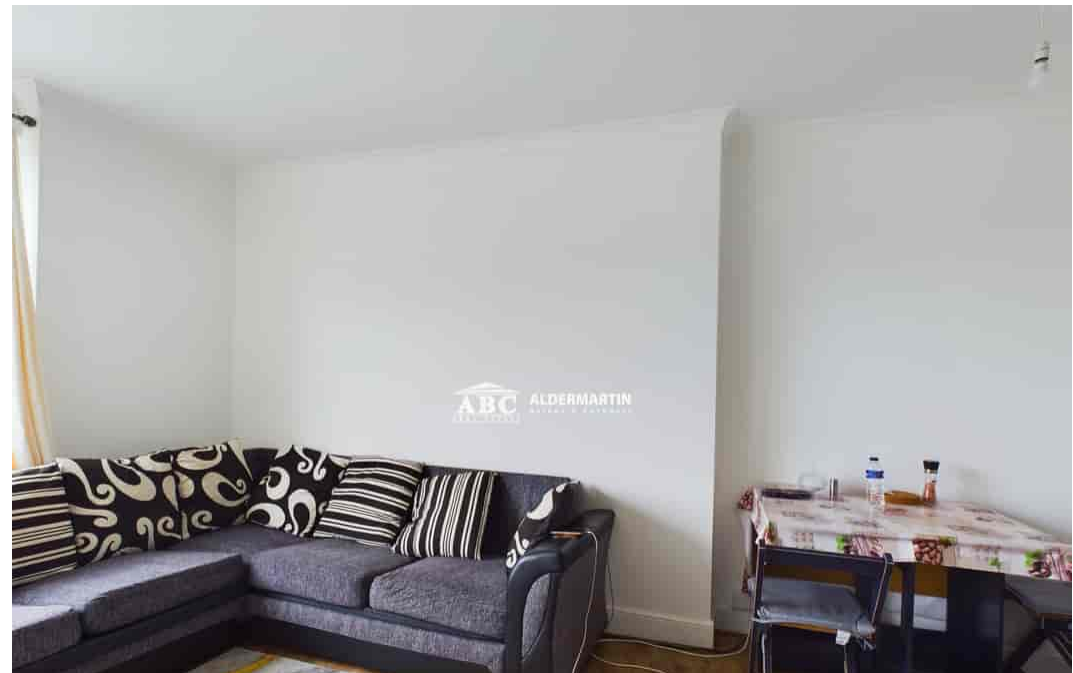
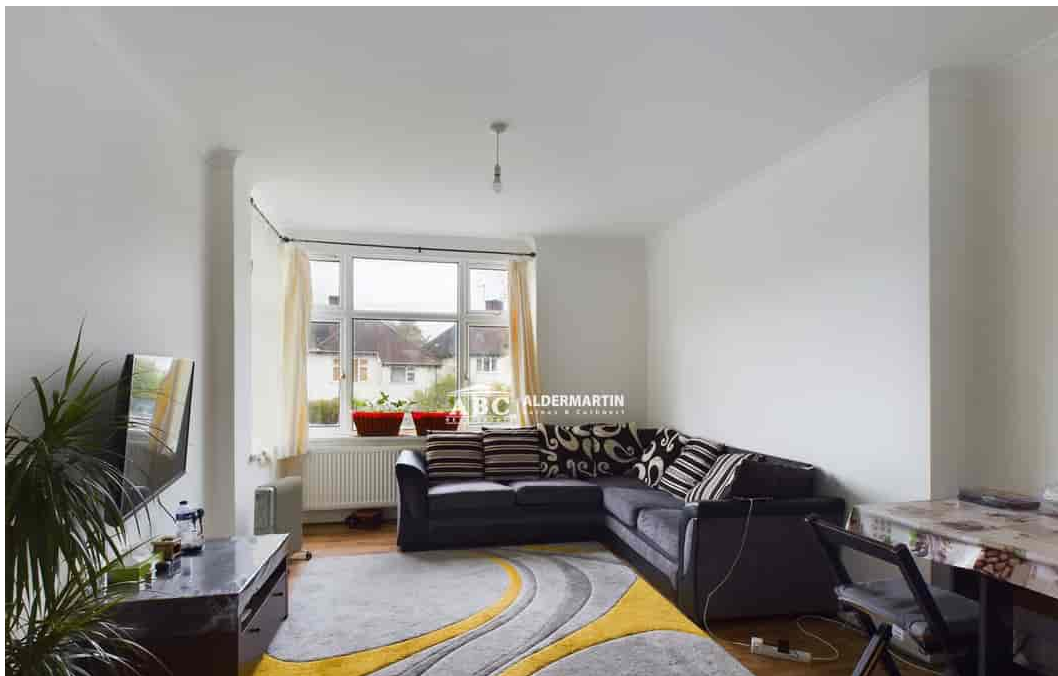
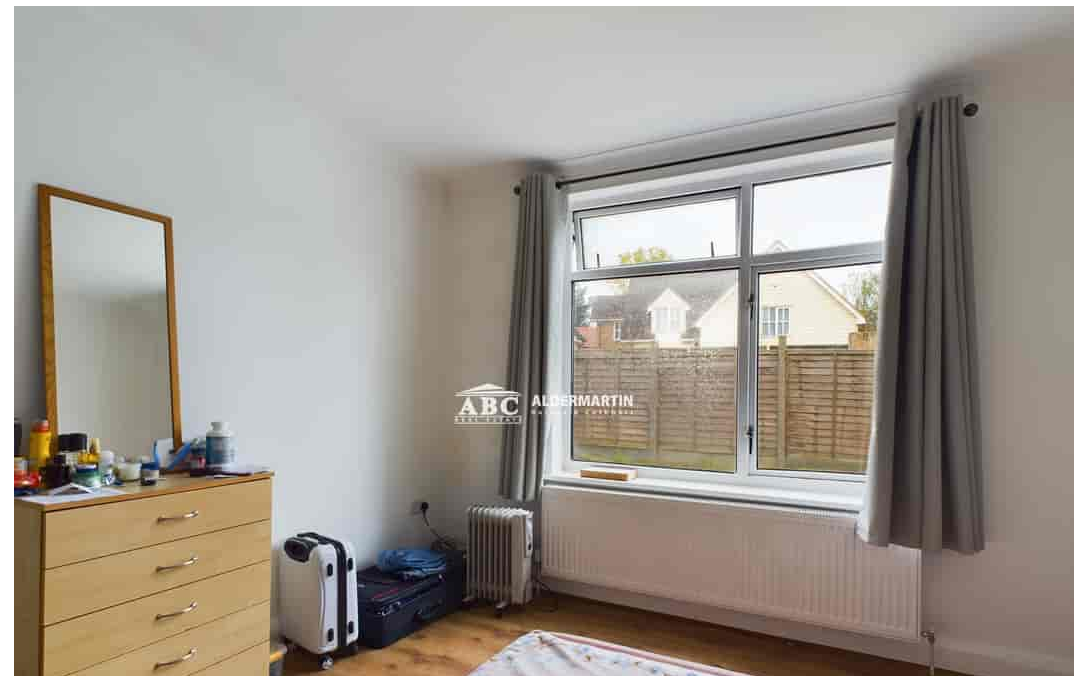
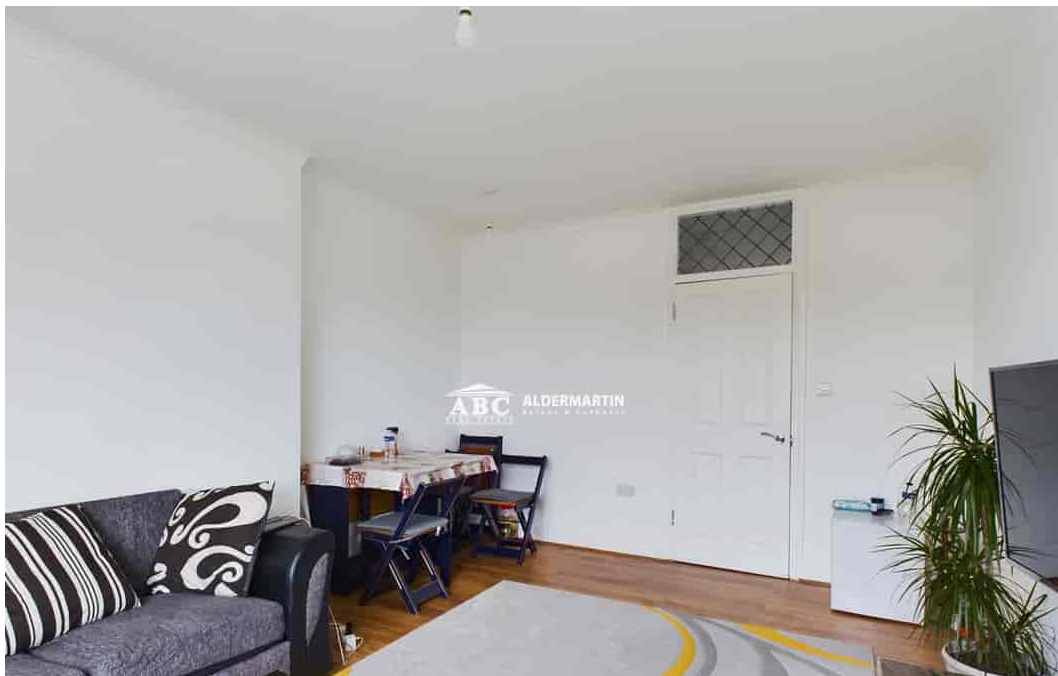




Mountaire Court, Highfield Avenue. NW9 0QA

**£304,950
Leasehold**





- EPC RATING "C" - COUNCIL TAX BAND C
- COMMUNAL GARDENS

- GROUND FLOOR FLAT
- SEPARATE FITTED KITCHEN

- RECENTLY REFURBISHED
- SPACIOUS

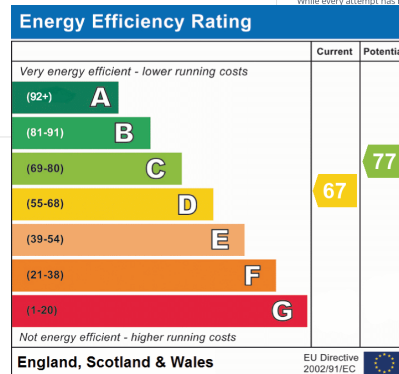
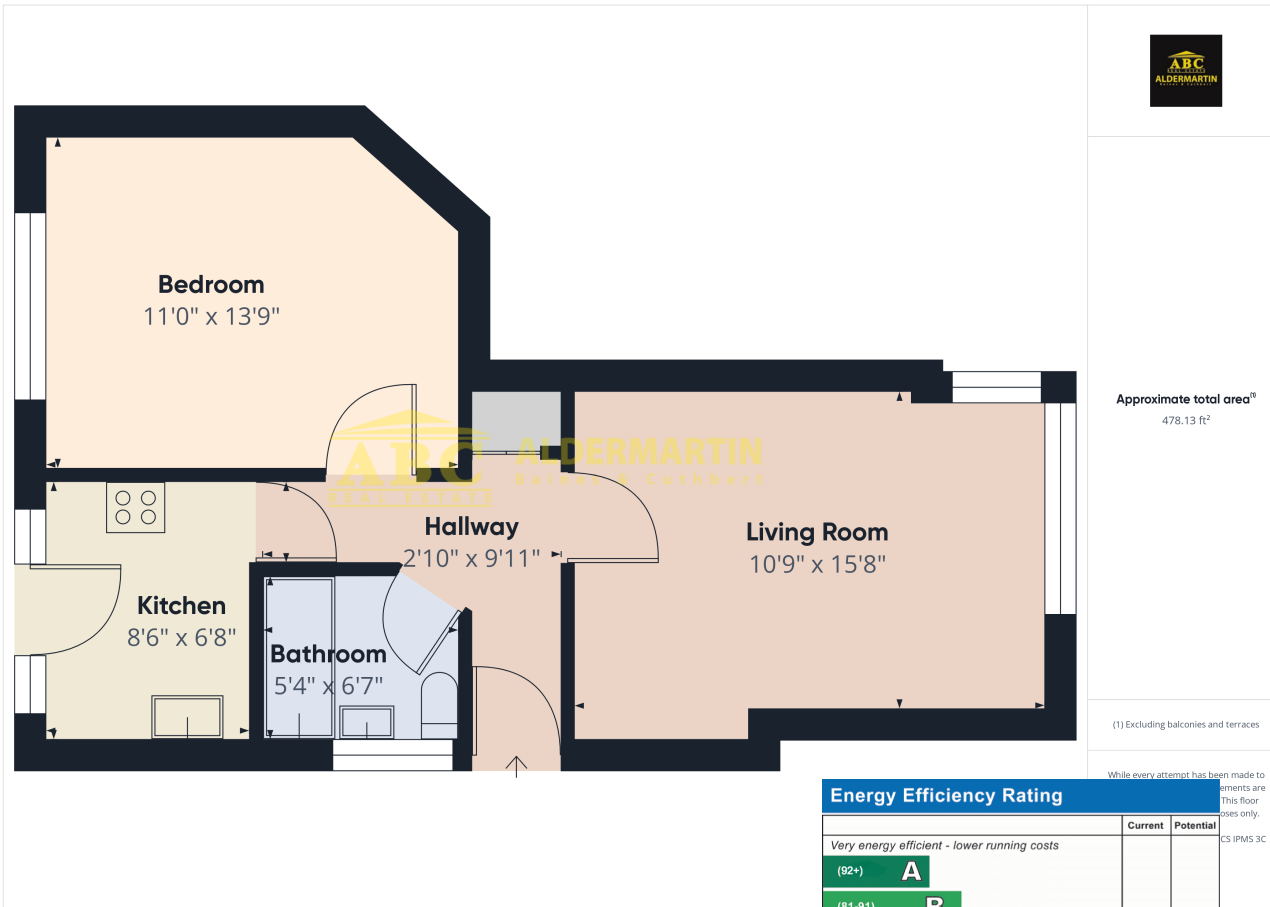
A spacious raised ground floor one bedroom flat in a smart block in Kingsbury.

Features include a large reception room, a separate kitchen and a private garden.

The flat has been recently refurbished and is offered in very decorative order.

Shops, transport links and schools are all close by.

The remaining lease is 145 years. Ground Rent is zero. The service charges range from £200 to £2,500 per year



Edgware
02086 214 000
office@abcestates.co.uk

