



8 Lazare Court Gresham Road, Surrey, STAINES-UPON-THAMES. TW18
3 Bedroom Apartment - £290,000 Share of Freehold

8 Lazare Court Gresham Road, Surrey, STAINES-UPON-THAMES. TW18 2BY.

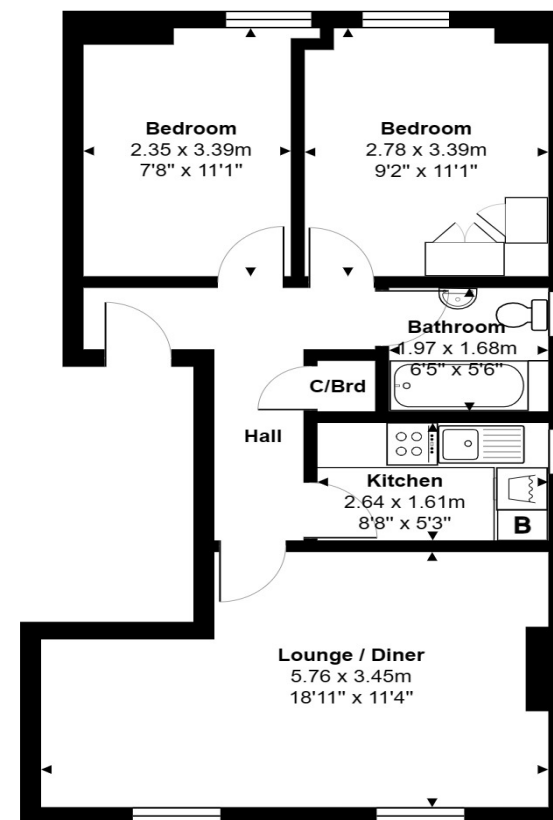
01784 451458

2 Bedroom Apartment - £290,000 Share of Freehold

SHARE OF FREEHOLD | SPACIOUS AND WELL PRESENTED TWO DOUBLE BEDROOM FIRST FLOOR APARTMENT SITUATED IN THIS SOUGHT AFTER CHARACTERFUL BUILDING IDEALLY LOCATED WITHIN MOMENTS OF STAINES TOWN CENTRE & MAINLINE TRAIN STATION. The property benefits from a spacious lounge/diner, separate modern fitted kitchen, two double bedrooms, modern white bathroom suite, residents parking and a share of freehold. No Onward Chain. Viewings Highly Recommended!

Key Features

SHARE OF FREEHOLD
WITHIN MOMENTS OF TOWN CENTRE & MAINLINE TRAIN STATION
EASY ACCESS TO LOCAL MOTORWAY NETWORKS & HEATHROW AIRPORT
OFF-STREET PARKING
MODERN KITCHEN & BATHROOM

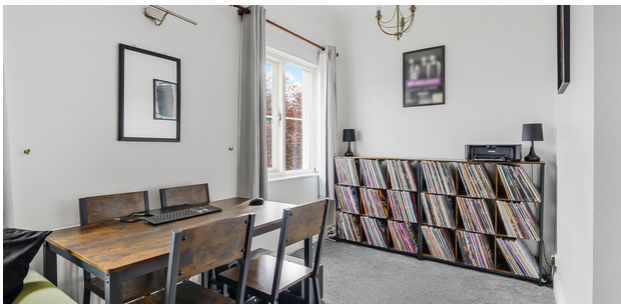


Ground Floor

Total Area: 51.7 m² ... 556 ft²

All measurements are approximate and for display purposes only.

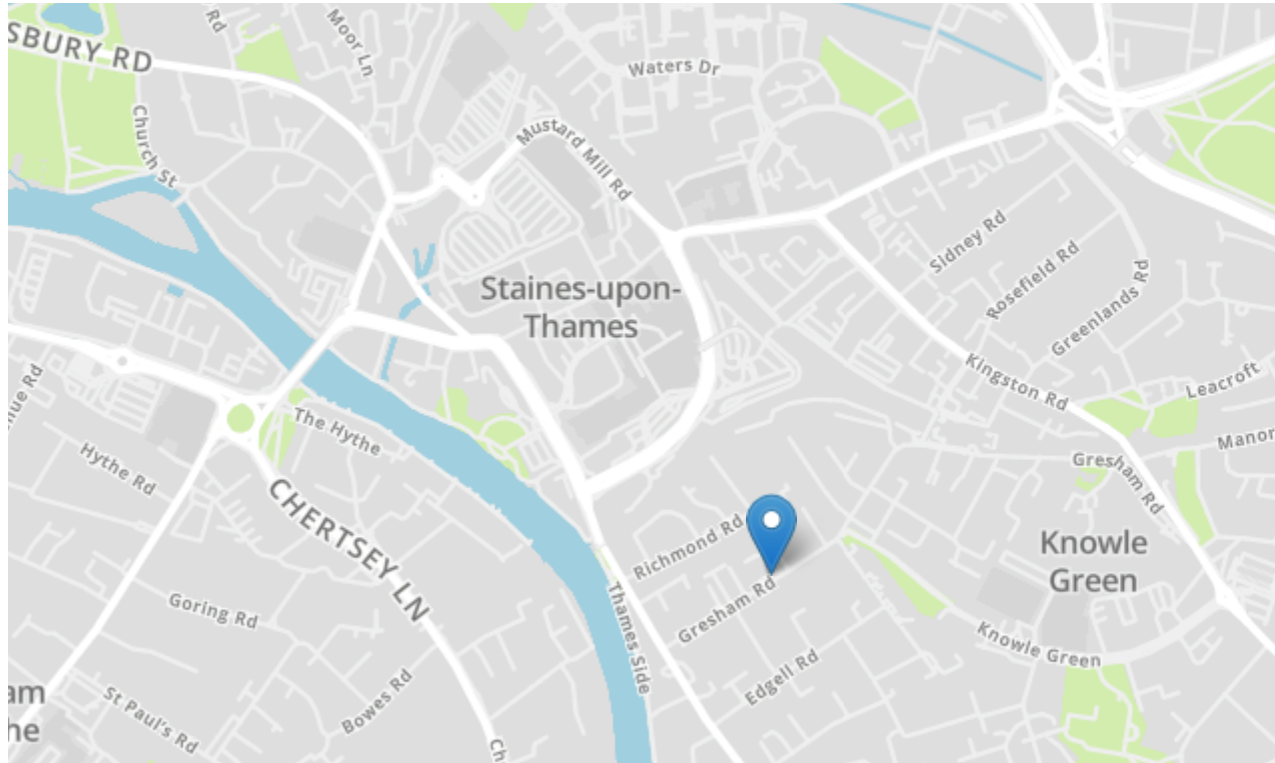






8 Lazare Court Gresham Road, Surrey, STAINES-UPON-THAMES. TW18 2BY.

gregory-brown.co.uk



Tenure	Share of Freehold
Lease Term	To Be Confirmed
Ground Rent	To Be Confirmed
Service Charge	To Be Confirmed
Local Authority	
Council Tax	

We have prepared these property particulars as a general guide to a broad description of the property. They are not intended to constitute part of an offer or contract. We have not carried out a structural survey and the services, appliances and specific fittings have not been tested. All photographs, measurements, floorplans and distances referred to are given as a guide only and should not be relied upon for the purchase of carpets or any other fixtures or fittings. Lease details, service charges and ground rents (where applicable) and council tax are given as a guide only and should be checked and confirmed by your solicitor prior to exchange of contracts. The copyright of all details, photographs and floorplans remain exclusive to Gregory Brown.

