



11 Buie Haugh, Kirkliston, City of Edinburgh, EH29 9FD

Spacious, Four-Bedroom, Detached Family Home, with Gardens, Garage & Driveway

Up to date price and viewing info at [mov8realestate.com/property](https://www.mov8realestate.com/property)



Property Description

Beautifully presented and spacious, four-bedroom, detached family home, with gardens, an integrated double garage with a multivehicle driveway. Located in a quiet and desirable, family-oriented residential development in the village of Kirkliston, lying to the west of Edinburgh City Centre.

Comprises an entrance hall, living room, dining/kitchen, four double bedrooms, two en-suites, a family bathroom and a ground floor WC.

Highlights include a stylish kitchen, modern bathrooms, contemporary flooring and lighting, and an impressive marble fireplace and bay window for the front-facing living room. In addition, there are multiple TV points, double glazing, HIVE gas central heating (new boiler August 2024), and an alarm system and CCTV system.

There is exceptional storage, including the extensive double garage offering flexible workshop space, a loft, and integrated wardrobes for the three main bedrooms. Externally, the property benefits from a professionally landscaped garden, with an extended driveway to the front, and an enclosed non-overlooked rear garden with a lawn and patios.

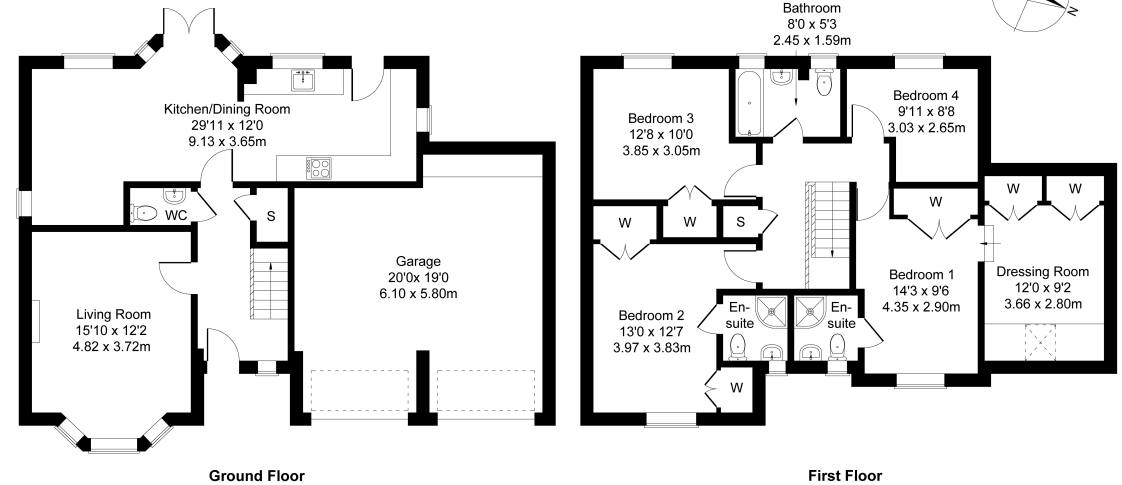
Step into this beautifully presented home through a welcoming hallway, offering convenient access to a handy WC and a generous storage cupboard. To the front of the property, the bright and spacious living room features a charming bay window, plush carpeting, a striking marble fireplace, and a central light fitting—ideal for relaxing or entertaining. The heart of the home lies in the impressive open-plan kitchen and dining area. Designed for both style and functionality, the kitchen boasts modern cabinetry, sleek worktops, a drainer sink with splashback surround, a fan kick plate heater and high-spec integrated appliances including a five-ring gas hob, double oven, and microwave. The adjoining dining area is flooded with natural light and offers seamless indoor-outdoor living with patio doors leading directly into the garden. Wood-effect flooring adds a warm, contemporary touch throughout.

Upstairs, the luxurious master bedroom is a true retreat, complete with carpeting, built-in wardrobes, a wall-mounted TV point, a private en-suite, and a large walk-in dressing area with a Velux-style window and additional built-in storage. Bedroom two also enjoys an en-suite and built-in wardrobes, while bedrooms three and four are equally well-appointed with carpeted floors, with bedroom three also featuring fitted storage and a wall-mounted TV point. The family bathroom is smartly finished with a three-piece suite, a shower over the bath, and tiled splash walls.



11 Buie Haugh, Kirkliston, EH29 9FD

Approximate Gross Internal Area: (1808 sq ft - 168 sq m.)



Legal Disclaimer : Floor-plan and measurements are for illustrative guidance only, and not intended to form part of any contract.

Area Description





Nestled to the west of Edinburgh city centre, Kirkliston is a charming and historic village that combines a tranquil countryside feel with superb modern convenience. Designated as a conservation area, the town is surrounded by open farmland and green spaces, yet continues to grow with a range of stylish residential developments. The village offers a welcoming community atmosphere and a variety of local amenities right on the doorstep, while a Tesco superstore in nearby South Queensferry adds further

shopping convenience. For those who love the outdoors, the area is rich in scenic country parks and walking routes, perfect for family outings or peaceful strolls. Families are well served by reputable primary and secondary schools, while commuters benefit from excellent transport links. Quick access to the M90, A8, M8, and M9, along with regular bus services and a nearby rail station at Dalmeny, make Kirkliston an ideal location for those working in Edinburgh and beyond.





Our Services

-  Free pre-sale property valuations
-  Great value fixed estate agency fees
-  Extensive buyer matching database
-  Purchase and sale conveyancing

Contact Us

0345 646 0208

sales@mov8realestate.com

www.mov8.com

Head Office

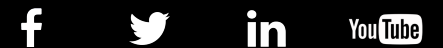
6 Redheughs Rigg, Edinburgh, EH12 9DQ

Glasgow Office

77 Renfrew Street, Glasgow, G2 3BZ



Estate Agents and Solicitors



These particulars do not form part of any contract and the statements or plans contained herein are not warranted nor are they to scale. All descriptions, dimensions, areas, reference to condition and necessary permissions for use and occupation and other details are given in good faith, and are believed to be correct, but any prospective purchaser should not rely on them as statements or representations of fact, and any prospective purchaser must satisfy themselves by inspection or otherwise as to the correctness of each of them. The Seller shall not be bound to accept the highest or any offer nor to accept a full offer of the Fixed Price where this is applicable. Approximate measurements have been taken by sonic device and measurements are most often taken to the widest point of any room or space. Services and appliances have not been tested for efficiency or safety and no warranty is given as to their compliance with any Regulations. Offers should be made using the Combined Standard Clauses.