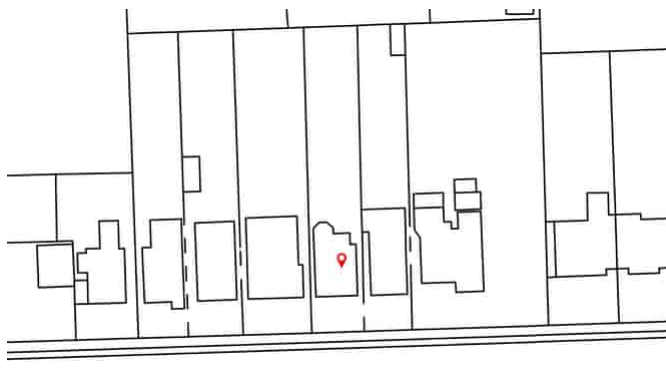


Claremont Road,

Bickley, Kent. BR1 2JL

Tenure: Freehold

5 Bedrooms | 2 Reception Rooms | 3 Bathrooms



An attractive period home, ideally positioned on a sought-after tree-lined road 0.25 miles from Bickley station. This beautifully enhanced house blends original character with contemporary style. The ground floor offers an elegant reception room plus a second reception flowing into a stunning, light filled, oak-framed extension overlooking a secluded garden with decking area and pool. Five generous double bedrooms are arranged over two floors. Off-street parking completes the home. EPC Rating; D

Enquiries To:

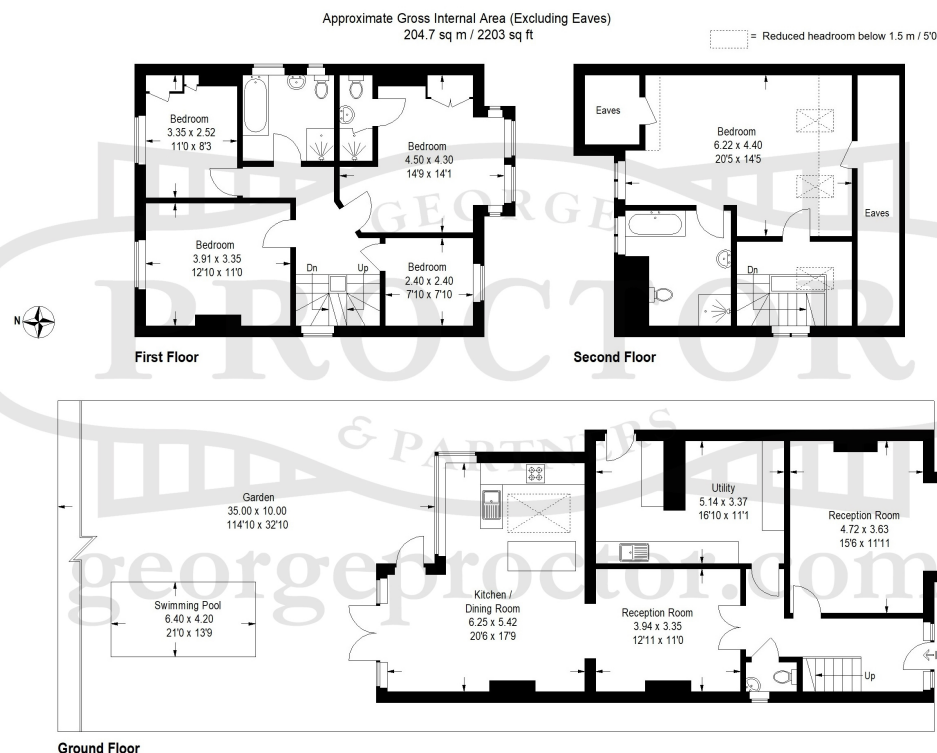
T: 020 8467 2252

E: beosales@georgeproctor.com



The Bickley Estate Office

Southborough Road, Bickley, Kent, BR1 2EB



These particulars whilst believed to be accurate are made without responsibility on the part of the vendor or agents, their accuracy is not guaranteed nor do they form part of any contract and no warranty is given. Services or appliances have not been tested and no guarantee can be given as to their operation, buyers should seek professional advice where necessary. All measurements are approximate and may be rounded to the nearest three inches (10 cm). Floor plans, where shown, are indicative only. Any photographs included may be taken with the use of a wide angle lens. If there is a matter of particular interest please contact us for further information, especially before travelling any distance to view. Map reproduced by permission of Geographers A-Z Map Co Ltd. Licence No. A0514. This map is based upon Ordnance Survey maps with the permission of the controller of Her Majesty's Stationary Office.