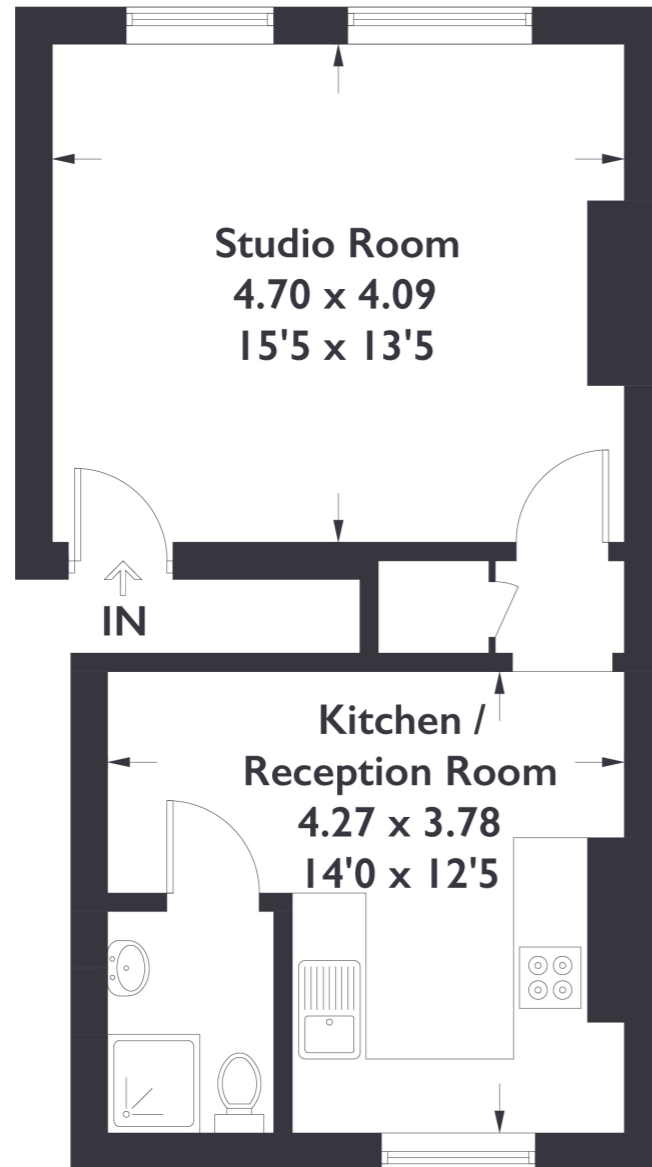


Chiswick High Road, W4

Approximate Gross Internal Area = 37.9 sq m / 409 sq ft



First Floor

Measured in accordance with RICS Code of Measuring Practice. To be used for identification and guidance purposes only. Whilst every care is taken in the preparation of this plan, please check all dimensions, shapes and compass bearings before making any decisions reliant upon them. www.london58.com © 2023 hello@london58.com



STUDIO FLAT

Chiswick High Road, W4
£325,000

Experience contemporary living at its finest in this one-bedroom modern flat, nestled in the heart of Chiswick on the vibrant Chiswick High Road. The trendy neighbourhood has a plethora of restaurants, coffee shops, and shopping delights.

FEATURES

- Leasehold
- Studio
- Kitchen/Dining Area
- On-Street Parking
- Chiswick High Road
- Turnham Green Station
- EPC Rating C

STUDIO FLAT

Chiswick High Road, W4

£325,000

The well-designed space features a spacious kitchen, perfect for culinary enthusiasts, and a sleek bathroom for added convenience.

Abundant natural light streams through large windows, creating a warm and welcoming ambiance throughout. With its prime location, an array of restaurants and amenities are just a stone's throw away, offering endless dining and entertainment options at your fingertips.

Enjoy easy commuting with Turnham Green Station on the District Line, a mere 5-minute stroll away, connecting you effortlessly to the rest of London. Embrace a perfect blend of style, comfort, and convenience in this fantastic urban retreat. EPC Rating C.

