



**5 Barrington Court, Thames Side, Staines-upon-Thames, Surrey. TW18 2HB.**  
**1 Bedroom Apartment - £225,000 OIEO Share of Freehold**

# 5 Barrington Court, Thames Side, Staines-upon-Thames, Surrey. TW18 2HB.

01784 451458

## 1 Bedroom Apartment - £225,000 OIEO Share of Freehold

**SHARE OF FREEHOLD | OFFERING STUNNING RIVERSIDE VIEWS IS THIS SPACIOUS ONE BEDROOM APARTMENT LOCATED IN THIS MUCH SOUGHT AFTER DEVELOPMENT IDEALLY POSITIONED FOR EASY ACCESS TO BOTH STAINES TOWN CENTRE & MAINLINE TRAIN STATION. In need of updating throughout the property benefits from a spacious riverside lounge/diner, separate fitted kitchen, large double bedroom, bathroom and garage. No Onward Chain. Viewings Highly Recommended!**

### Key Features

**SHARE OF FREEHOLD  
NO ONWARD CHAIN  
IN NEED OF UPDATING  
STUNNING RIVERSIDE VIEWS  
SOUGHT AFTER DEVELOPMENT CLOSE TO TOWN CENTRE**

## Barrington Court, Thames Side Staines Upon Thames TW18 2HB

Approximate Gross Internal Area = 50.07 sq m / 539 sq ft

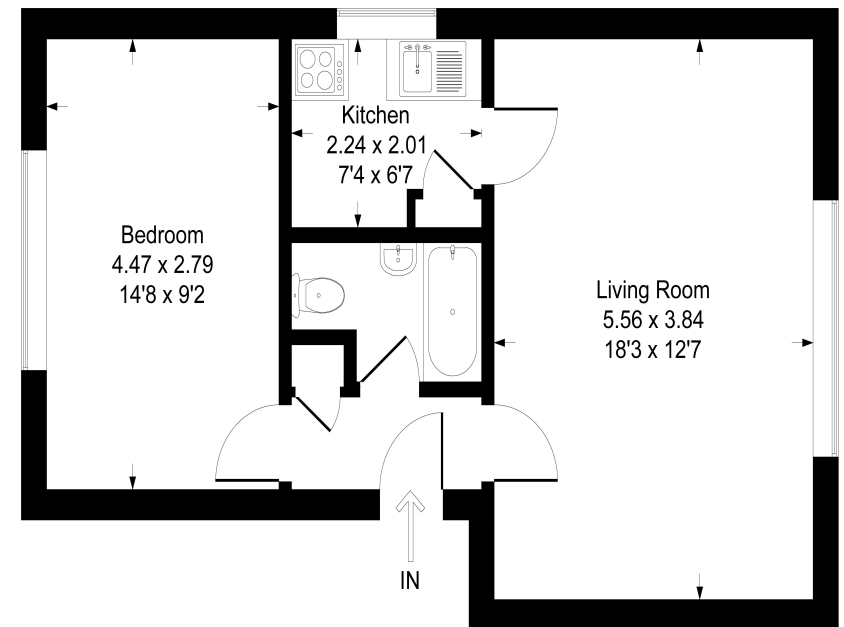


Illustration for identification purpose only, measurements approximate, and not to scale.

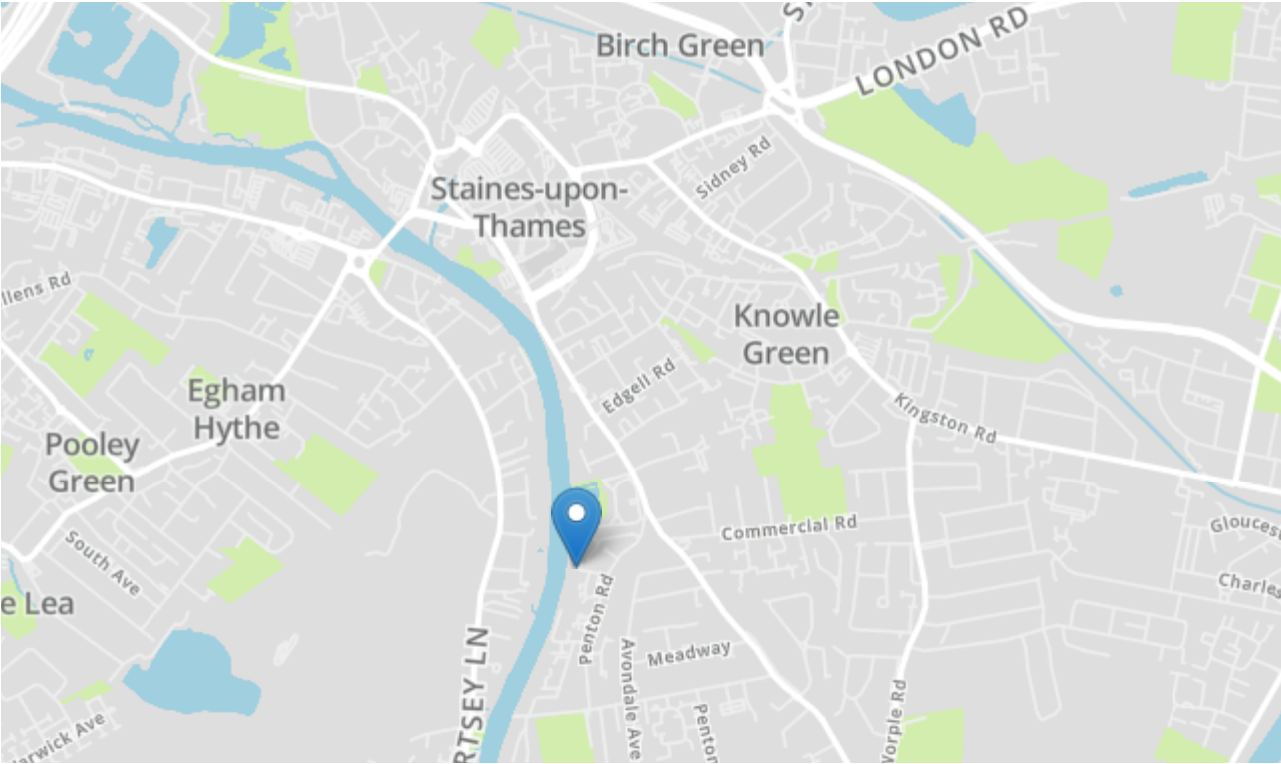


**GREGORY BROWN**  
RESIDENTIAL SALES & LETTINGS



5 Barrington Court, Thames Side, Staines-upon-Thames, Surrey. TW18 2HB.

gregory-brown.co.uk



Tenure	Share of Freehold
Lease Term	To Be Confirmed
Ground Rent	To Be Confirmed
Service Charge	To Be Confirmed
Local Authority	
Council Tax	

We have prepared these property particulars as a general guide to a broad description of the property. They are not intended to constitute part of an offer or contract. We have not carried out a structural survey and the services, appliances and specific fittings have not been tested. All photographs, measurements, floorplans and distances referred to are given as a guide only and should not be relied upon for the purchase of carpets or any other fixtures or fittings. Lease details, service charges and ground rents (where applicable) and council tax are given as a guide only and should be checked and confirmed by your solicitor prior to exchange of contracts. The copyright of all details, photographs and floorplans remain exclusive to Gregory Brown.

