

**2 Bedroom(s), Semi-Detached Bungalow, Freehold**

**Hindburn Close, Bessacarr.**



- 3D Virtual Tour Available
- No Onward Chain
- Lounge
- Electric Car Charger Point
- Spacious Driveway Allowing Multiple Cars to Park

- Two Bedroom Semi-Detached Bungalow
- Modern Kitchen with Integrated Appliances
- Updated Family Bathroom Suite
- Rear Garden and Garage
- Popular Location with Amenities in Walking Distance

**£200,000**  
**For Sale**

*Book your viewing today* Tel: 01302 247754



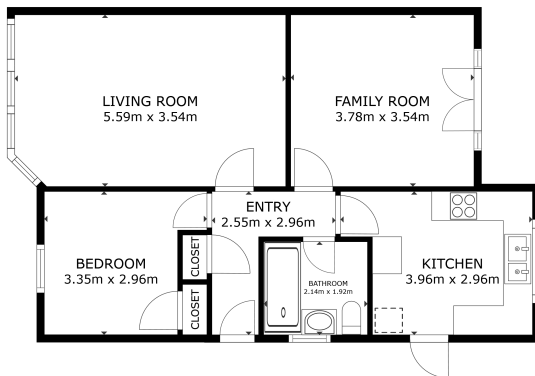
## Owner's View

3D Virtual Tour Available- Take a closer, more detailed look around via our 3D Virtual Tour! Don't forget that you can also check availability for viewings online via a visit to our website...

Well presented throughout is this two bedroom semi detached bungalow. The bungalow has been maintained to a high standard throughout and is ready for moving straight into. The bungalow is positioned on a quiet and friendly cul de sac, the white path which runs through the Bessacarr area is extremely close and is a short walk to an array of local shops, there is a good bus service close by also.

## Internals

### Floor Plan



FLOOR PLAN

GROSS INTERNAL AREA  
FLOOR PLAN IN SQUARE METERS  
TOTAL: 64.0 sq.m.

Matterport

### Lounge



### Kitchen





Master Bedroom



Bedroom





## Family Bathroom



## Externals

### Front Aspect



### Rear Garden



## Property Information

Council Tax Band - B

Utilities - Mains Gas, Mains Electricity, Mains Water

Water Meter - Yes

Tenure - Freehold

Solar Panels - Yes, There is a lease agreement with a third party

Space Heating System - Gas Boiler with radiators

Approximate Heating System Installation Date -

Water Heating System - Gas boiler (Combi)

Approximate Water Heating Installation Date -

Boiler Location - In the loft





Approximate Electrical System Installation Date -

Permanent Loft Ladder - Yes

Loft Insulation - Yes

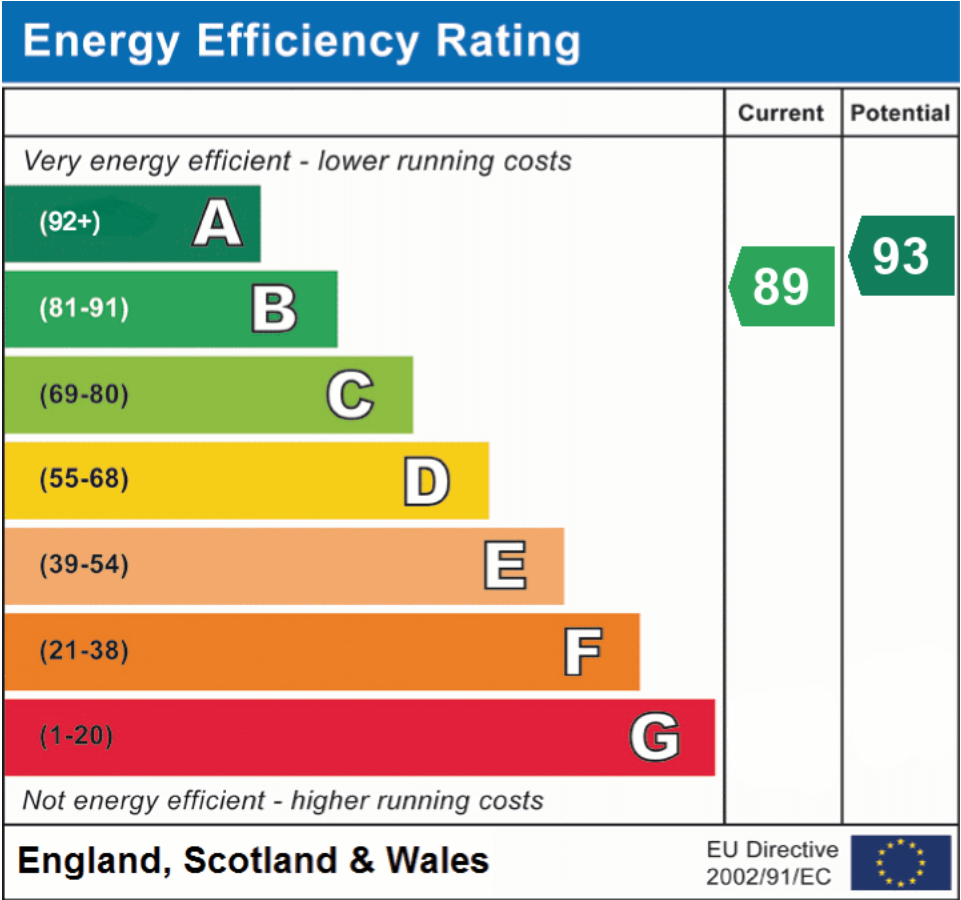
Loft Boarded out – Partially

Accessibility - Step-free access from the street to the inside the property (this can include ramps/lifts)

Whilst every effort is made to ensure that the information contained in these particulars is reliable, they do not constitute or form part of an offer or any contract. The Property Hive accept no liability for the accuracy of the contents, and therefore they should be independently verified by prospective buyers or tenants before agreeing an offer. All measurements provided are approximate and should be verified before exchange of contracts. No appliances, fixtures or fittings have been tested and should be checked by the buyer before exchange of contracts to ensure they are in good working order.



## Energy Performance Certificate



All measurements provided are approximate and should be verified before exchange of contracts. No appliances have been tested and should be checked to ensure they are in good working order.