

# HOUND & PORTER

FIND A HOUSE . MAKE IT HOME





**Saxley Hill Barn, Meath Green, Surrey**



## Saxley Hill Barn, Meath Green, Surrey

- Converted barn dating back to the 17th Century
- Six double bedrooms, master with decadent ensuite
- Fabulous rural setting with far reaching views
- Approximately three acres of land
- State of the art air source heat pump
- Luxury family bathroom and three en-suites
- Double barn garage with room above





## Saxley Hill Barn



### DESCRIPTION

A quintessentially English, extensively converted barn, originally dating back the 17th century, rarely available for the first time in over 60 years. This fabulous home has been beautifully renovated to the very highest of standards including a state of the art, air source heat pump. Designed by the renowned “Arts and Crafts” architect “Blunden Shadbolt” and converted by the local builders “Mitchells”, this unique property has an abundance of history, allegedly the parquet flooring came from No10 Downing Street! This unique home offers incredibly flexible accommodation, over three floors, to include a completely self-contained apartment. There is a wonderful reception hall with original flagstone flooring, a drawing room with an Inglenook fireplace, living room, with open fire and far-reaching views over the grounds.



Saxley Hill Barn

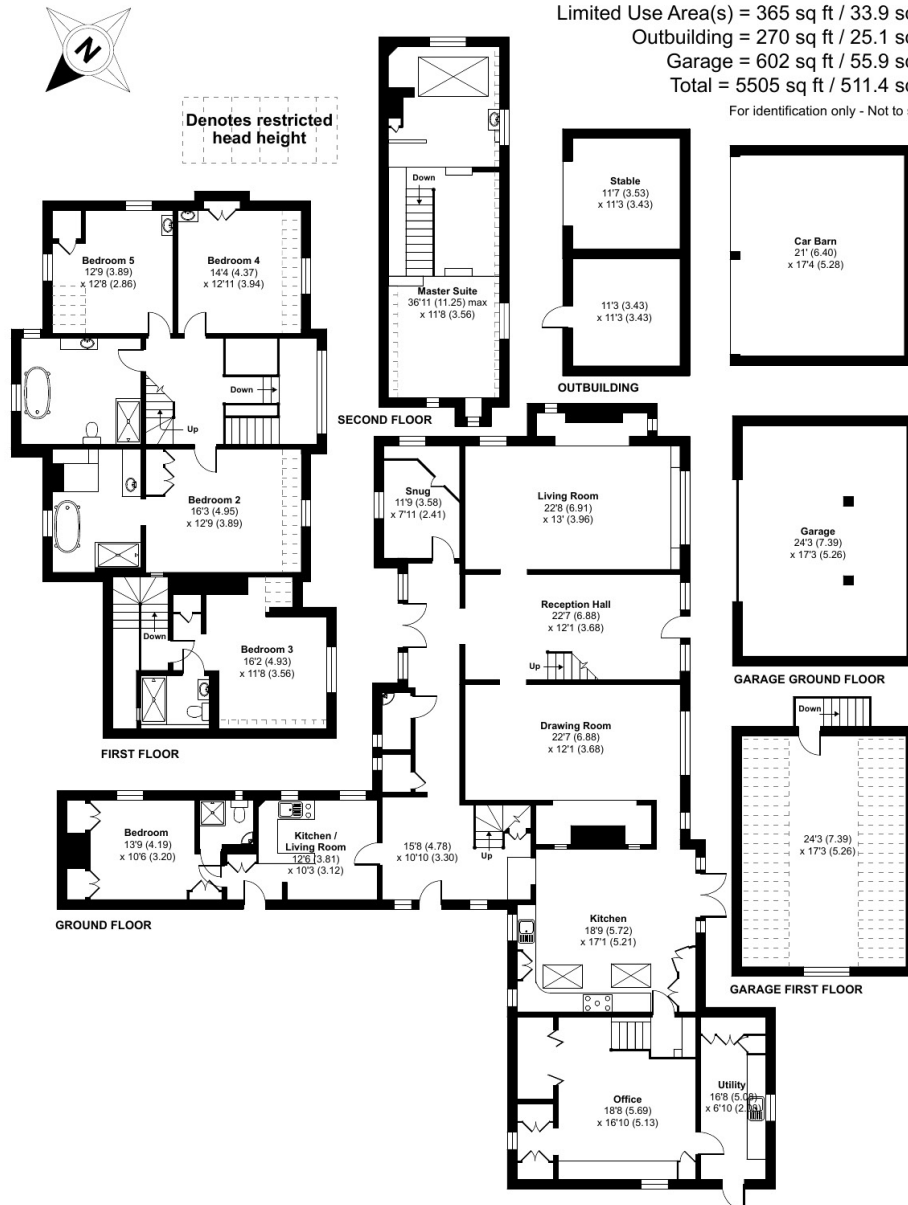




## Saxley Hill Barn, Meath Green Lane, Horley, RH6

Approximate Area = 4268 sq ft / 396.5 sq m  
 Limited Use Area(s) = 365 sq ft / 33.9 sq m  
 Outbuilding = 270 sq ft / 25.1 sq m  
 Garage = 602 sq ft / 55.9 sq m  
 Total = 5505 sq ft / 511.4 sq m

For identification only - Not to scale

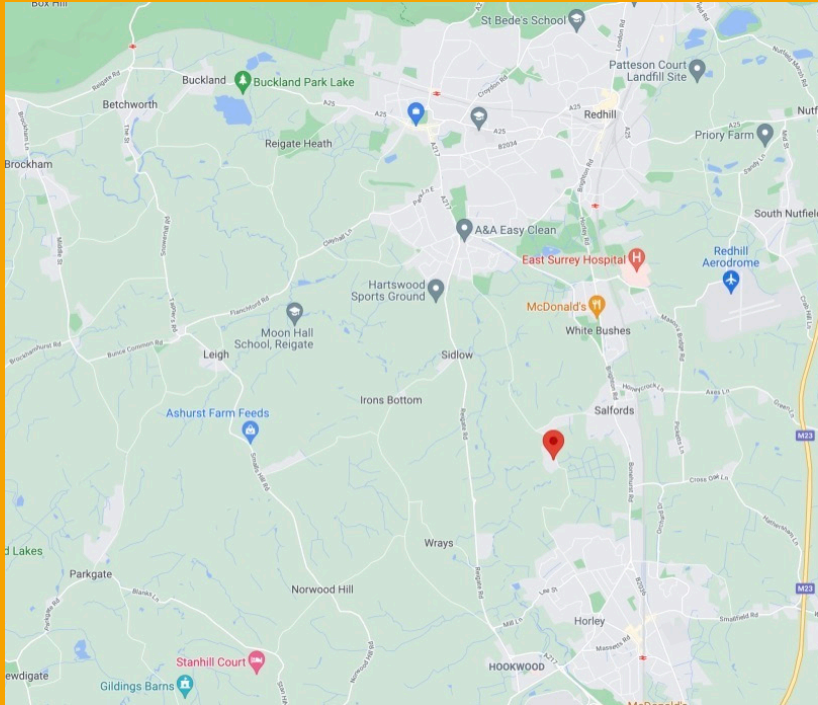


A Shaker style kitchen has ample worksurface, range cooker, central monolith island and French doors to the ornamental grounds. A professionally designed, and built, home office, large utility room and snug complete the main downstairs accommodation. Arranged over the two upper floors are five bedrooms, the master suite occupying the top floor, four further bedrooms, three with ensuite and a beautiful family bathroom.

Take a stroll around the 3.25 acre grounds (approx), that includes a paddock with stables, and take in the breath-taking countryside with far reaching views. A more formal ornamental patio offers the perfect space to entertain on a sunny summers evening. A large garage with room above, and double car barn are ideal for the car enthusiast, with a gated private drive for numerous cars. To truly understand the quality of this splendid home, please take a peek at our video.



## Saxley Hill Barn



### LOCATION

This lovely home is just South of Reigate, close to many areas of natural beauty, Saxley Hill Barn is in a semi-rural location, surrounded by local farmland and with distant views over breath taking countryside. Reigate town with its charming boutique shops and local restaurants, supported by a M & S and Morrisons supermarket, is just over three miles away. Towns of Horley and Redhill are five to ten miles away with each location providing rail stations connecting to various London stations. The area has a fine selection of schools at both primary and secondary levels in state and private sectors including primary schools in Horley, Reigate and Redhill as well as grammar schools in Reigate and Tunbridge Wells.

### TRANSPORT

Within easy reach of the, A25, M23, M25 and Gatwick Airport

- 1.7 miles to Salfords Station
- 3.1 miles to Earlswood Station



### DID YOU LIKE WHAT YOU'VE JUST SEEN?

Get in touch. We are more than happy to arrange a viewing, assist you with the complicated paperwork and find you the best local businesses to help during and after your move. We look forward to hearing from you.

58 Castle Walk  
Reigate, Surrey  
RH2 9PX

01737 317880  
hello@houndandporter.co.uk



GET IN TOUCH WITH US TO DISCUSS THE NEXT STEPS

+44 1737 317 880

hello@houndandporter.co.uk

www.houndandporter.co.uk

H O U N D  P O R T E R

FIND A HOUSE . MAKE IT HOME