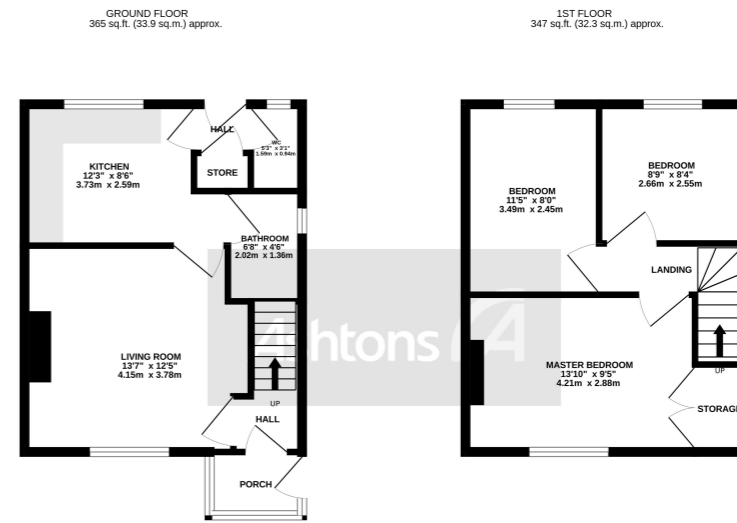


Plumtre Avenue, Warrington, WA5 £130,000



TOTAL FLOOR AREA: 712 sq. ft. (66.1 sq. m.) approx.

While every attempt has been made to ensure the accuracy of the floorplans contained herein, measurements of floor, window, doors and any other items are approximate and no responsibility is taken for any error, omission or mis-statement. This plan is for illustrative purposes only and should be used as such by any prospective purchaser. The services, systems and equipment shown have not been tested and no guarantee as to their operability or efficiency can be given. Made with Metreplan (C)2013



Fantastic Opportunity! Charming Three-Bedroom Semi-Detached Home in Bewsey, Warrington Are you ready to unlock the potential of your dream home? Look no further! We are thrilled to present this incredible three-bedroom semi-detached property nestled on a generous corner plot in the highly sought-after neighborhood of Bewsey, Warrington.

 x 3  x 1

See more of this house at [ashtons.net](https://www.ashtons.net)

