

128 Manor Road, Guildford, Surrey. GU2 9NR

- No Onward Chain
- Two Bedrooms
- Updating Required
- Two Reception Rooms
- Gas Central Heating
- Double Glazed
- Delightful Garden
- Convenient Location
- Must Be Seen
- Kitchen Breakfast Room



PROPERTY DESCRIPTION

This conveniently located semi detached home comes to the market offering a buyer the opportunity to update and stamp their mark. The ground floor benefits from two separate reception rooms and kitchen/Breakfast room whilst the first floor boasts two bedrooms and bathroom. Further benefits include gas central heating, double glazing and a delightful enclosed rear garden. Local amenities are nearby as are bus routes but to fully appreciate the accommodation and potential viewings are highly recommended. No Onward Chain.



ROOM DESCRIPTIONS

Ground Floor

Front Room

Front aspect double glazed window, radiator

Dining Room

Rear aspect double glazed window, storage cupboard, radiator

Kitchen/Breakfast Room

Side aspect double glazed windows and door, range of units, space for appliances, breakfast bar, wall mounted boiler

First Floor

Landing

Loft access, doors to:

Bedroom

Front aspect double glazed window, radiator

Bedroom

Rear aspect double glazed window, radiator, airing cupboard

Bathroom

Double glazed window, panel enclosed bath, low level w.c, wash hand basin

Outside

Rear Garden

Paved with the remainder laid to lawn, access to Summer House

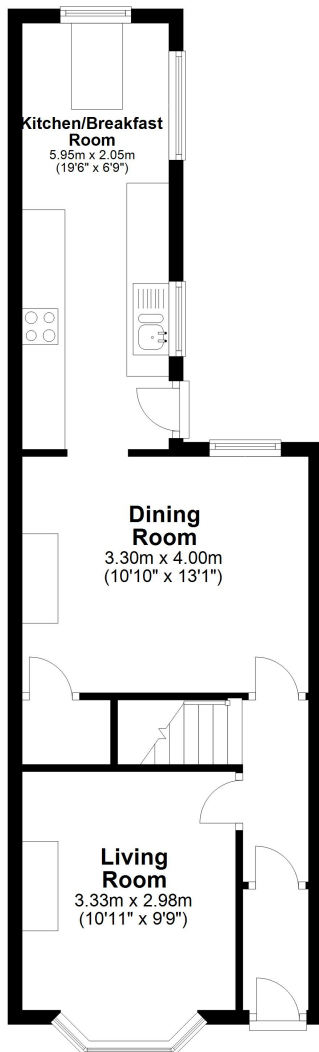


FLOORPLAN



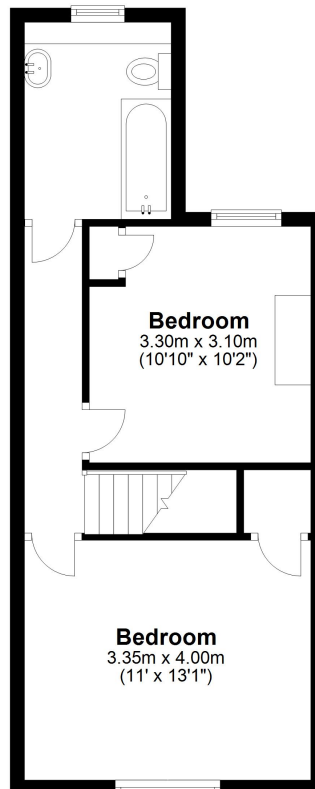
Ground Floor

Approx. 43.5 sq. metres (468.7 sq. feet)



First Floor

Approx. 36.8 sq. metres (395.6 sq. feet)



Total area: approx. 80.3 sq. metres (864.3 sq. feet)