



**Tewkesbury**

**01684 293246**





## 5 Trinity Street, Tewkesbury, GL20 5LH

This beautifully light and spacious town centre cottage is full of character and charm.

A welcoming entrance porch greets as you enter the cottage and leads through to the lounge which has beams and deep alcoves adding to its character and interest.

A door from the lounge leads through to the kitchen/dining room, with the dining area at the front benefitting from an attractive ornamental fire surround.

The kitchen itself is fitted with a range of modern shaker style wall and base units with an integrated fridge and space and plumbing for a dishwasher.

Off the kitchen is a useful utility room, again fitted with wall and base units and with space and plumbing for a washing machine and tumble drier. A door from here leads into the rear garden.

Completing the accommodation on the ground floor is a downstairs wc.



On the first floor there are 3 good sized bedrooms with the main bedroom benefitting from fitted wardrobes. The family bathroom is fitted with separate walk in shower cubicle, panel bath, pedestal wash basin and low level wc.

The property has the benefit of gas central heating with a combination gas boiler and double glazed timber framed windows to the front.

Outside there is a pretty cottage style front garden with driveway parking and gated side access to the rear. The rear walled courtyard garden is quiet and private with space to add a garden shed/home office if required.

Located within the heart of the town centre with all the amenities it has to offer within easy walking distance, including the Roses Theatre, a new medical centre and hospital, leisure centres, sports facilities, shops and eateries.

Tewkesbury itself is centrally located between Cheltenham, Gloucester and Worcester with J9 M5 and Aschurch Rail Station within 2 miles of the property providing excellent commuter links.

### Ground floor

Porch 4'10"x3'11"  
 Lounge 17'07"x15'01" max  
 Kitchen/Dining Room 18'07" x10'7" max 9'7" min  
 Utility area 7'09"x5'05"  
 Downstairs wc 5'05"x2'10"

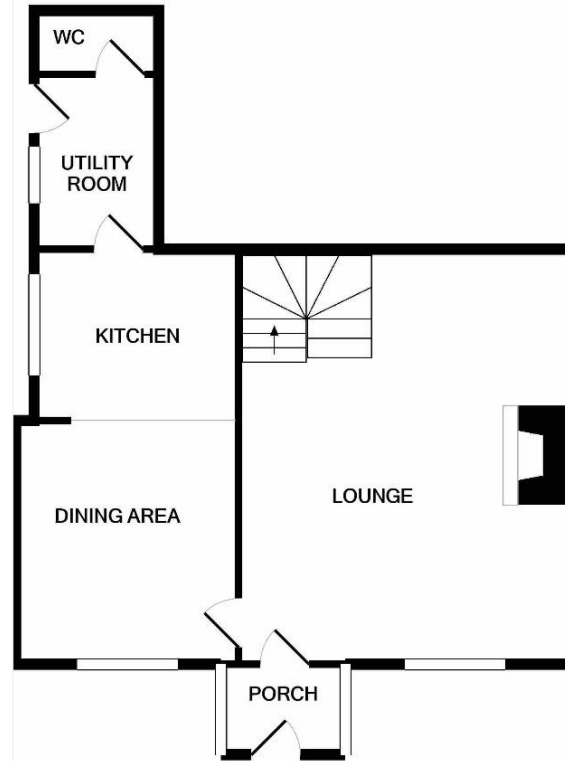
### First Floor

Master Bedroom 8'10"x14'08"  
 Bedroom 2 10'06"x9'09"  
 Bedroom 3 8'07"x8'09"  
 Bathroom

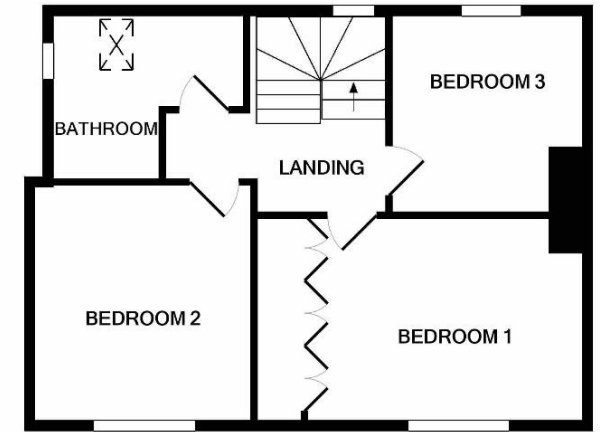
### Outside

Walled courtyard rear garden  
 Cottage front garden  
 Driveway parking  
 Gas central heating  
 Double glazing

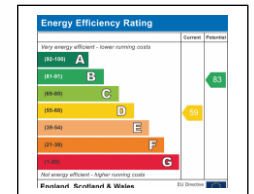
**Tewkesbury Borough Council Tax Band C**



GROUND FLOOR



1ST FLOOR



This floorplan is provided for guidance only as an approximate layout of the property and should not be relied upon as a statement of fact.



**Guide Price £335,000**

Viewing strictly by arrangement with Engall Castle Ltd  
 155 High Street Tewkesbury Gloucestershire GL20 5JP  
 Office hours: Mon – Fri 9am to 6pm, Sat 9am to 4pm  
 email: [sales@engallcastle.com](mailto:sales@engallcastle.com)

**01684 293 246**  
[www.engallcastle.com](http://www.engallcastle.com)



### Agents Note

These property details are set out as a general outline only and do not constitute any part of an Offer or Contract. Any services equipment, fittings or central heating systems have not been tested and no warranty is given or implied by Engall Castle Ltd that these are in working order. Buyers are advised to obtain verification from their solicitor or surveyor. Fixtures and fittings or other items are not included unless specifically described. All measurements, distances and areas are approximate and for guidance only and should not be relied upon for the purposes of fitting carpets or furniture etc. These property details and all statements within this document are provided without responsibility on behalf of Engall Castle Ltd or its employees or representatives and should not be relied on as statements of fact. Prospective purchasers must satisfy themselves as to the accuracy of all details pertaining to the property.



