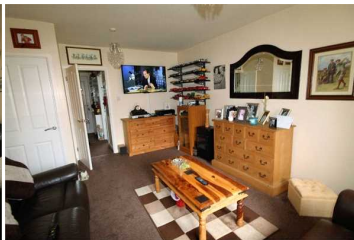


2 Middle Row
Old Town
Stevenage
Hertfordshire
SG1 3AN

Tel: 01438 367753
Fax: 01438 368531
Email: sales@own-homes.com
Web: www.own-homes.com



Bradman Way, STEVENAGE

£260,000

Own Homes welcome to the market this two bedroom end of terrace property situated within the Pin Green area of Stevenage. The accommodation comprises of entrance hall, lounge/diner, fitted kitchen, two bedrooms, bathroom, rear garden. The property benefits from a refitted kitchen and bathroom. Own Homes feel internal viewing is a must.

- 2 Bed End of terrace
- Refitted Kitchen
- Refitted Bathroom
- Garden

Ground Floor

Entrance Hall

Door to front aspect, stairs to first floor

Kitchen

8' 11" x 5' 10" (2.72m x 1.78m) Fitted kitchen with a range of wall and base units, High gloss units, double glazed window to front aspect, roll edge work surfaces, integrated oven and hob with stainless steel oven and gas hob with stainless steel cooker hood over, plumbing for washing machine, one and half bowl sink drainer, tiled splash back

Lounge/Diner

16' 11" x 12' 3" (5.16m x 3.73m) Double glazed patio doors leading out to rear garden, under stairs storage

First Floor

Landing

Loft access, doors to:

Bedroom

12' 3" x 10' 6" (3.73m x 3.20m) Double glazed window to rear aspect

Bedroom Two

12' 4" x 8' 1" (3.76m x 2.46m) Double glazed window to front aspect, door to airing cupboard

Bathroom

Double glazed window to , low level wc, wash hand basin with incorporated cupboards underneath, panelled enclosed bath

Exterior

Front Garden

Path to front

Rear Garden

Enclosed rear garden, laid to lawn, garden shed

