



Manor Crescent

Hitchin,
Hertfordshire, SG4 9NA
Guide Price £495,000

COUNTRY PROPERTIES
PART OF HUNTERS

A two bedroom semi-detached bungalow, close to popular schools and within easy access of the station and motorway links.

The property is well presented throughout with a modern kitchen with a separate dining room and also a living area. There are two double bedrooms and a modern family bathroom with a walk in shower.

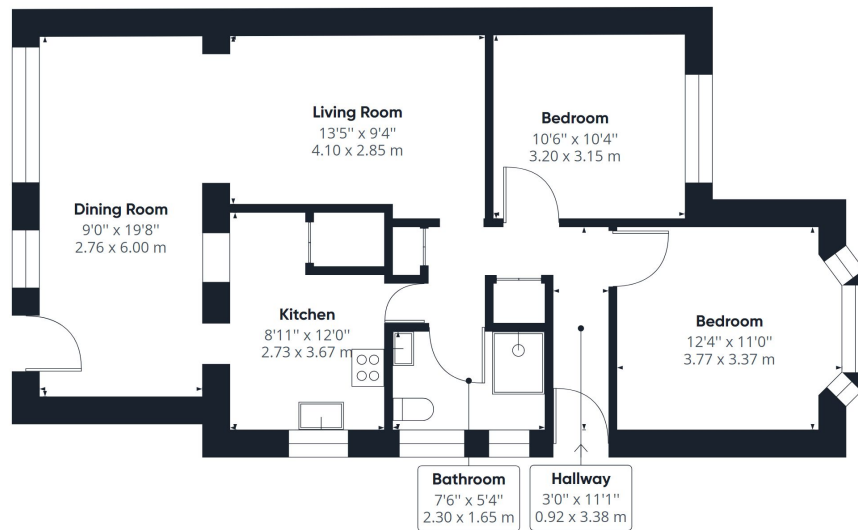
To the front of the property there is ample parking for three or more cars and a single detached garage. To the rear of the property offers a paved patio area and a split level garden housing a home office with power and en-suite and a further decked seating area.

Hitchin is a charming medieval market town and has many fine Tudor and Georgian buildings, particularly around the market square. Near to the market square stands the large medieval parish church of St Mary. The town provides good shopping as well as a swimming pool, football team, two theatres, a wide variety of restaurants and pubs and highly regarded girls and boys schools. There is also a mainline railway station providing direct access to Kings Cross and Cambridge.

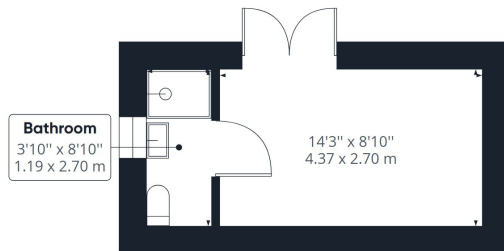
- A two bedroom semi-detached bungalow
- Spacious living and dining areas
- Two double bedrooms
- Family bathroom with walk in shower
- Enclosed split level rear garden with home office
- Garage and ample off road parking
- 1.0 miles, 19 mins walk to Hitchin train station (as per Google maps)
- 0.9 mile, 17 mins walk to Hitchin town centre (as per Google maps)
- Chain free



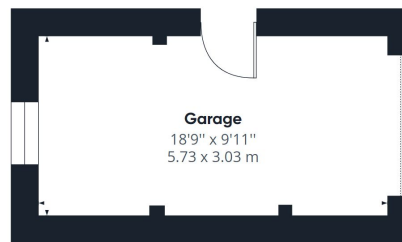




Floor 0 Building 1



Floor 0 Building 2



Floor 0 Building 3

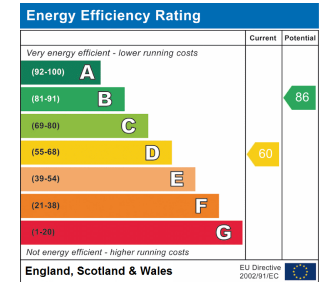
Approximate total area⁽¹⁾

1152.75 ft²
107.09 m²

(1) Excluding balconies and terraces

While every attempt has been made to ensure accuracy, all measurements are approximate, not to scale. This floor plan is for illustrative purposes only.

GIRAFFE360



All measurements are approximate and quoted in metric with imperial equivalents and for general guidance only and whilst every attempt has been made to ensure accuracy, they must not be relied on. The fixtures, fittings and appliances referred to have not been tested and therefore no guarantee can be given and that they are in working order. Internal photographs are reproduced for general information and it must not be inferred that any item shown is included with the property. For a free valuation, contact the numbers listed on the brochure.

Viewing by appointment only

Country Properties | 6, Brand Street | SG5 1HX

T: 01462 452951 | E: hitchin@country-properties.co.uk

www.country-properties.co.uk

