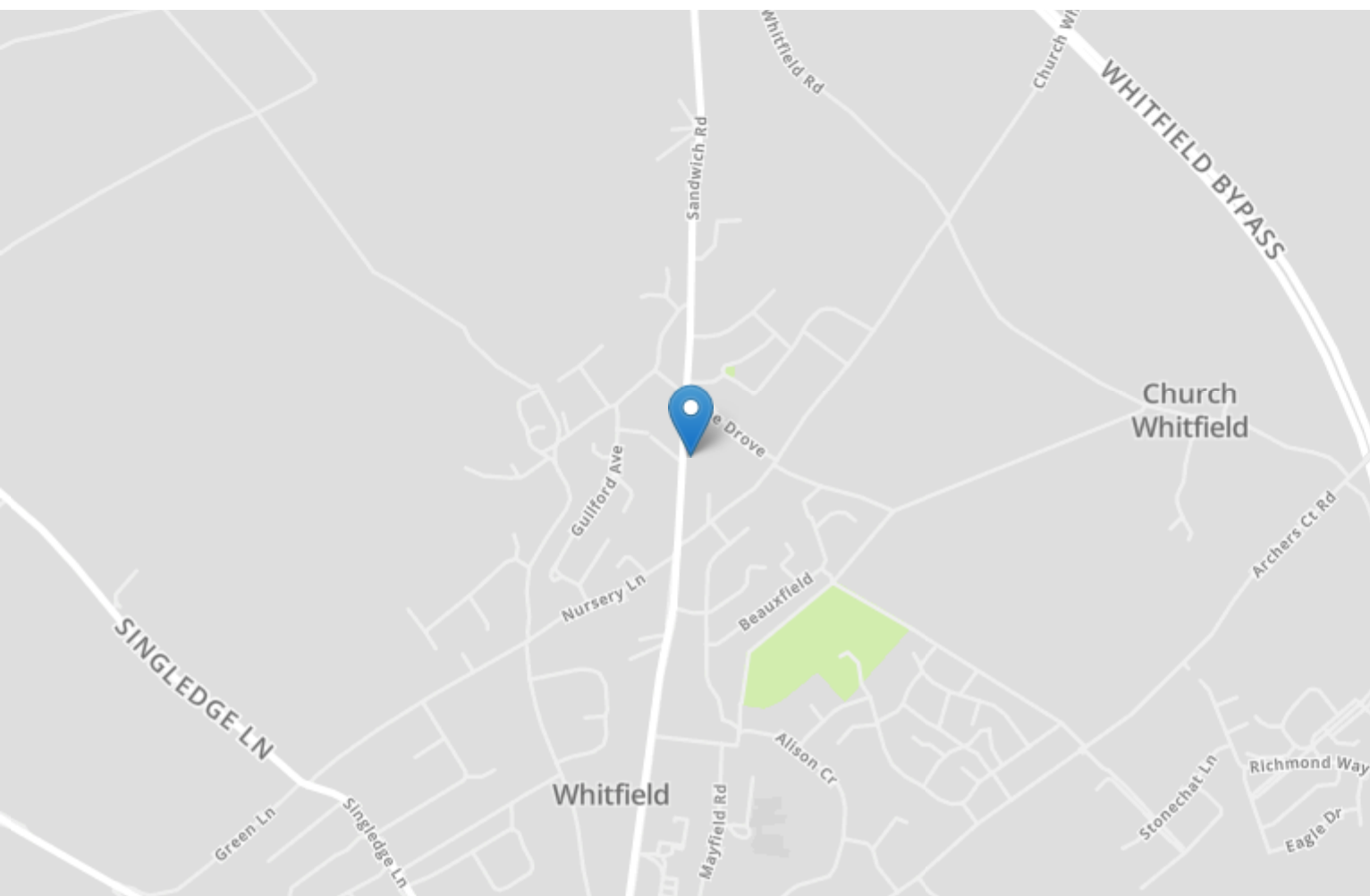


Energy Efficiency Rating		
	Current	Potential
<i>Very energy efficient - lower running costs</i>		
(92+) A		94
(81-91) B	84	
(69-80) C		
(55-68) D		
(39-54) E		
(21-38) F		
(1-20) G		
<i>Not energy efficient - higher running costs</i>		
England, Scotland & Wales	EU Directive 2002/91/EC	



148 Sandwich Road

WHITFIELD, Dover
CT16 3JP

£425,000 FREEHOLD

Draft Details...Price Range £425,000 - £450,000 | Beautiful Four Bed Detached Family Home | Parking For Up To Four Cars | Immaculate Condition Throughout | NHBC Guarantee Remaining | En Suite Shower Room & Family Bathroom | Utility Room | Burnap + Abel are delighted to offer onto the market this fabulous four bed detached family home located in the highly sought after Sandwich Road, Whitfield, Dover. The property is in wonderful condition throughout and the accommodation boasts a spacious lounge, separate dining room, modern fitted kitchen + family bathroom and four good size bedrooms. Additional benefits include off road parking for up to four cars, part converted car barn, utility room (can be changed to a study), downstairs W.C., modern en suite shower room, lovely private rear garden with side access, double glazing and gas central heating. Whitfield is a highly sought after village that is located North of Dover and boasts a range of local amenities and a popular primary school. There are a further range of amenities close by including the new Dover Leisure Centre and Tesco superstore. For your chance to view call sole agent Burnap + Abel on 01304 279107.



Entrance Hall

Laminate floor, radiator, cupboard space, carpeted stairs to the first floor and doors leading to;

W.C.

Laminate floor, low level W.C., wash hand basin, radiator and a frosted double glazed window.

Utility

6' 4" x 5' 4" (1.93m x 1.63m) Laminate floor, integrated washing machine and tumble dryer. Radiator and a double glazed window. Can be turned into a study.

Lounge

16' 2" x 10' 11" (4.93m x 3.33m) A spacious lounge with laminate floor, electric fire, radiator and double glazed doors to the garden.

Dining Room

11' 0" x 10' 6" (3.35m x 3.20m) Laminate floor, space for a table and chairs, radiator and double glazed window.

Kitchen

13' 0" x 9' 5" (3.96m x 2.87m) A modern style kitchen with a mix of wall and base units, integrated fridge freezer, dishwasher and oven/hob. Wall mounted boiler, double glazed window and doors to the garden.

First Floor Landing

Carpeted stairs, carpeted landing, loft hatch, airing cupboard, radiator and doors leading to;

Bedroom One

11' 5" x 10' 11" (3.48m x 3.33m) Large double bedroom with carpeted floor, radiator and double glazed window.

En Suite

Shower, low level W.C., wash hand basin, heated towel rail and frosted double glazed window.

Bedroom Two

13' 0" x 9' 6" (3.96m x 2.90m) Double bedroom with carpeted floor, radiator and double glazed window.

Bedroom Three

9' 9" x 8' 7" (2.97m x 2.62m) Double bedroom with carpeted floor, radiator and double glazed window.

Bedroom Four

11' 3" x 6' 11" (3.43m x 2.11m) Carpeted floor, radiator and double glazed window.

Bathroom

7' 9" x 4' 11" (2.36m x 1.50m) Bath with shower attachment, low level W.C., wash hand basin, heated towel rail and frosted double glazed window.

Garden

A generous size garden with lawn, paved and decked seating areas. Side access and part converted car barn.

Service Charge

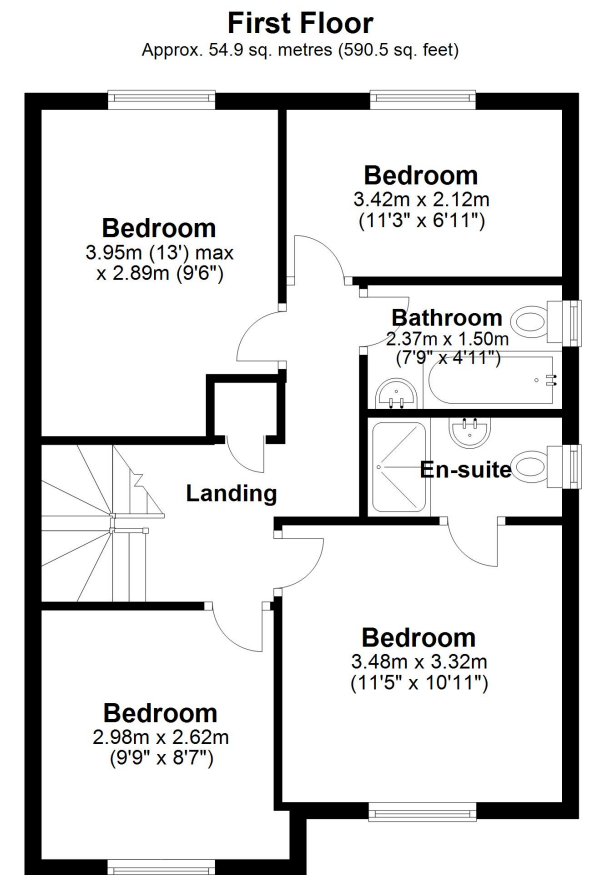
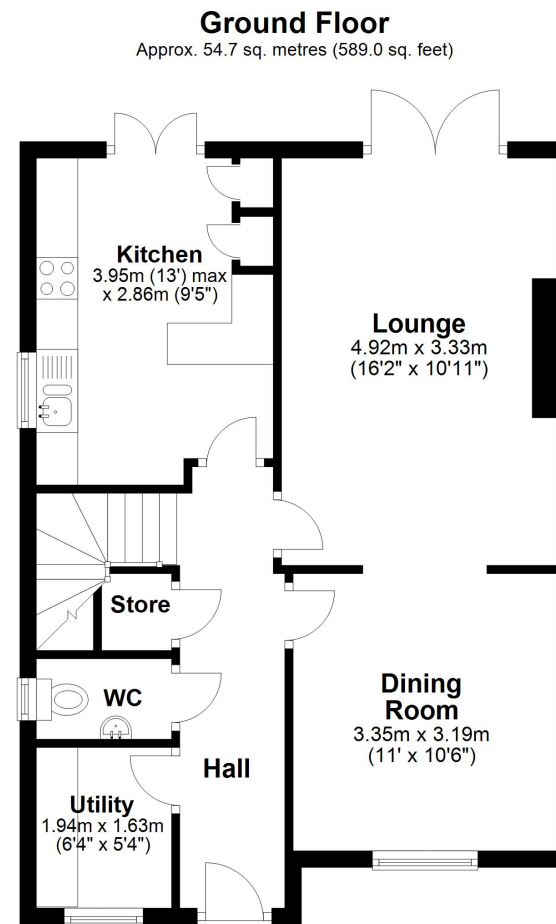
We have been informed by the current vendors that they pay an annual service charge of £170.

Parking

The property has off street parking for up to 4 vehicles and a part converted car barn (which could be opened back up).

Area Information

The village of Whitfield is positioned on the A2/A256 junction and has numerous amenities including a public house, a Doctor's surgery, vets, café, a local Post Office, takeaways, hairdresser and is within a short distance to main retail park which includes a 24 hour Tesco store. 2019 also saw the opening on the brand new Dover District Leisure Centre which boasts a range of facilities including County standard swimming pool. The village has two schools, both of which also cater for special educational needs, Primary and Secondary, Whitfield and Aspen School (Primary) and Dover Christ Church Academy.



Total area: approx. 109.6 sq. metres (1179.5 sq. feet)

Whilst every attempt has been made to ensure the accuracy of the floor plan contained here, measurements of doors, windows, rooms and any other items are approximate and no responsibility is taken for any error, omission or mis-statement. This plan is for illustrative purposes only and should be used as such by any prospective purchaser.
Plan produced using PlanUp.

