

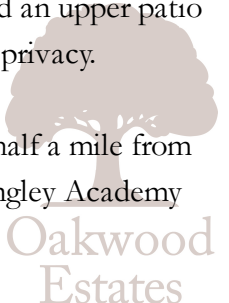
Stretching 1,764 square ft and occupying a desirable plot on a popular 2018 Barratt Homes development is this four bedroom semi-detached town house, offered to the market with an integral garage, offering the potential to convert into an additional reception room or ground floor bedroom.

The ground floor features a downstairs cloakroom, a convenient utility and an outstanding 17ft modern kitchen boasting tiled floor, French doors to rear garden, skylight windows, space for dining furniture and several integrated appliances.

The first floor provides a 17ft living room with double Juliet balconies, spacious family bathroom, and two bedrooms overlooking the rear. The top floor of the property allows for a further two double bedrooms, each with en-suite shower rooms and stretching 17ft across the width of the property.

Externally there are two parking spaces to the front of the house as well as a single garage with an EV charging point installed. The rear garden is of maintainable size, mostly laid to lawn with side access, and an upper patio providing a private space for garden furniture. The garden enjoys a very high degree of privacy.

The property is finished to a very high standard throughout and is perfectly situated less than half a mile from Langley station, and many local schools including the ever-popular Langley Grammar and Langley Academy schools.





Property Information

-  SEMI-DETACHED TOWN HOUSE
-  CLOSE TO LANGLEY STATION
-  PRIVATE REAR GARDEN WITH SIDE ACCESS
-  DOWNSTAIRS CLOAKROOM AND TWO EN-SUITES
-  INTEGRAL GARAGE
-  2018 BARRATT HOMES DEVELOPMENT
-  1,764 SQUARE FT
-  WALKING DISTANCE TO MULTIPLE SCHOOLS
-  17FT KITCHEN/DINER WITH BREAKFAST ISLAND AND SKYLIGHT WINDOWS
-  SEPARATE UTILITY ROOM

  
**x4**  
Bedrooms

  
**x2**  
Reception Rooms

  
**x4**  
Bathrooms

  
**x2**  
Parking Spaces

  
**Y**  
Garden

  
**Y**  
Garage

Transport Links

NEAREST STATIONS:

- Langley (0.5 miles)
- Slough (2.3 miles)
- Datchet (2.8 miles)

Local Schools

PRIMARY SCHOOLS:

- Langley Academy Primary  
0.1 miles
- Ryvers School  
0.3 miles away

Langley Hall Primary Academy  
0.5 miles away

Marish Primary School  
0.5 miles away

Castleview Primary School

0.7 miles away

SECONDARY SCHOOLS

The Langley Academy  
0.2 miles

Langley Grammar School  
0.5 miles

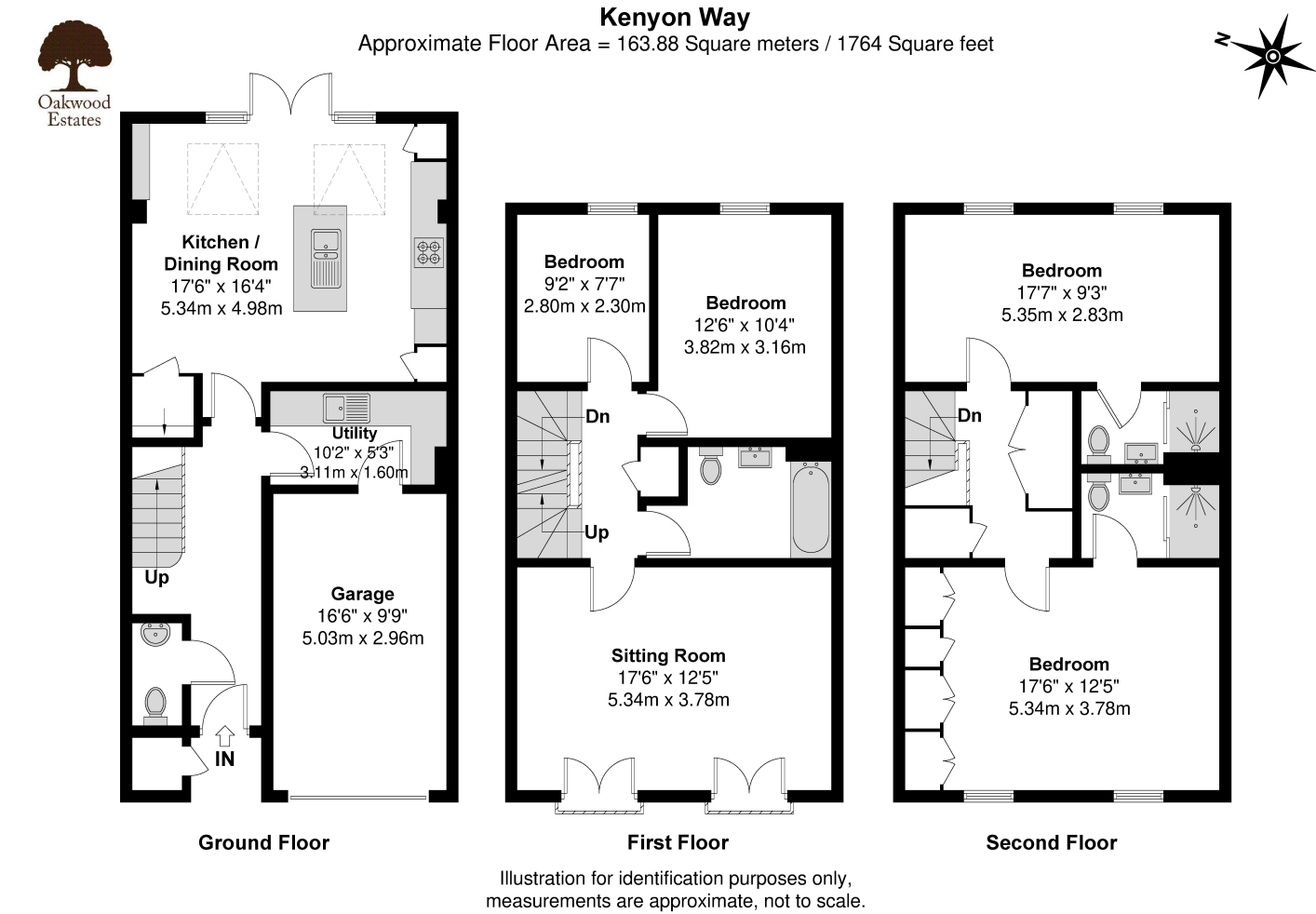
St Bernard's Catholic Grammar School  
0.8 miles away

Ditton Park Academy  
0.9 miles away

Upton Court Grammar School  
1 mile away

**Council Tax**  
Band E

Floor Plan



Prospective purchasers should be aware that these sales particulars are intended as a general guide only and room sizes should not be relied upon for carpets or furnishing. We have not carried out any form of survey nor have we tested any appliance or services, mechanical or electrical. All maps are supplied by Goview.co.uk from Ordnance Survey mapping. Care has been taken in the preparation of these sales particulars, which are thought to be materially correct, although their accuracy is not guaranteed and they do not form part of any contract.

