

3 Bedroom(s), Semi-Detached House, Freehold

Sherwood Drive, Balby, Doncaster.



- 3D Virtual Tour Available
- Kitchen
- Three Bedroom Semi Detached Family Home
- Rear Enclosed Garden
- Great Renovation Project

- Renovated Lounge Diner
- Ground Floor W/C
- Driveway and Garage
- Local Amenities and Transport Links

£175,000
For Sale

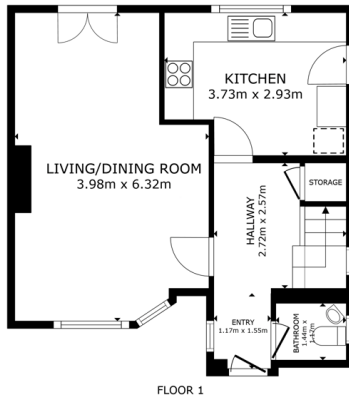
Book your viewing today Tel: 01302 247754

Owner's View

Loved living in this spacious 3-bedroom semi-detached house. Situated on a quiet street with not much traffic, the property enjoys a tranquil setting while still being within easy reach of local amenities and transport links. Stripped back to the basics with loads of potential, ready for someone to come in and finish it any way they like. It has updated and modernised electrics and plumbing throughout the property, sizeable flat garden with plenty of sunshine and very spacious rooms throughout.

Ground Floor

Floor Plan



GROSS INTERNAL AREA
FLOOR 1: 44.6 sq ft FLOOR 2: 40.4 sq ft
TOTAL: 85.0 sq ft
SIZES AND DIMENSIONS ARE APPROXIMATE, ACTUAL MAY VARY.

Matterport

Entry Hall



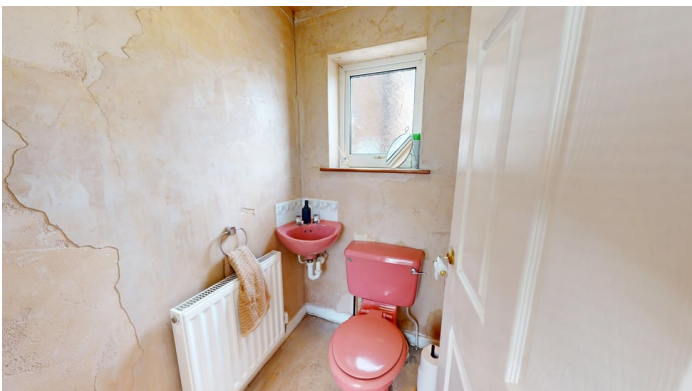
Lounge Diner



Kitchen

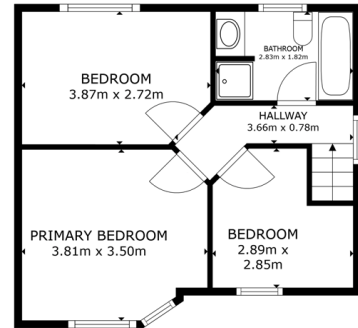


W/C



First Floor

Floor Plan



FLOOR 2

GROSS INTERNAL AREA
 FLOOR 1: 84.6 m² FLOOR 2: 48.4 m²
 TOTAL: 133.0 m²
 SIZES AND DIMENSIONS ARE APPROXIMATE, ACTUAL MAY VARY

Matterport

Master Bedroom



Bedroom





Bedroom



Front Aspect



Family Bathroom



Rear Garden



Externals

Property Description

Council Tax Band - B

Utilities - Mains Gas, Mains Electricity, Mains Water

Water Meter - Yes

Tenure - Freehold

Solar Panels - No

Space Heating System - Gas Boiler with radiators

Approximate Heating System Installation Date - 5/24/2023

Water Heating System - Gas boiler (Combi)

Approximate Water Heating Installation Date - 5/24/2023

Boiler Location - Loft



Approximate Electrical System Installation Date - 5/5/2023

Permanent Loft Ladder - Yes

Loft Insulation - Yes

Loft Boarded out – Yes

Whilst every effort is made to ensure that the information contained in these particulars is reliable, they do not constitute or form part of an offer or any contract. The Property Hive accept no liability for the accuracy of the contents, and therefore they should be independently verified by prospective buyers or tenants before agreeing an offer. All measurements provided are approximate and should be verified before exchange of contracts. No appliances, fixtures or fittings have been tested and should be checked by the buyer before exchange of contracts to ensure they are in good working order.

Energy Performance Certificate

