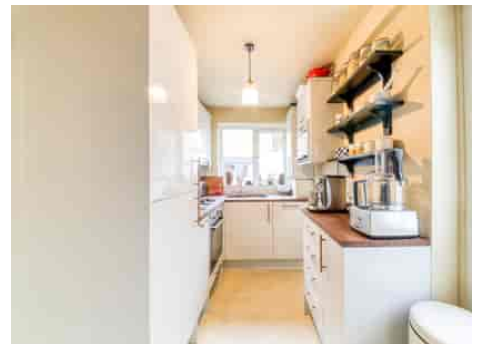


Truuli



Southbridge Road, Croydon, Surrey, CR0 1AF

£380,000 Freehold

- Two double bedrooms
- Off street parking
- Exposed brick fireplace
- Close proximity to the Restaurant Quarter
- Well maintained, decked, spacious garden
- Side access to the property and the garden
- Good condition throughout
- Guide price £380,000 - £400,000

Southbridge Place, Surrey, CR0 4HA

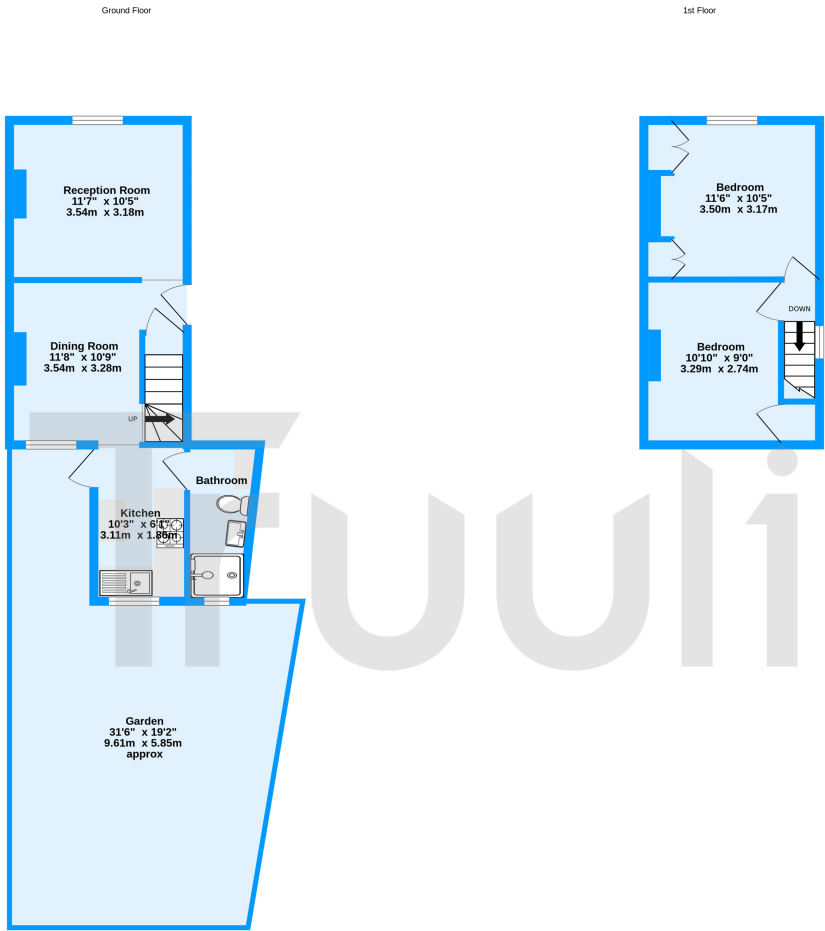
Tel: 0330 043 0002

Email: save@truuli.co.uk Web: www.truuli.co.uk

Southbridge Road, Croydon, Surrey, CR0 1AF

£380,000 Freehold

** Guide price £380,000 - £400,000 ** ***Vendor's comments*** "We bought Southbridge Road because we loved that it was a house rather than a flat and based on our budget, most of the other properties we were looking at were flats. Since our first viewing almost six years ago, we have always been drawn to the fact that it feels like a lovely cosy cottage - a welcome escape from the business that city life can bring."



Southbridge Road, Croydon, CR0
TOTAL FLOOR AREA : 614sq.ft. (57.0 sq.m.) approx.
Measurements are approximate. Not to scale. Illustrative purposes only
Made with Metroplex 62024

