

PAUL ALEXANDER
MORTGAGE CONSULTANTS

For all insurance and mortgage needs,
please call Paul Alexander Mortgage Consultants
on 020 8997 3915

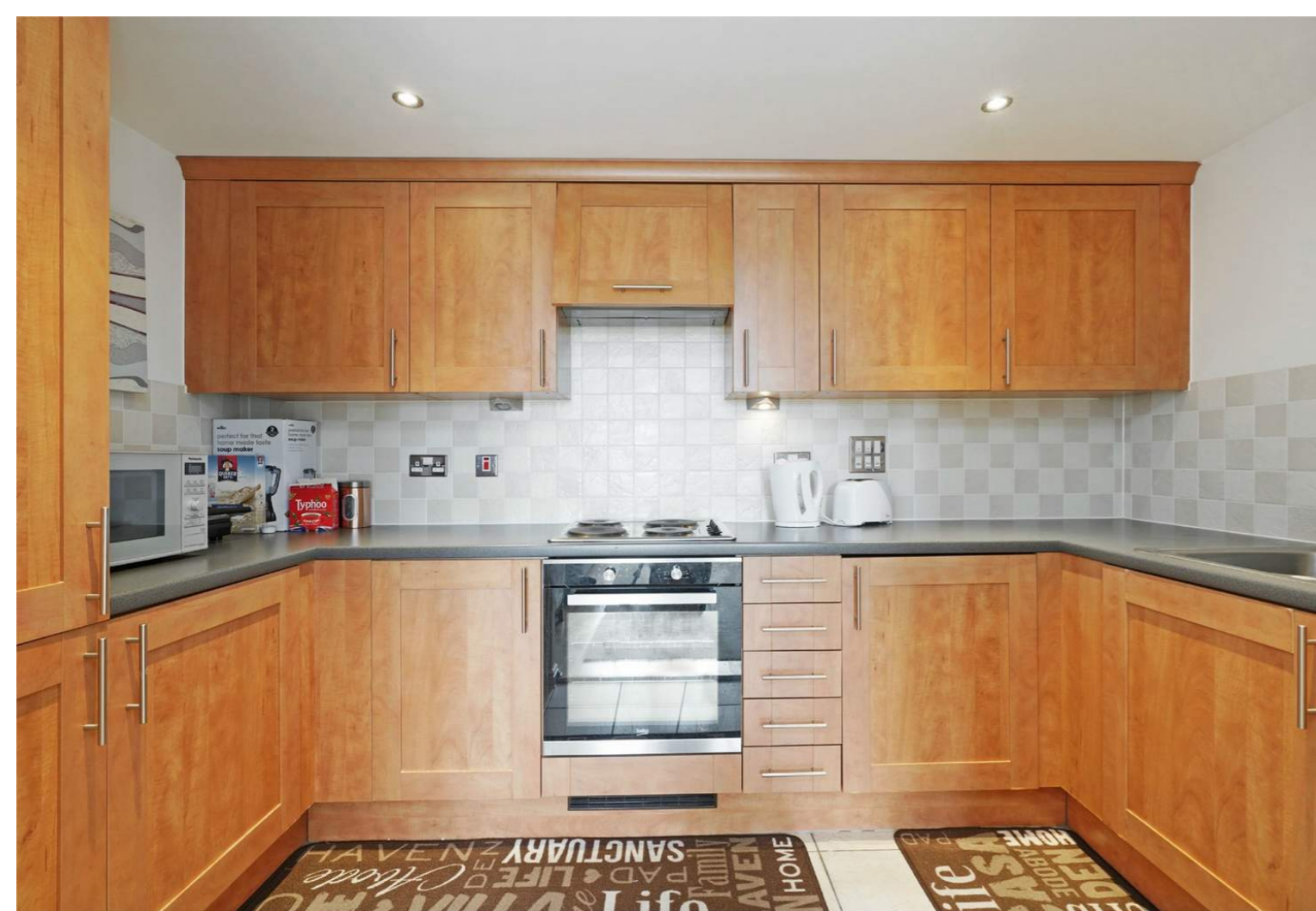
LONDON'S LOCAL AGENT
enquiries@orchardsoflondon.com
020 3962 6000 | orchardsoflondon.com
Westworld West Gate London W5 1DT

SINGAPORE ROAD

£1,450 pcm

- Two bedrooms
- Two bathrooms
- Sixth floor
- Excellent location
- Close to amenities
- Superb local schooling
- Near transport links
- Easy access to Ealing Broadway
- Available now

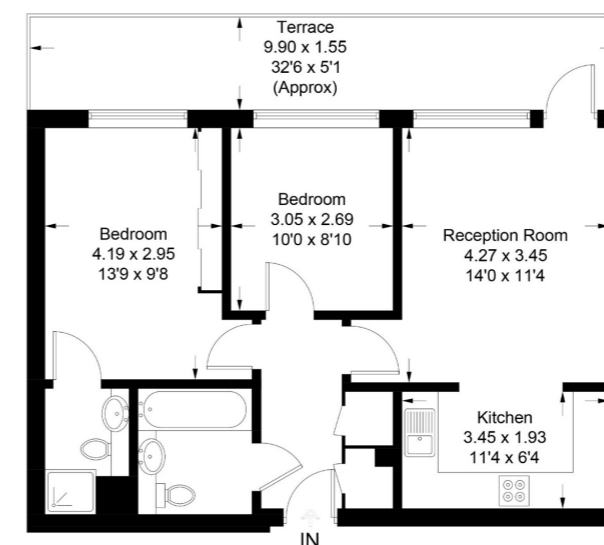
LONDON'S LOCAL AGENT
enquiries@orchardsoflondon.com
020 3962 6000 | orchardsoflondon.com
Westworld West Gate London W5 1DT



Orchards of London are delighted to bring to the lettings market this well sized, sixth floor, two bedroom apartment. The property comprises of Two well sized bedrooms that overlook a private terrace, two bathrooms, one of which is the en-suite to the master bedroom, a open plan kitchen/diner and reception room which opens out to a private terrace. Being on the sixth floor your vistas stretch across Ealing and beyond. The property is located in West Ealing in a desirable purpose built block of apartments. Amenities are in close proximity and commuters are near West Ealing Overground whilst motorists are near the M4 and other connections making the journey in and out of London an easy one.

Pershore House, Singapore Road, W13

Approximate Gross Internal Area = 60.3 sq m / 649 sq ft



Energy Efficiency Rating		Current	Potential
Very energy efficient - lower running costs			
(92-100)	A		
(81-91)	B		
(69-80)	C		
(55-68)	D		
(39-54)	E		
(21-38)	F		
(1-20)	G		
Not energy efficient - higher running costs			
England, Scotland & Wales		60	84

Measured in accordance with RICS Code of Measuring Practice. To be used for identification and guidance purposes only. Whilst every care is taken in the preparation of this plan, please check all dimensions, shapes and compass bearings before making any decisions reliant upon them. www.london58.com © 2018 hello@london58.com