

# Heritage Close

Peasedown St John, BA2 8TJ

COOPER  
AND  
TANNER



£0 Not Applicable

Heritage Close  
Peasedown St John  
BA2 8TJ

 4  0  2 EPC C

---

£0 Not Applicable





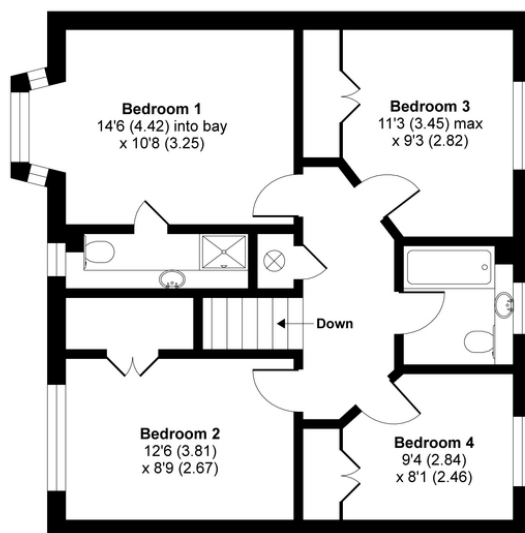
## Heritage Close, Peasedown St. John, Bath, BA2

Approximate Area = 1201 sq ft / 111.5 sq m

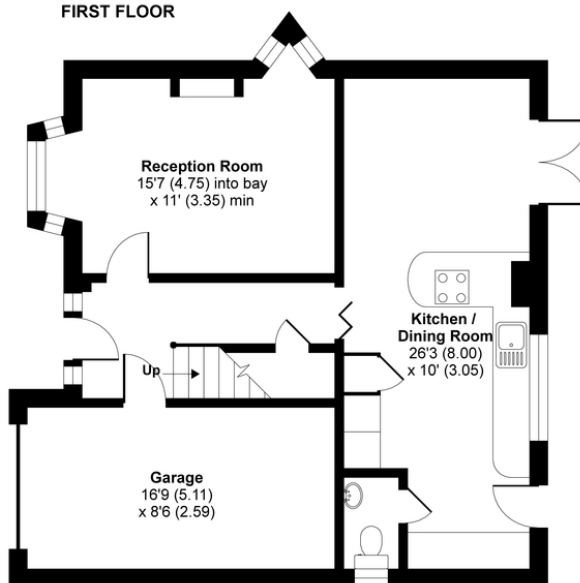
Garage = 148 sq ft / 13.7 sq m

Total = 1349 sq ft / 125.3 sq m

For identification only - Not to scale



FIRST FLOOR



GROUND FLOOR



Floor plan produced in accordance with RICS Property Measurement Standards incorporating International Property Measurement Standards (IPMS2 Residential). © nlichecom 2021. Produced for Cooper and Tanner. REF: 789218

### FROME OFFICE

Telephone 01373 455060

6, The Bridge, Frome, Somerset BA11 1AR

[frome@cooperandtanner.co.uk](mailto:frome@cooperandtanner.co.uk)

**COOPER  
AND  
TANNER**

Important Notice: These particulars are set out as a general outline only for the guidance of intended purchasers and do not constitute, nor constitute part of, an offer or contract. All descriptions, dimensions, reference to condition and necessary permissions for use and occupation, warranties and other details are given without responsibility and any intending purchasers should not rely on the measurements or representations of fact but must satisfy themselves by inspection or otherwise as to the correctness of each of them.

