



Wolsey Road, Ashford, Surrey,

TW15 2RB

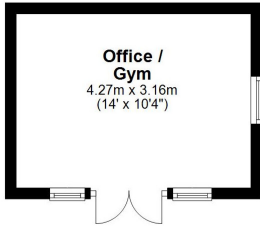
STUNNING FOUR BEDROOM, THREE BATHROOM PERIOD HOME IN MUCH SOUGHT AFTER LOCATION EXTENSIVELY UPDATED BY THE CURRENT OWNERS TO AN EXACTING STANDARD. The property benefits from luxury kitchen/diner/family room with bi-folding doors to garden, separate utility, lounge, playroom, downstairs W.C, four double bedrooms with en-suite facilities to bedroom 1 & 2, further luxury bathroom, extensive rear garden with cabin and integral storage area. Viewings Highly Recommended!

ROOM DESCRIPTIONS

FLOORPLAN

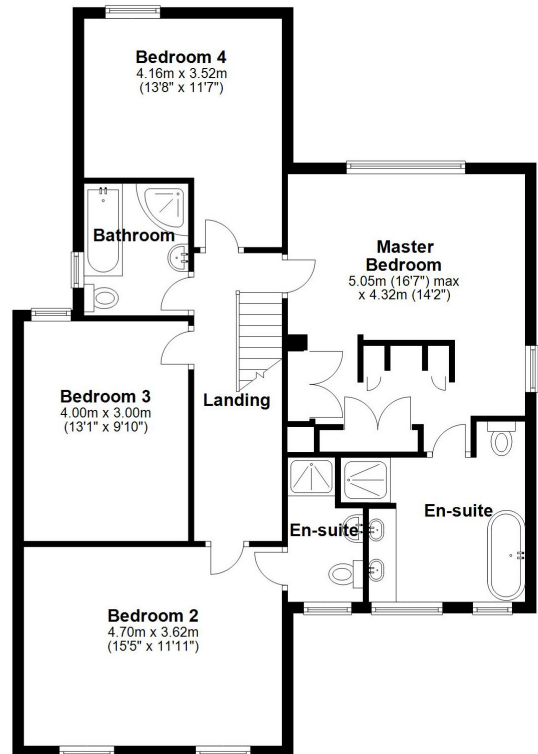
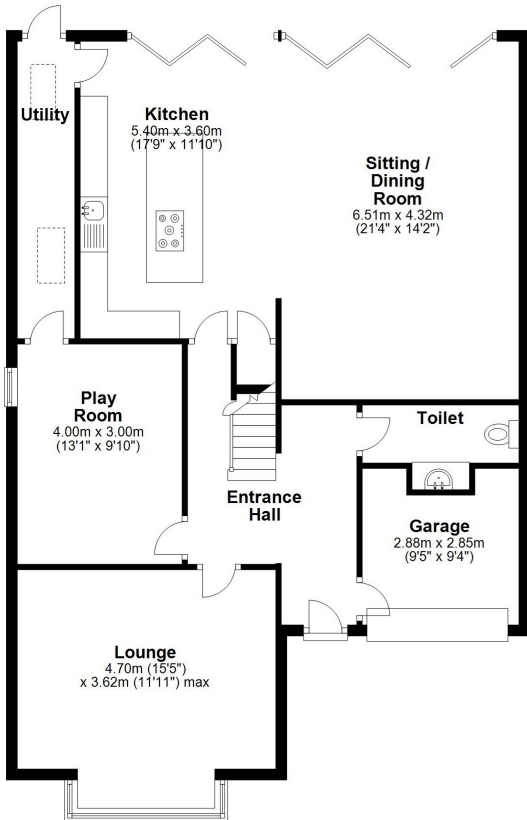
Ground Floor

Approx. 123.4 sq. metres (1328.4 sq. feet)



First Floor

Approx. 90.1 sq. metres (970.3 sq. feet)



Total area: approx. 213.6 sq. metres (2298.8 sq. feet)