



3 Bedroom Semi-Detached House £525,000 – FREEHOLD

2 Blacksmith Cottage | Stevenage Road | Little Wymondley | Hitchin | SG4 7JA

FINE & COUNTRY







# Step inside

## Blacksmith Cottage

Beautifully modernised, this stunning period home is situated in the heart of Little Wymondley, a charming Hertfordshire village ideally located between Hitchin and Stevenage. Offering a seamless blend of heritage character and contemporary finish, this semi-detached cottage has been thoughtfully updated by the owners to create a stylish and comfortable home in a peaceful yet well-connected setting.

The ground floor welcomes you into a spacious and light-filled open-plan reception room, where the sitting and dining areas flow effortlessly into one another. With views to both the front and rear, this beautifully arranged space is perfect for entertaining, relaxing, or enjoying day-to-day life in comfort. The room retains a warm, homely atmosphere while offering flexibility in layout and filled with an abundance of natural light. From here, the modern kitchen is accessed via a connecting door, and features contemporary cabinetry, modern worktops, and integrated appliances, all chosen with care to suit both aesthetic appeal and practical needs whilst overlooking the stunning rear garden space. A stylish ground floor bathroom completes the downstairs accommodation and has been finished to a high standard in keeping with the rest of the home.

Upstairs, the cottage offers three well-proportioned bedrooms, each thoughtfully decorated in a neutral palette to enhance the sense of light and space. The principal bedroom is a particularly bright room with fitted storage, while the second bedroom is a comfortable double with a peaceful rear aspect. The third bedroom, though smaller in size, makes an ideal nursery, dressing room or home office, depending on your needs.



# About the area

## Little Wymondley

Little Wymondley is a picturesque Hertfordshire village that captures the essence of traditional English countryside living, while offering exceptional convenience for modern life. Surrounded by open fields and gently rolling landscapes, the village is known for its quiet charm, welcoming atmosphere, and strong sense of community.

At the heart of the village lies a historic church and a well-loved local pub, while the nearby towns of Hitchin and Stevenage provide an excellent range of shops, restaurants, cafés, and cultural attractions. Hitchin's vibrant market square, boutique retailers and acclaimed dining spots are just a short drive away, offering everything you need for day-to-day living in an attractive, character-filled setting.

Despite its rural feel, Little Wymondley is exceptionally well connected. Both Hitchin and Stevenage offer fast and frequent train services into London King's Cross in under 30 minutes, and the A1(M) is easily accessible for travel by road. This makes the village a popular choice for those seeking a peaceful, village lifestyle without sacrificing commuting ease.

The area is also ideal for families, with highly regarded schools nearby and an abundance of green spaces for outdoor recreation. Footpaths and country walks weave through the surrounding countryside, making it a haven for walkers, cyclists, and those simply looking to enjoy the fresh air.















# Step outside

## Blacksmith Cottage

Tucked away from the road behind mature planting and a well-maintained boundary fence, Blacksmith Cottage enjoys a wonderful sense of privacy. A gravelled driveway leads to a timber-framed car port, offering covered parking alongside additional space for multiple vehicles, a rare and highly desirable feature in a cottage of this kind.

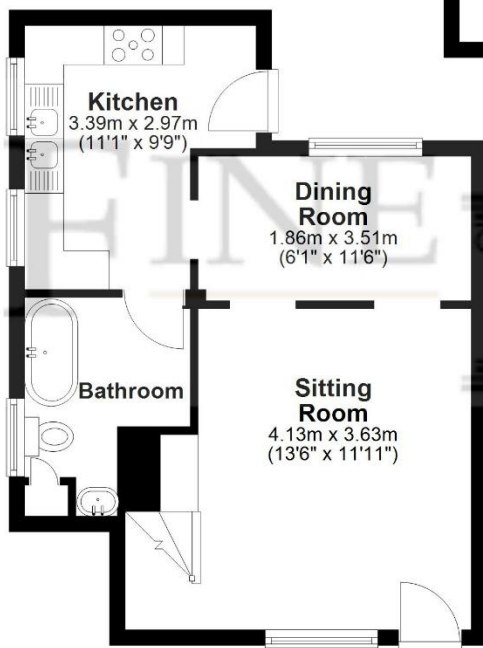
The front elevation is charming, with dark timber cladding and white-painted lower walls giving the property a characterful and timeless appearance. A side gate provides access to the beautifully landscaped rear garden, a true highlight of the home.

The garden has been thoughtfully designed to create distinct zones for relaxation and entertaining, blending soft lawn areas with elegant slate paving and raised beds planted with a variety of shrubs, ferns and seasonal blooms. Steps lead down from the parking area to a stylish sunken patio, complete with a comfortable seating area and parasol, perfect for hosting summer gatherings or enjoying quiet evenings outdoors. Mature trees and screening plants create a peaceful, enclosed feel, while the elevated planting beds and carefully placed pots add structure and charm.

With its mix of practicality, privacy and thoughtful design, the outside space at 2 Blacksmith Cottage is as inviting and well-finished as the interior, offering a perfect extension of the home's character and a tranquil retreat from everyday life.



## Ground Floor



**Car Port**  
2.44m x 6.17m  
(8' x 20'3")

## First Floor



For illustrative purposes only - NOT TO SCALE - Measurements shown are approximate. The size and position of doors, windows, appliances and other features are approximate.  
Plan produced using PlanUp.

Fine & Country  
Tel: +44(0) 1462 222555  
[northherts@fineandcountry.com](mailto:northherts@fineandcountry.com)  
Station Place, Letchworth Garden City, Hertfordshire SG6 3AQ

