

14 Rue Verte Villas La Grande Route de St Laurent, St Lawrence.
JE3 1NJ

£850,000 Freehold

SOLD STC



PROPERTY DESCRIPTION

This spacious semi-detached family home, featuring 4 bedrooms and 2 bathrooms, is ideally situated on the outskirts of St Helier. The property offers a well-designed two-floor layout, including a thoughtful first-floor extension above the garage creating the fourth bedroom.

The ground floor also has been extended to create a stunning open-plan kitchen, dining, and snug area. The modern kitchen features a breakfast bar, a convenient pantry/utility cupboard, and Velux skylight windows that brighten the space. Bi-fold doors open to a large, enclosed garden, perfect for outdoor gatherings.

The ground floor also includes a separate dining room and a cozy lounge with a bay window and a log burner, adding warmth and character. Additionally, there is a house bathroom with a bath on this level.

To the first floor, the layout is split into two levels. To the right, features a single bedroom, while to the left, you'll find two double bedrooms, one with fitted wardrobes, a versatile box room or study, and a modern shower room.

Externally, the property features a low maintenance east facing garden, a single garage and parking spaces for up to 4 vehicles. This home perfectly balances modern amenities with functional design, making it an ideal choice for families. The property is available with no onward chain.

FEATURES

- 4 bed 2 bath semi detached home
- Garage & parking for 4
- Open plan kitchen/diner/living
- Large enclosed rear garden
- First floor & rear extension
- Sole agency, no onward chain



ROOM DESCRIPTIONS

Services

Services

All mains excluding gas. OFCH. Fully double glazed.

Directions

Travelling towards St Lawrence Village on Le Mont Felard, pass the turning on LHS for Ville Emphrie and Verte Rue Villas are the row of houses on the RHS.

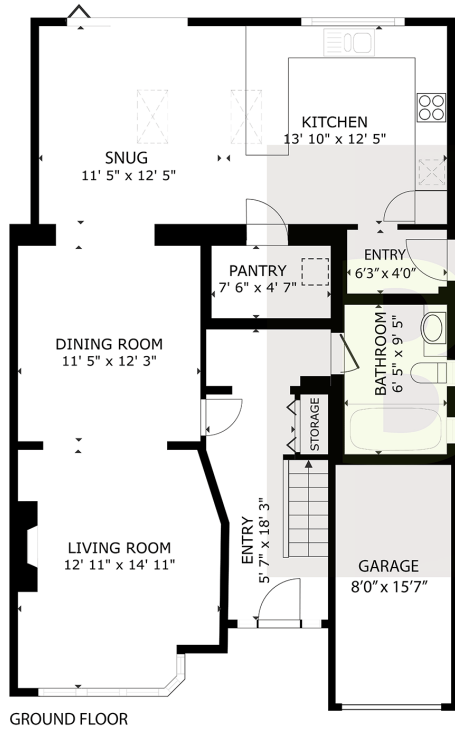
What3Words: <https://w3w.co/spied.yowled.tango>







FLOORPLAN



GROSS INTERNAL AREA
GROUND FLOOR: 948 sq. ft, FIRST FLOOR: 547 sq. ft
TOTAL: 1495 sq. ft

EXCLUDED AREAS: GARAGE 124 sq. ft

SIZES AND DIMENSIONS ARE APPROXIMATE, ACTUAL MAY VARY

