

Westleigh

Warminster, BA12 8NJ

COOPER
AND
TANNER



£115,000 Leasehold

🛏 1 🛋 1 🚿 1 EPC C

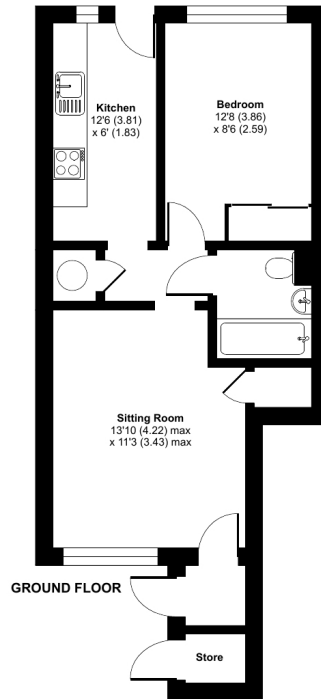
Description

This one bedroom flat with off road parking comes to market with no onward chain. The property, which is situated close to local amenities, has been renovated by the current owners and would be ideal for a first time buyer or investor. Entering the property, there is a store cupboard and a porch with access to the sitting room which has more storage. The hall in the middle gives access to the bathroom, bedroom which is a double with built in storage and kitchen. The kitchen has been recently updated with wall and base units and a door to outside space and parking.



Pound Court, Westleigh, Warminster, BA12

Approximate Area = 442 sq ft / 41 sq m
Outbuilding = 10 sq ft / 0.9 sq m
Total = 452 sq ft / 42 sq m
For identification only - Not to scale



Floor plan produced in accordance with RICS Property Measurement Standards incorporating International Property Measurement Standards (IPMS2 Residential). © nichecom 2022. Produced for Cooper and Tanner. REF: 912542



Features

- Purpose Built Flat
- One Bedroom
- Living Room/Diner
- Bathroom
- Off Road Parking
- Close To Local Amenities
- Electric Economy 7 Heating
- No Onward Chain



Local Information

- Council Tax Band A
- Tenure Leasehold
- EPC Rating C

WARMINSTER OFFICE

Telephone 01985 215579

48-50, Market Place, Warminster, Wiltshire BA12 9AN

warminster@cooperandtanner.co.uk

**COOPER
AND
TANNER**

Important Notice: These particulars are set out as a general outline only for the guidance of intended purchasers and do not constitute, nor constitute part of, an offer or contract. All descriptions, dimensions, reference to condition and necessary permissions for use and occupation, warranties and other details are given without responsibility and any intending purchasers should not rely on the m as statements or representations of fact but must satisfy themselves by inspection or otherwise as to the correctness of each of them.

