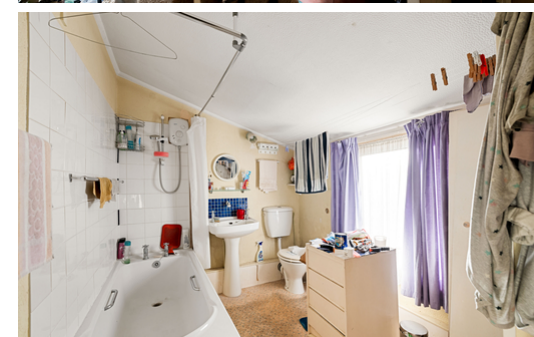


## 29 Odo Road

Dover  
CT17 0DP

**£130,000 FREEHOLD**

Draft Details...FOR SALE THROUGH BURNAP + ABEL...Price Range £130,000 - £140,000 | This two-bedroom terraced house presents an excellent opportunity for buyers looking to refurbish and add value. In need of modernisation throughout, the property is ideally suited to investors or those keen to put their own stamp on a home. The accommodation comprises two reception rooms, a kitchen, and a bathroom accessed via one of the bedrooms. Outside, the property benefits from a generous-sized sunny rear garden, offering plenty of potential for outdoor space. Additional benefits include gas central heating and the advantage of being sold chain-free, allowing for a straightforward purchase. Conveniently located within walking distance of a number of schools, shops, and local amenities, this home combines potential with a practical location - making it a fantastic project opportunity. For your chance to view call Burnap + Abel on 01304 279107.





Lounge

13' 6" x 10' 11" (4.11m x 3.33m)

Dining Room

10' 2" x 9' 11" (3.10m x 3.02m)

Kitchen

9' 3" x 7' 1" (2.82m x 2.16m)

Bedroom One

13' 7" x 10' 10" (4.14m x 3.30m)

Bathroom

9' 4" x 7' 1" (2.84m x 2.16m)

Bedroom Two

13' 7" x 9' 11" (4.14m x 3.02m)

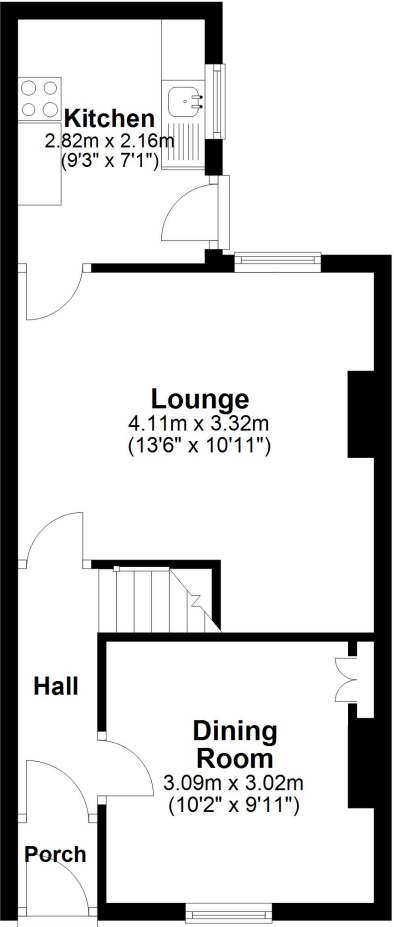
Garden

Area Information

Located in a popular suburb of Dover and just a short walk into town and the high speed train station which will have you in London, St Pancras in just over an hour. Dover is perhaps best known for its towering White Cliffs & Dover Castle, but the historic port and surrounding areas have a lot more to offer than simply the natural formation, from historical sites to seaside eateries to boat trips. A good selection of well regarded schools are within close proximity including the Dover Grammar Schools and Duke of York's Royal Military School

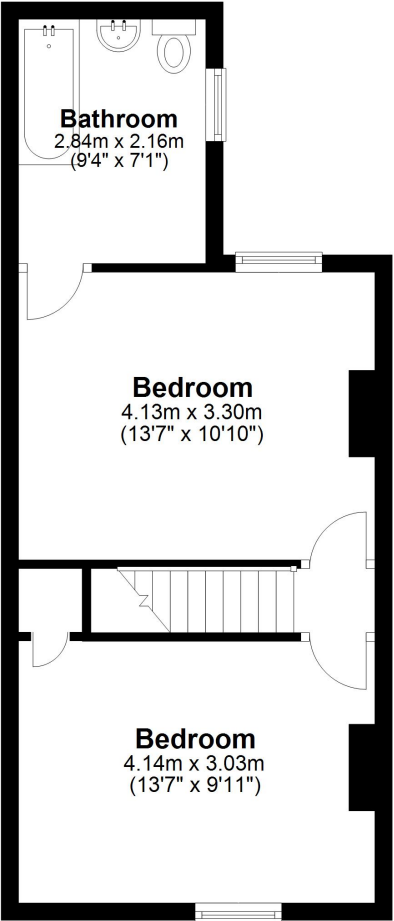
Ground Floor

Approx. 36.2 sq. metres (390.0 sq. feet)



First Floor

Approx. 36.3 sq. metres (390.4 sq. feet)



Total area: approx. 72.5 sq. metres (780.4 sq. feet)

