



2 Stokes Court, Ponthir, Newport. NP18 1RY
£515,000
Tenure Freehold

- STUNNING DETACHED FAMILY HOME
- 4 BEDROOMS
- KITCHEN/DINING/FAMILY ROOM
- SITTING ROOM/STUDY
- REFITTED FAMILY BATHROOM & EN-SUITE
- DETACHED GARAGE & EXTENSIVE PARKING
- EASILY MAINTAINED GARDENS
- SOUGHT AFTER LOCATION

STUNNING, 4 BEDROOM, DETACHED FAMILY HOME IN HIGHLY SOUGHT AFTER LOCATION WITH OPEN PLAN KITCHEN/DINING/FAMILY ROOM WITH BI-FOLDING DOORS, LOUNGE, SITTING ROOM, REFITTED BATHROOM, EN-SUITE, DETACHED GARAGE WITH EXTENSIVE PARKING

Situated between Caerleon & Cwmbran this exceptionally well presented detached family home occupies a generous corner plot having easily maintained gardens to the front & rear and benefits from a detached garage along with extensive parking.

The property has been updated by its present owners to an exceptional standard which includes a superb modern kitchen/dining/family room with bi folding doors opening to the rear garden, further accommodation includes: An entrance hall with stairs to the first floor and cloakroom/wc. The lounge benefits from a bay window with window seat having storage beneath and feature fire place. A garage conversion provides a good size study or sitting room again with outlook to the front. To the first floor: A landing leads to 4 generous bedrooms all having built in wardrobes or storage. The master bedroom benefits from a contemporary en-suite shower room with modern bathroom serving the remaining bedrooms. Outside: The property occupies a corner plot. To the front a garden laid to lawn with beds laid with stone. A double brick paved driveway leads to the detached garage, canopy porch and side access. To the rear: A decked seating area leads onto a level garden partly laid to lawn remainder laid with stone, a secondary decked seating area extends to the side and rear of the garage with numerous power sockets located around the garden, all enclosed by walling and fencing.

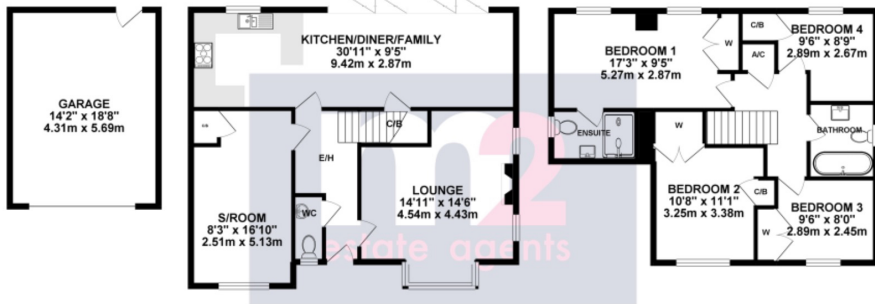
Services:

Council Tax Band:



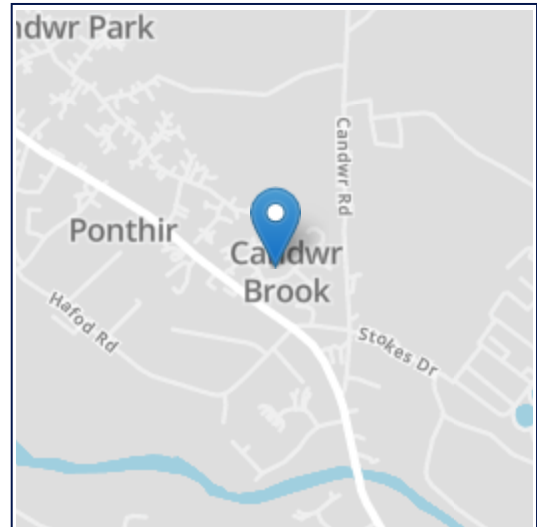
GROUND FLOOR 1042.13 sq. ft.
(96.82 sq. m.)

1ST FLOOR 646.75 sq. ft.
(60.08 sq. m.)



TOTAL FLOOR AREA: 1688.87 sq. ft. (156.90 sq. m.) approx.

Whilst every attempt has been made to ensure the accuracy of the floorplan contained herein, measurements of doors, windows, rooms and any other items are approximate and no responsibility is taken for any error, omission or mis-statement. This plan is for illustrative purposes only and should be used as such by any prospective purchaser. The services, systems and appliances shown have not been tested and no guarantee as to their operability or efficiency can be given.
Made with Makropi ©2024



Energy Efficiency Rating

	Current	Potential
Very energy efficient - lower running costs		
(92+)	A	
(81-91)	B	82
(69-80)	C	
(55-68)	D	62
(39-54)	E	
(21-38)	F	
(1-20)	G	
Not energy efficient - higher running costs		
England, Scotland & Wales		EU Directive 2002/91/EC

All room sizes are approximate. Electrical installations, plumbing, central heating and drainage installations are noted on the basis of a visual inspection only. They have not been tested and no warranty of condition or fitness for purpose is implied in their inclusion. Potential purchasers are warned that they must make their own enquiries as to the condition of the appliances, installations or any element of the structure or fabric of the property.

M2 Estate Agents for themselves and for the Vendors and Lessors of this property whose agents they are give notice that, (i) the particulars are set out as a general outline only for the guidance of the intended Purchasers or Lessors, and do not constitute part of an offer or contract (ii) all descriptions, dimensions, reference to condition and necessary permissions for the use and occupation and other details are given without responsibility and any intending Purchasers or Tenants should not rely on them as statements or representations of fact but satisfy themselves by inspection or otherwise as to the correctness of each of them (iii) no person in the employment of M2 Estate Agents has any authority to make or give any representation or warranty whatever in relation to this property.