



34 Hornbeam House, 22 Quebec Way, London SE16 7EW

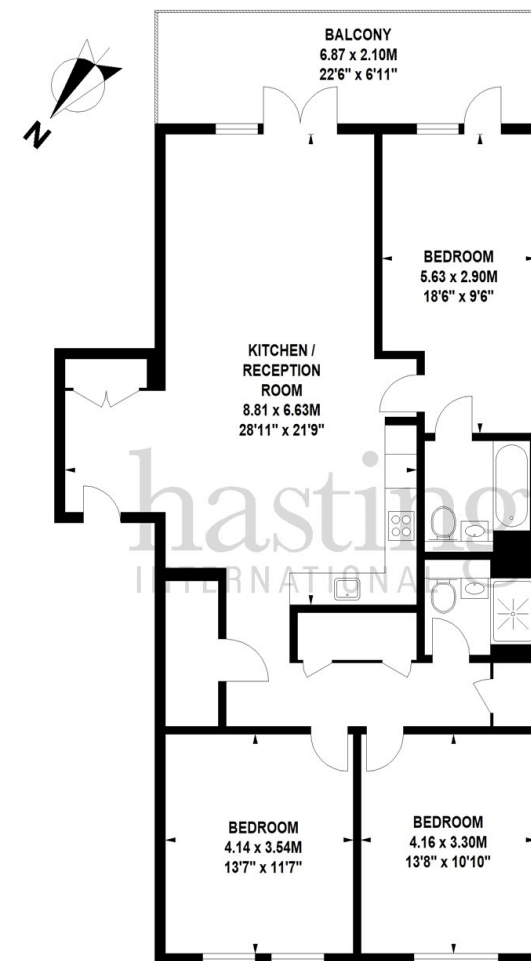
A smart three double bedroom, second floor apartment offered in excellent condition with a spacious open plan kitchen, reception and modern finishings. Other Benefits include video door entry system, Cycle Storage and Floor to Ceiling Windows. The development is stylish, luxurious and secure, with on-site concierge & Luxury landscaped gardens. Located very close to Canada Water tube station, the development is quiet and relaxed whilst being extremely convenient for transport - one stop to Canary Wharf or two to London Bridge on the Jubilee line allows for a fast and effortless commute.

Sophisticated and modern 3 Bedroom Apartment in this luxury development. Located on the second floor, this gorgeous apartment, which is part of the prestigious Quebec Quarter development has an impeccably elegant finish, with Kamdean flooring. This second floor property comprises of an open plan living area with a private balcony, a large master bedroom with en suite, a further two double bedroom

- Open Plan Kitchen/Reception
- 2 Bath/Shower Rooms
- Balcony
- Bike Storage
- 2nd Floor
- 3 Double Bedrooms
- Some Wooden Floors
- Concierge
- Approx 1100 sqft

Hornbeam House, Quebec Way, SE16

Approximate Gross Internal Area 114 sq.m / 1227 sq.ft



Second Floor

Illustration for identification purposes only, not to scale

All measurements are maximum, and includes wardrobes and window bays where applicable



