



## **5 Romana Court Sidney Road, Staines-upon-Thames, Surrey. TW18 4QJ**

SPACIOUS ONE BEDROOM APARTMENT IN SOUGHT AFTER DEVELOPMENT IDEALLY LOCATED WITHIN MOMENTS OF MAINLINE TRAIN STATION & HIGH STREET. The property benefits from a spacious lounge/diner, fitted kitchen, large double bedroom with built-in wardrobes, bathroom, allocated parking and no onward chain. Viewings Highly Recommended!

## ROOM DESCRIPTIONS

---

### Communal Entrance

Security entry-door, stairs leading to first floor.

### Entrance Hall

Light and power points, security entry-phone, built-in storage cupboard housing hot water tank, further built-in storage cupboard.

### Lounge/Diner

Rear aspect UPVC double glazed window, light and power points, storage heater.



### Kitchen

Range of fitted units at eye and base level, roll edged worktops, sink drainer unit, built-in oven and hob, space for automatic washing machine and fridge/freezer, laminate wood-style flooring. Light and power points.



### Bedroom

Front aspect UPVC double glazed window, light and power points, built-in wardrobes, panel heater.



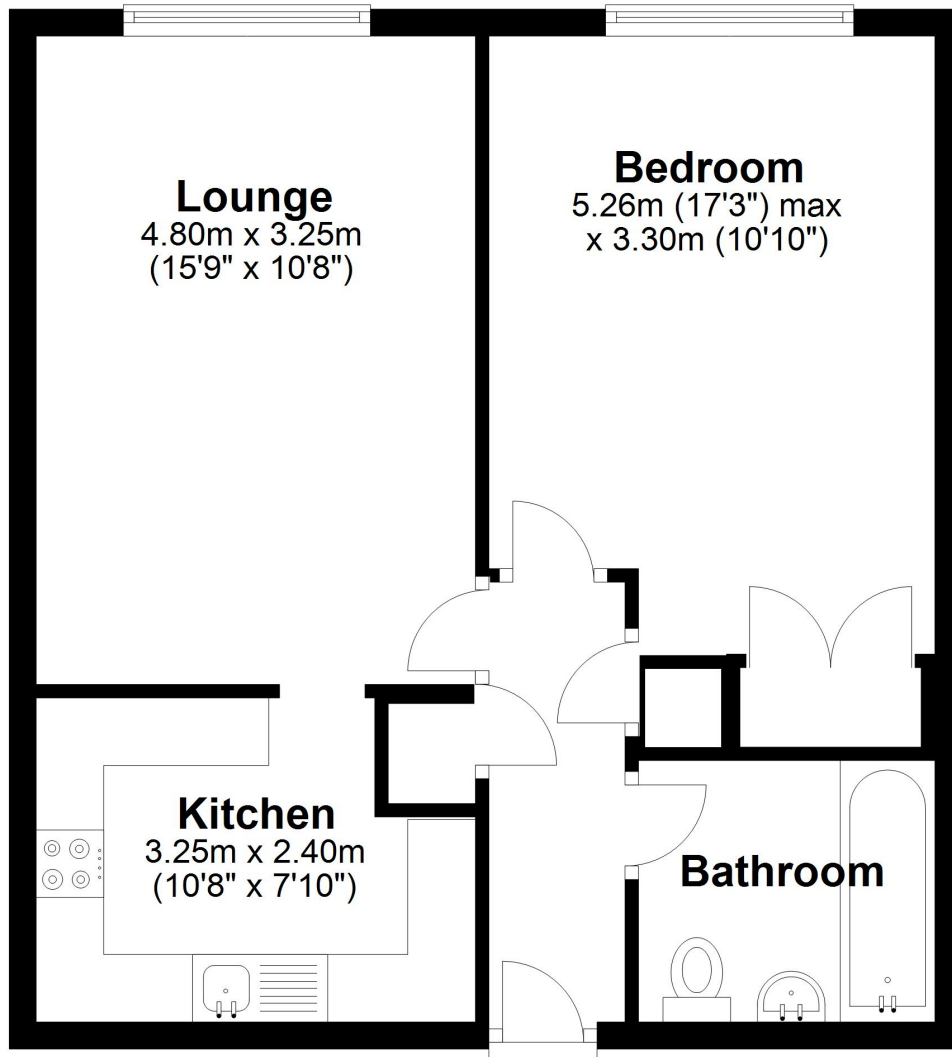
### Bathroom

Three piece bathroom suite comprising panel enclosed bath with shower over, low level W.C and wash hand basin.



# FLOORPLAN

---



Total area: approx. 48.8 sq. metres (525.0 sq. feet)