

£117,500
Leasehold



Angus Way

FOR SALE
THOMAS CONNOLLY
01908 774422
www.thomasconnolly.co.uk

THOMAS CONNOLLY
ESTATE AGENTS | LETTING AGENTS | NEW HOMES | PROPERTY MANAGEMENT



Summary of Property

Thomas Connolly Estate Agents are delighted to present this two bedroom top floor shared ownership apartment on a 50% share situated in the sought after location of Whitehouse Park. Offering numerous amenities including schools / shops / shopping centres / traffic links.

Accommodation briefly comprises; entrance hall, kitchen and sitting room, two bedrooms and a family bathroom. Outside there is road parking for one vehicle. The property further benefits from double glazing.

Please contact Thomas Connolly Estate Agents for further information relating to this property or to confirm viewing arrangements.

If you are thinking of buying, selling, renting or require mortgage advice, please do not hesitate to contact us to see how we can help you.

Room Descriptions

TOP FLOOR ENTRANCE HALL

SITTING ROOM

12' 8" x 14' 7" (3.86m x 4.45m)

KITCHEN

7' 5" x 12' 7" (2.26m x 3.84m)

BEDROOM ONE

9' 9" x 14' 8" (2.97m x 4.47m)

BEDROOM TWO

9' 3" x 11' 2" (2.82m x 3.40m)

BATHROOM

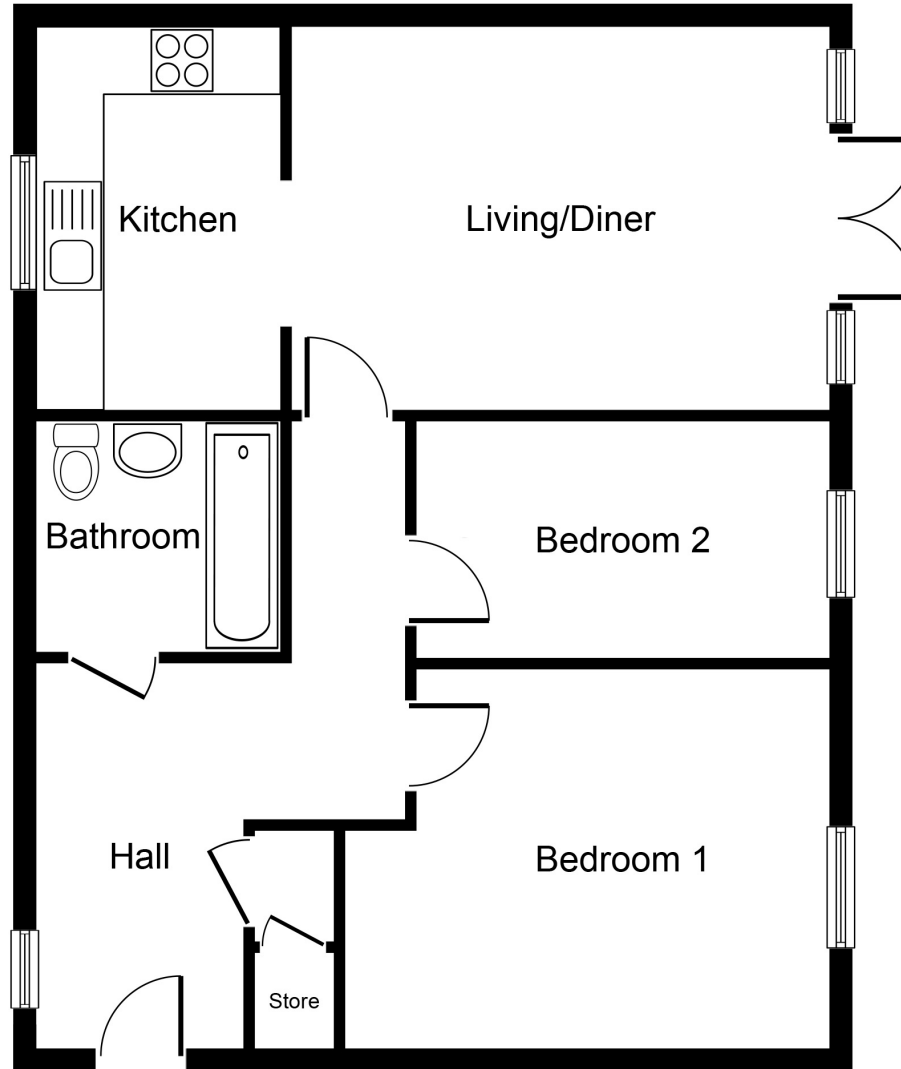
OFF ROAD PARKING FOR 1 CAR

PLEASE NOTE

These property particulars do not constitute part or all of an offer or contract. All measurements are stated for guidance purposes only and may be incorrect. Details of any contents mentioned are supplied for guidance only and must also be considered as potentially incorrect. Thomas Connolly Estate Agents advise perspective buyers to recheck all measurements prior to committing to any expense. We confirm we have not tested any apparatus, equipment, fixtures, fittings or services and it is within the prospective buyers interests to check the working condition of any appliances prior to exchange of contracts. Thomas Connolly Estate Agents has not sought to verify the legal title of the property and the buyers must obtain verification from their solicitor

THOMAS CONNOLLY

ESTATE AGENTS | LETTING AGENTS | NEW HOMES | PROPERTY MANAGEMENT



Whilst every attempt has been made to ensure the accuracy of the floor plan contained here, measurements of doors, windows, rooms and any other items are approximate and no responsibility is taken for any error, omission, or mis-statement. This plan is for illustrative purposes only and should be used as such by any prospective purchaser or tenant. The services, systems and appliances shown have not been tested and no guarantee as to their operability or efficiency can be given.

Copyright V360 Ltd 2024 | www.houseviz.com