

9 Princes Avenue, Petts Wood, Orpington, Kent, BR5 1QP

Property Images



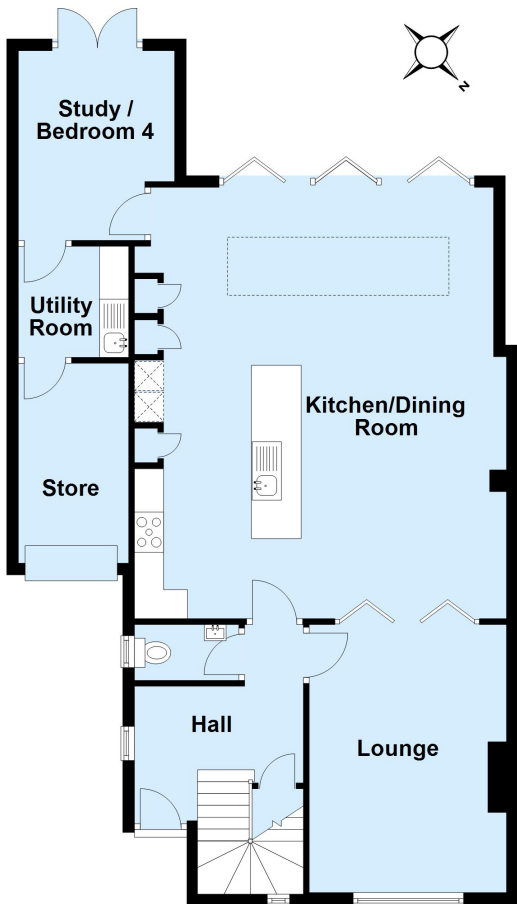






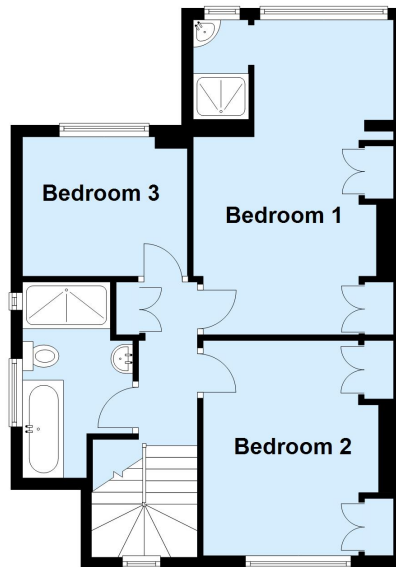
Ground Floor

Approx. 94.5 sq. metres (1017.2 sq. feet)



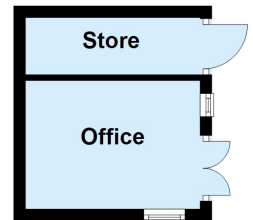
First Floor

Approx. 51.1 sq. metres (550.2 sq. feet)



Outbuilding

Approx. 9.9 sq. metres (106.2 sq. feet)



Total area: approx. 155.5 sq. metres (1673.7 sq. feet)

This plan is for general layout guidance and may not be to scale.
Plan produced using PlanUp.