



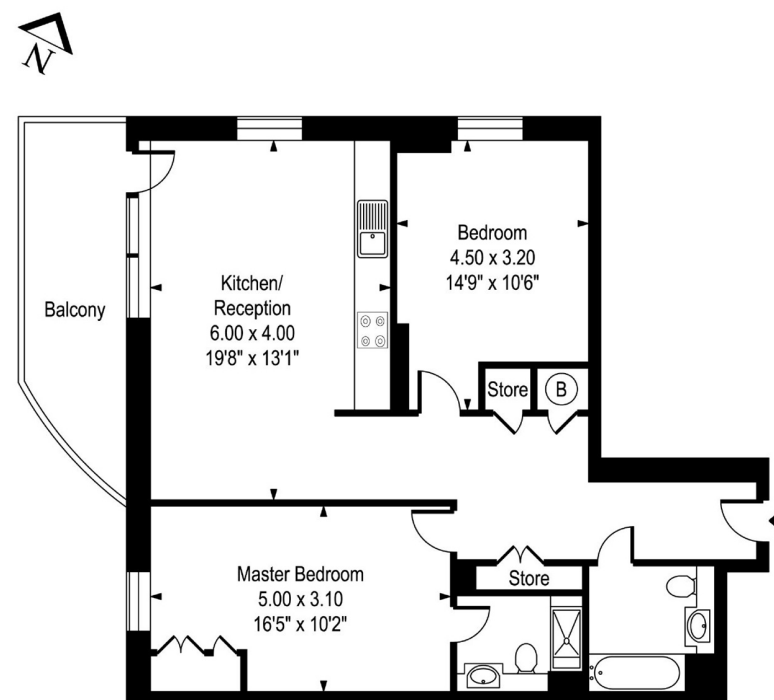
Cassia Point, 2 Glasshouse Gardens, London E20 1HU

A beautifully presented modern, dual aspect, two bedroom, two bathroom apartment with generous balcony and fine views located within sought after Cassia Point, a landmark development with 24hr concierge, residents gym and access to landscape communal gardens. Westfield shopping centre, Stratford station and the Queen Elizabeth Park are all moments away.

This impressive dual aspect apartment comprises entrance hall with storage cupboards, generous dual aspect reception room with door to private balcony providing fabulous views, dining area, stylish open plan fitted kitchen with work tops and integrated appliances, master bedroom with fitted wardrobes and en-suite shower room, double guest bedroom two and family bathroom. The apartment benefits from a high specification interior, fine views, access to 24hr concierge, residents gym and communal gardens. Westfield shopping centre, Stratford International and the Olympic Park are all moments away.

- Cassia Point E20
- Two Double Bedrooms
- Generous Private Balcony
- High Specification Interior
- Chain Free
- Dual Aspect Modern Apartment
- Two Bathrooms
- Fine Views
- 24Hr Concierge And Gym
- Excellant Location

Cassia Point
Glasshouse Gardens, Stratford, E20



Fourth Floor

Approx Gross Internal Area **812 Sq Ft - 75.42 Sq M**

Whilst every attempt has been made to ensure the accuracy of the floor plan contained here, measurements of the doors, windows, rooms and any other items are approximate and no responsibility is taken for any error, omission, or mis-statement. This plan is for illustrative purposes only and should be used as such by any prospective purchaser. The services, systems and appliances shown have not been tested and no guarantee as to their operability or efficiency can be given.





Energy Efficiency Rating		
	Current	Potential
Very energy efficient - lower running costs		
(92+) A		
(81-91) B	85	85
(69-80) C		
(55-68) D		
(39-54) E		
(21-38) F		
(1-20) G		
Not energy efficient - higher running costs		
England, Scotland & Wales	EU Directive 2002/91/EC	