



27 Flexmore Way, Langford, Bedfordshire, SG18 9PT

£430,000

Link-detached family home situated in a quiet cul-de-sac location. The accommodation has been modified to now offer four bedrooms and a re-fitted bathroom upstairs. While downstairs offers a dual aspect sitting/dining room, kitchen and utility, and a useful study/potential fifth bedroom. Outside there is a south facing rear garden with a spacious log cabin summer house, and to the front is a garage and driveway for off road parking.





- LINK-DETACHED FAMILY HOME IN QUIET CUL-DE-SAC
- FOUR/FIVE BEDROOMS
- DUAL ASPECT SITTING/DINING ROOM
- KITCHEN & UTILITY ROOM
- STUDY/BEDROOM 5
- FAMILY BATHROOM & CLOAKROOM
- SOUTH FACING GARDEN
- SPACIOUS LOG CABIN SUMMER HOUSE
- EASY ACCESS TO A1 & LOCAL TRAIN STATIONS
- EPC BAND C / COUNCIL TAX BAND D

Approximate Gross Internal Area  
 Ground Floor = 68.3 sq m / 735 sq ft  
 (Including Garage)  
 First Floor = 42.0 sq m / 452 sq ft  
 Outbuilding = 15.0 sq m / 161 sq ft  
 Total = 125.3 sq m / 1,348 sq ft

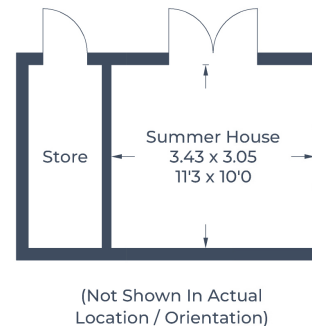
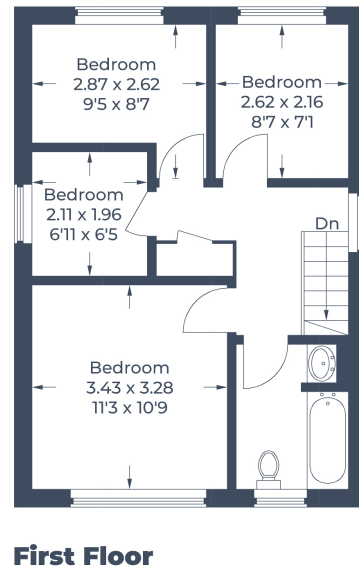
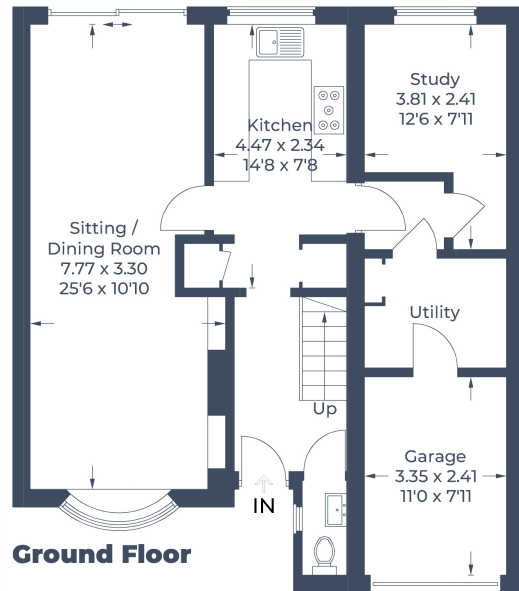


Illustration for identification purposes only,  
 measurements are approximate, not to scale.  
 © CJ Property Marketing Produced for Lane & Bennetts

