







Chatham Court is located a stones throw away from Slough High Street, where you will find all of your local amenities. The location is ideal for all commuters with Slough train station only 0.6 miles away, this station provides a direct links into central London via the Elizabeth Line.

The apartment itself is a modern TWO bedroom apartment. Internally the home consists of TWO spacious bedrooms, modern bathroom, family lounge/diner/kitchen. The property includes an allocated parking bay which is located in a secure private car park. The property is further benefitted by a long lease of 104 years.

This is the perfect first time purchase or investment buy!



Property Information

-  TWO BEDROOMS
-  ALLOCATED PARKING
-  IDEAL FIRST TIME PURCHASE OR INVESTMENT
-  104 YEAR LEASE
-  0.6 MILES TO SLOUGH STATION (ELIZABETH LINE)
-  OFFERED IN GOOD CONDITION THROUGHOUT

					
x2	x1	x1	x1	N	N
Bedrooms	Reception Rooms	Bathrooms	Parking Spaces	Garden	Garage

Location

Slough Station is one of the stations served by Crossrail - 'The Elizabeth Line' travels through London connecting Reading in the west and to Shenfield in the east meaning the heart of the West End (Bond Street) is just 30 minutes away. There are excellent road links providing easy access to the M4 and M25. A direct train link into London Paddington as available from Slough station and takes on 15 minutes!

You are surrounded by reputable local towns such as Windsor, Eton & Maidenhead which all provide access to shopping facilities, restaurants and bars.

Transport Links

NEAREST STATIONS:

- Slough (0.6 miles)
- Langley (2.4 miles)

The M4 (jct 6) is an easy commute, M40 is also easily accessible these both in turn provide access to the M25, M3 and Heathrow Airport. British Rail connections to Paddington are available from Burnham and Maidenhead.

Lease Information

From Information provided to us by the vendor, we understand the lease details to be as below:

Current remaining lease length - 104 Years

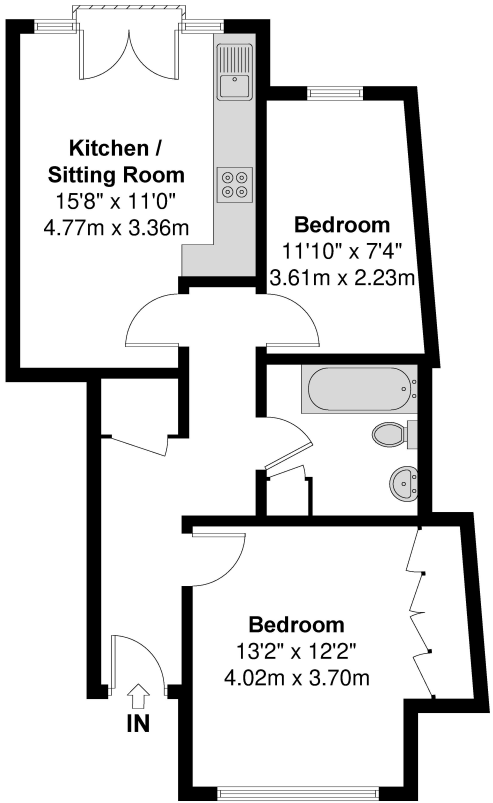
Council Tax

Band B

Floor Plan



Chatham Court
Approximate Floor Area = 50.83 Square meters / 547.12 Square feet



First Floor

Illustration for identification purposes only, measurements are approximate, not to scale.

Prospective purchasers should be aware that these sales particulars are intended as a general guide only and room sizes should not be relied upon for carpets or furnishing. We have not carried out any form of survey nor have we tested any appliance or services, mechanical or electrical. All maps are supplied by Goview.co.uk from Ordnance Survey mapping. Care has been taken in the preparation of these sales particulars, which are thought to be materially correct, although their accuracy is not guaranteed and they do not form part of any contract.

