



Estate Agents and Solicitors

22 Pittville Street, Portobello, Edinburgh, EH15 2BY

Three-Bedroom, Beachfront, End-Terrace Villa with Superb Views

Up to date price and viewing info at mov8realestate.com/property

ēspc rightmove  **Zoopla**
find your happy

Property Description

Rarely available, flexible, three-bedroom, beachfront, end-terrace villa, forming part of a period, stone-built terrace. Located on a quiet side street, with a private driveway and garden, adjacent to the Promenade, in the heart of Portobello.

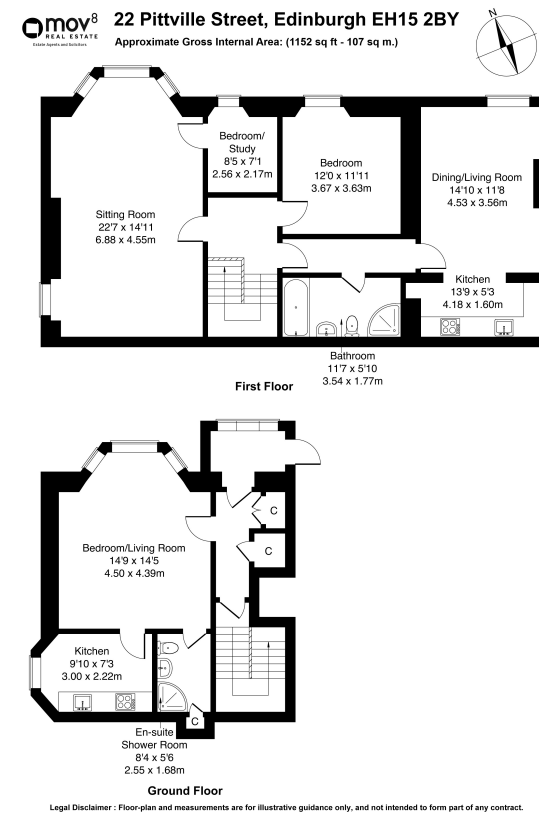
Comprises an entrance porch, hall, a sitting room, two kitchens, three flexible bedrooms, a shower room and a family bathroom.

Set over two storeys, enjoying exceptional, seafront views and offering a potential, self-contained 'granny flat' layout.

There are generous room sizes, tall ceilings and period features, modern fitted kitchens and bathrooms and hardwood flooring for the upper floor. In addition, gas central heating, Morso wood-burning stoves, dual-aspect rooms and superb storage provision, including a loft and a cellar space.

A generous entrance porch offers ample space for outerwear and opens into the ground-floor entrance hall, with period tiled flooring and two built-in store cupboards. Set to the front, on the ground floor, is the potential self-contained living space or master bedroom, with a large bay window, period cornice work and modern flooring. Leading off the front-facing room, is a kitchen, with a side aspect window and fitted units, including stone-effect worktops, a fridge/freezer, a washing machine and an integrated electric oven and hob. Set internally is a generous en-suite shower room.

On the first floor is an impressive, dual-aspect sitting room, featuring a bay window, with seafront views, a fireplace with a wood-burning stove, and period cornice work. Leading off the living room is a flexible single/guest bedroom or office. A double bedroom also enjoys seafront views, from a tall window, and features carpeted flooring and a pendant light fitting. On the east-facing corner of the upper floor is a second, dual-aspect public room, offering a family/dining space, with further superb views and a feature fireplace, with a wood-burning stove. Set to the rear of the room, a high-quality fitted kitchen includes a further range of appliances. Completing the accommodation, a spacious and stylish family bathroom is fitted with a contemporary three-piece suite and a separate shower cubicle.



Area Description





Portobello lies on the eastern edge of Edinburgh and is renowned for its extensive sandy beach and seafront promenade. The area has a bustling high street, with a good range of independent retailers including coffee shops, a bookshop, a butcher, a fishmonger, a bakery, a greengrocer, an Aldi, and a Morrisons superstore on Portobello Road; whilst The Jewel and Fort Kinnaird offer further large supermarkets and a range of major high-street names, restaurants and a multi-screen cinema.

Frequent bus services are available from the High Street, and the nearby Brunstane rail station offers further commuting options, whilst the A1 and the city bypass are also easily accessed. There are a number of parks and golf courses, with the extensive Holyrood Park, Arthur's Seat, Duddingston Loch and Figgate Park also close by; whilst Portobello Leisure Centre offers swimming pools, a spa, Turkish baths, a gym, a fitness studio and a soft play.





Our Services

-  Free pre-sale property valuations
-  Great value fixed estate agency fees
-  Extensive buyer matching database
-  Purchase and sale conveyancing

Contact Us

0345 646 0208

sales@mov8realestate.com

www.mov8.com

Head Office

6 Redheughs Rigg, Edinburgh, EH12 9DQ

Glasgow Office

77 Renfrew Street, Glasgow, G2 3BZ



Estate Agents and Solicitors



These particulars do not form part of any contract and the statements or plans contained herein are not warranted nor are they to scale. All descriptions, dimensions, areas, reference to condition and necessary permissions for use and occupation and other details are given in good faith, and are believed to be correct, but any prospective purchaser should not rely on them as statements or representations of fact, and any prospective purchaser must satisfy themselves by inspection or otherwise as to the correctness of each of them. The Seller shall not be bound to accept the highest or any offer nor to accept a full offer of the Fixed Price where this is applicable. Approximate measurements have been taken by sonic device and measurements are most often taken to the widest point of any room or space. Services and appliances have not been tested for efficiency or safety and no warranty is given as to their compliance with any Regulations. Offers should be made using the Combined Standard Clauses.