

## 50 Surrenden Road

Folkestone  
CT19 4EA

**£525,000 FREEHOLD**

FOR SALE WITH BURNAP + ABEL... Welcome to this stunning 4-bedroom semi-detached house located on Surrenden Road, Folkestone. Upon entering, you will be greeted by a spacious lounge/diner, ideal for entertaining guests or relaxing with family. The modern kitchen is perfect for the aspiring chef, complete with a utility room and ground floor WC for added convenience. The second reception room can double up as a 5th bedroom for the more larger families. Upstairs, you will find four well-appointed bedrooms, including a luxurious master bedroom with an en-suite bathroom. The family bathroom is perfect for accommodating everyone's needs. Outside, the property boasts off-road parking for two cars and a large rear garden, providing plenty of outdoor space for summer BBQs or children to play in. Don't miss out on the opportunity to make this exquisite home yours. Book your viewing today!



**Porch**

**Lounge/Dining Room**

22' 4" x 15' 8" (6.81m x 4.78m)

**Reception Room 2**

12' 11" x 12' 0" (3.94m x 3.66m)

**Kitchen**

12' 0" x 10' 11" (3.66m x 3.33m)

**W.C**

**First Floor Landing**

**Bedroom One**

12' 11" x 11' 2" (3.94m x 3.40m)

**En-Suite**

**Bedroom Two**

12' 0" x 11' 0" (3.66m x 3.35m)

**Bedroom Three**

12' 1" x 10' 10" (3.68m x 3.30m)

**Bedroom Four**

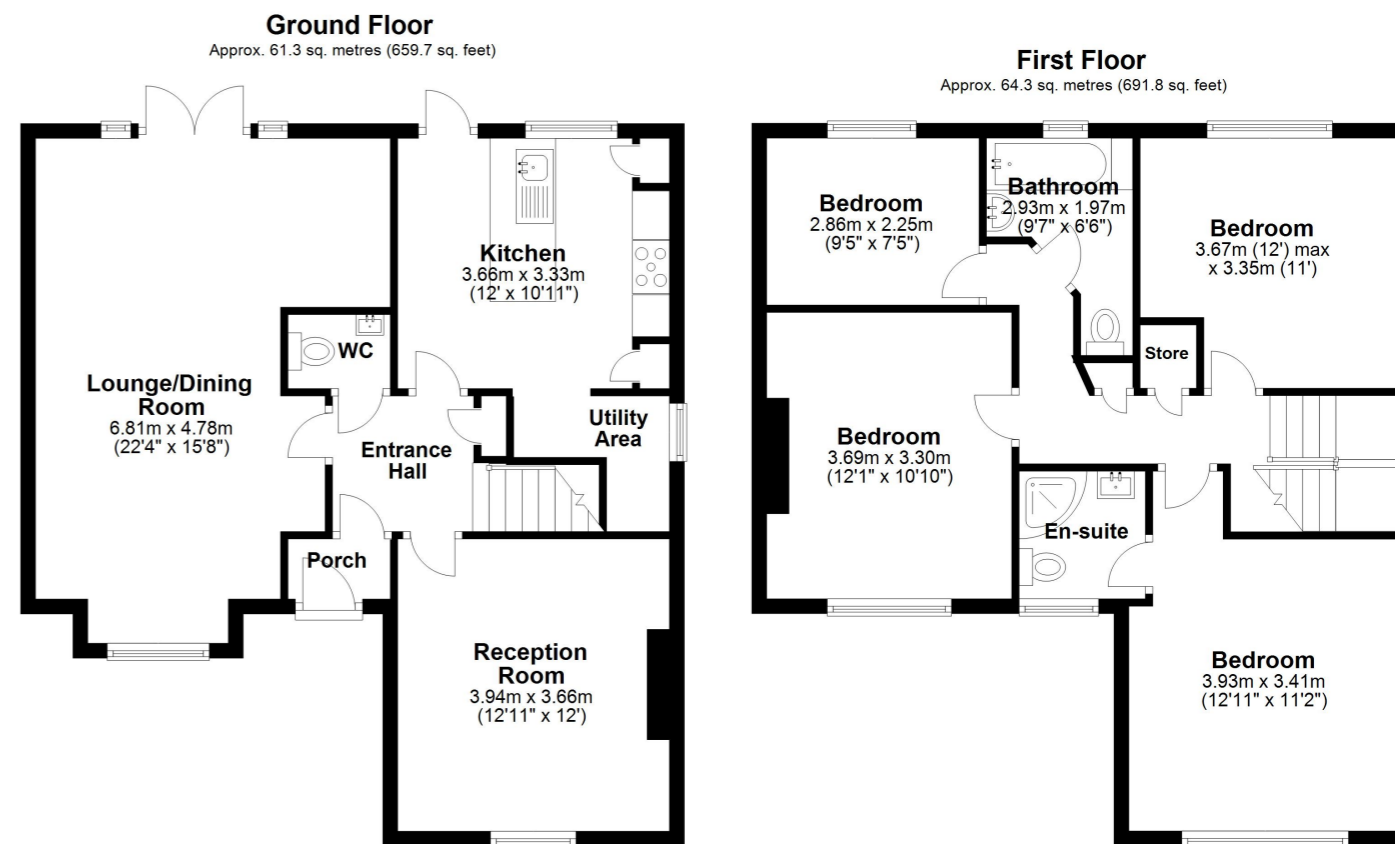
9' 5" x 7' 5" (2.87m x 2.26m)

**Bathroom**

9' 7" x 6' 6" (2.92m x 1.98m)

**Rear Garden**

**Off Road Parking**



Total area: approx. 125.6 sq. metres (1351.5 sq. feet)

Whilst every attempt has been made to ensure the accuracy of the floor plan contained here, measurements of doors, windows, rooms and any other items are approximate and no responsibility is taken for any error, omission or mis-statement. This plan is for illustrative purposes only and should be used as such by any prospective purchaser.  
Plan produced using PlanUp.

