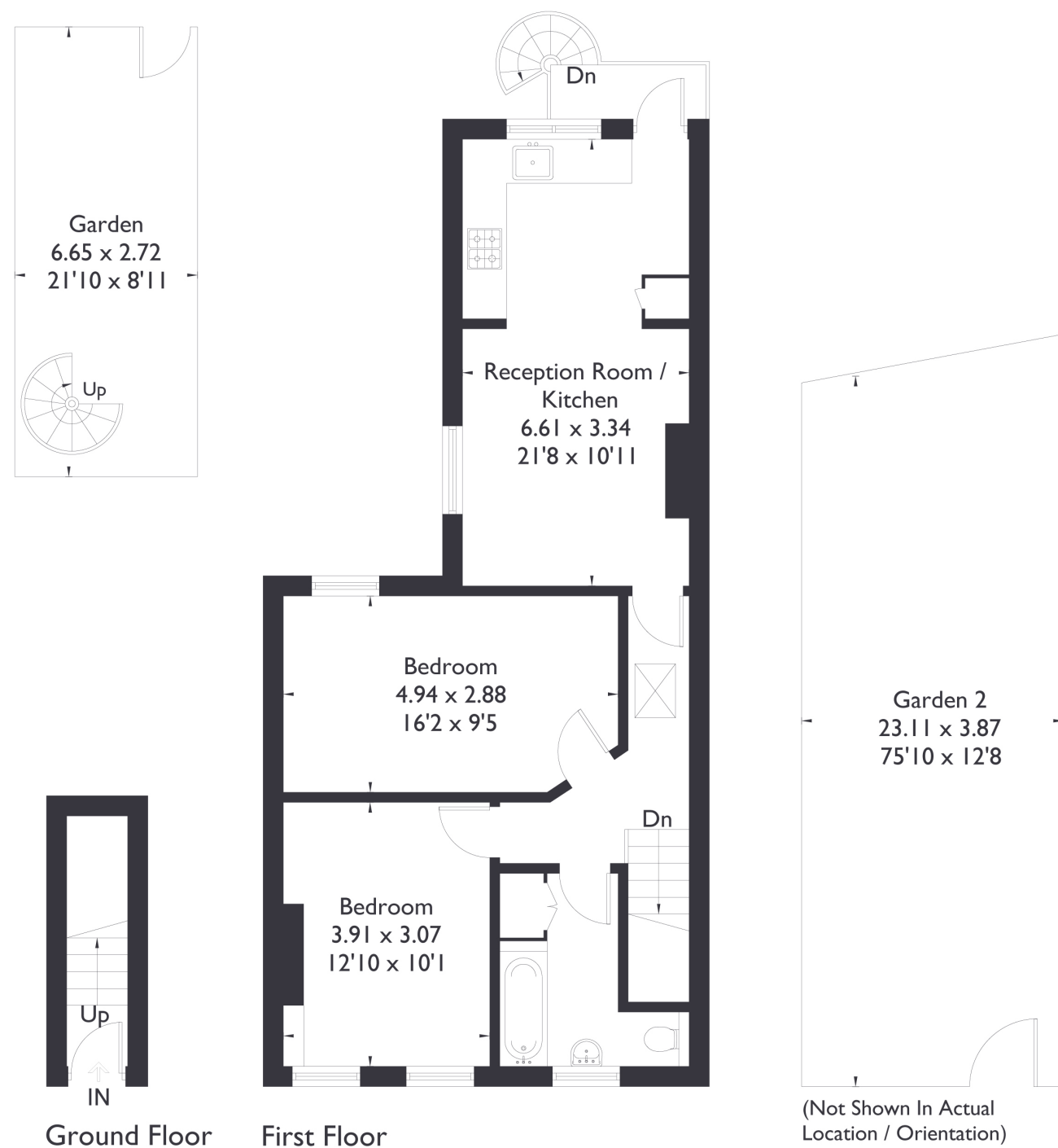


Grosvenor Road, W7

Approximate Floor Area = 67.8 sq m / 730 sq ft



2 BEDROOM FLAT

Grosvenor Road, W7

£495,000

Welcome to this two bedroom, one bathroom first floor flat.

This delightful property features two generously sized double bedrooms, a modern family bathroom, and a spacious open-plan kitchen, living, and dining area that flows seamlessly into a private garden. With its stunning high ceilings and abundant natural light, the flat offers a bright and airy ambiance.

FEATURES

- Chain Free
- Price Includes Half Ownership of Freehold
- Two Bedrooms
- One Bathroom
- Open Plan Kitchen/Dining
- West Ealing Station (Elizabeth Line)
- Oaklands Primary School/ Elthorne Park High School (Ofsted Outstanding Schools)
- Potential To Extend (STPP)
- EPC Rating E



2 BEDROOM FLAT

Grosvenor Road, W7

There's also potential to expand into the loft, providing an exciting opportunity to create a third bedroom.

Conveniently located within the catchment area of the highly regarded Oaklands Primary School, this home is just a short distance from West Ealing Station, offering easy access to the Elizabeth Line for swift connections across the city. EPC Rating E.

