

Rosewood 4 Wildflower Close

HAWKINGE, Folkestone
CT18 7UU

£699,995 FREEHOLD

FOR SALE WITH BURNAP + ABEL... Welcome to this beautiful 4 bedroom link detached house located on the picturesque Fernfield Lane in Hawkinge. Situated in the stunning new development "Wildflower Meadows", this home has been finished to a very high standard, perfect for those who appreciate modern aesthetics and luxury living. As you step inside, you'll be greeted by spacious rooms and contemporary finishes throughout. The warm air heat pump ensures efficient heating all year round, keeping you comfortable in any season. With a garage and driveway, parking will never be an issue for you or your guests. Imagine starting each day waking up to the serene surroundings of Fernfield Lane, with the promise of peaceful walks through nature just steps from your front door. Don't miss out on this opportunity to own a truly exceptional property in one of Hawkinge's most sought-after locations. Schedule a viewing today and make this dream home yours before it's gone!



Entrance Hall

Lounge

24' 0" x 13' 6" (7.32m x 4.11m)

Kitchen/Diner

24' 5" x 15' 3" (7.44m x 4.65m)

Snug

12' 8" x 11' 2" (3.86m x 3.40m)

Utility Room

12' 6" x 6' 1" (3.81m x 1.85m)

W.C

First Floor Landing

Bedroom One

12' 3" x 11' 2" (3.73m x 3.40m)

En-Suite

Bedroom Two

12' 3" x 10' 2" (3.73m x 3.10m)

En-Suite

Bedroom Three

12' 3" x 8' 11" (3.73m x 2.72m)

Bedroom Four

11' 5" x 10' 3" (3.48m x 3.12m)

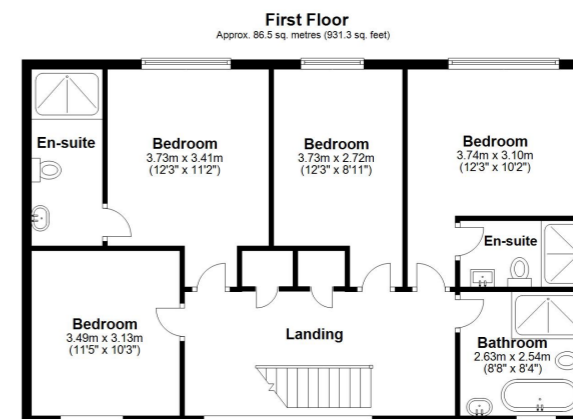
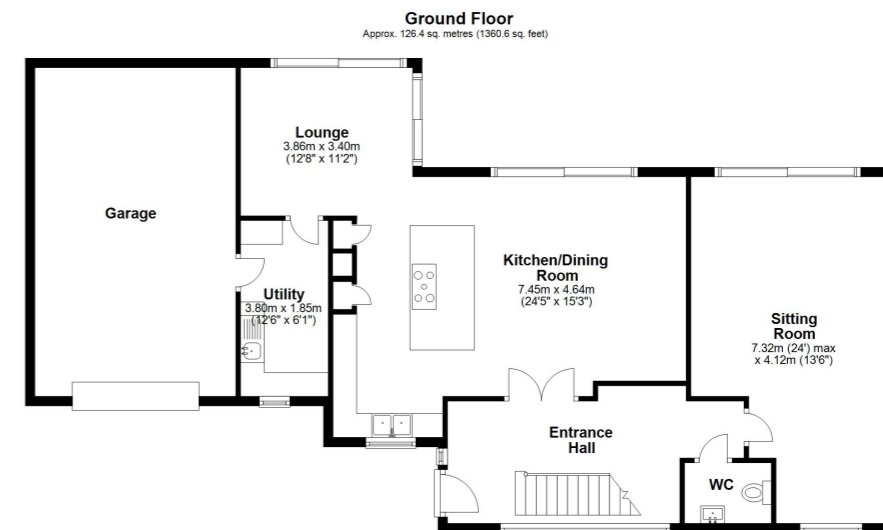
Family Bathroom

8' 8" x 8' 4" (2.64m x 2.54m)

Garage

Off Road Parking

Rear Garden



Total area: approx. 212.9 sq. metres (2291.9 sq. feet)

Whilst every attempt has been made to ensure the accuracy of the floor plan contained here, measurements of doors, windows, rooms and any other items are approximate and no responsibility is taken for any error, omission or mis-statement. This plan is for illustrative purposes only and should be used as such by any prospective purchaser.
Plan produced using PlanUp.

