



39 Elizabeth Gardens

Isleworth, TW7 7BD



Telephone: 02085707900

Email: gavin@bluestateagents.co.uk



Elizabeth Gardens

Isleworth, TW7 7BD

Blue Estate Agents bring to market, with no chain and as sole selling agents, this purpose built, first floor one bedroom apartment, located within a private gated development in Isleworth. Boasting a healthy lease, this property comprises of an entrance hallway which leads you to a airy and bright open plan lounge/dining area with an attached kitchenette. In addition, there is a large double bedroom with fitted wardrobes and 'Jack and Jill' bathroom suite. Further benefits include, gas central heating, double glazed windows and an allocated parking bay. Potential suitors can also benefit with access to the private garden within the development. Locally, there are an array of transport links within a short walk from the property, including Isleworth Mainline Station (0.7 miles) , Richmond Underground Station (1.4 miles) and ample bus links. Syon Park, River Thames, Twickenham Stadium and Heathrow Airport can also been found is the local vicinity. An ideal property for those looking to get on the property ladder or as an investment property. Contact Blue Estate agents to book a viewing today.





Lounge

3.65m x 5.46m (12' 0" x 17' 11")

Kitchen

2.43m x 2.33m (8' 0" x 7' 8")

Bathroom

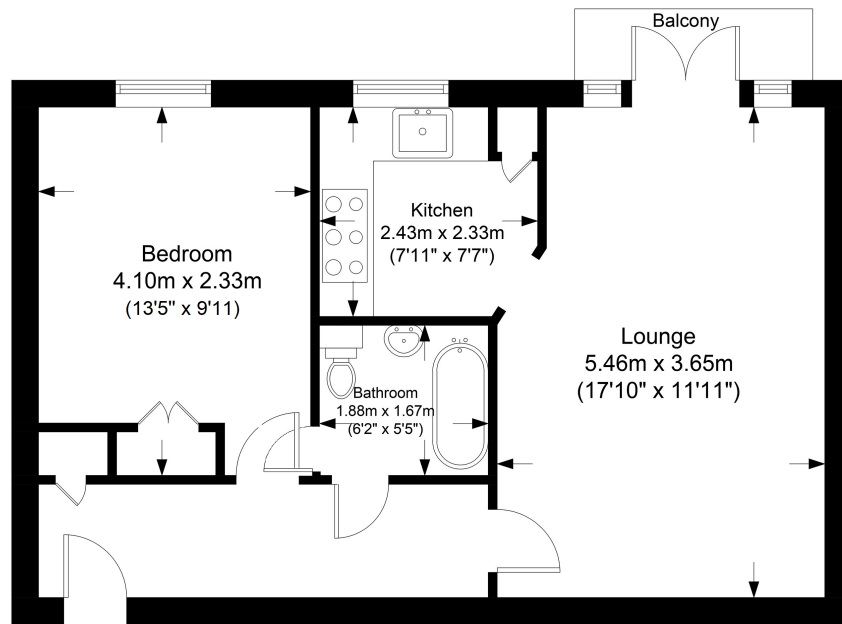
1.88m x 1.67m (6' 2" x 5' 6")

Bedroom

4.10m x 2.33m (13' 5" x 7' 8")

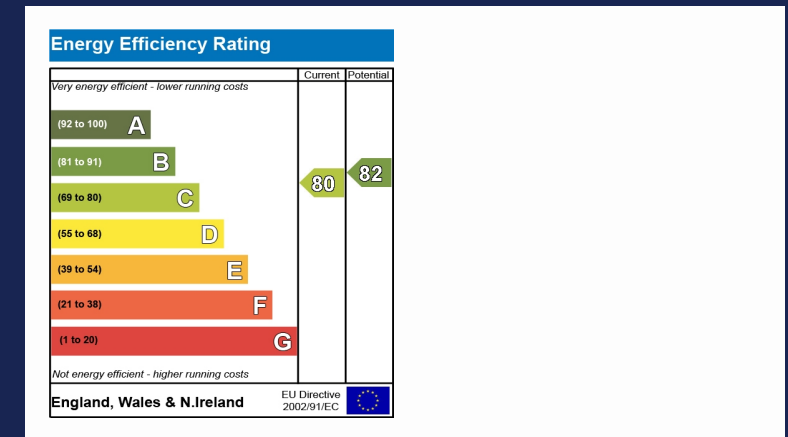


Approximate Gross Internal Floor Area : 47.83 sq m / 514.83 sq ft



Ground Floor

Illustration purposes only. All measurements are approximate.



Blue Estate Agents
315 Vicarage Farm Road, Hounslow
Greater London
TW5 0DR