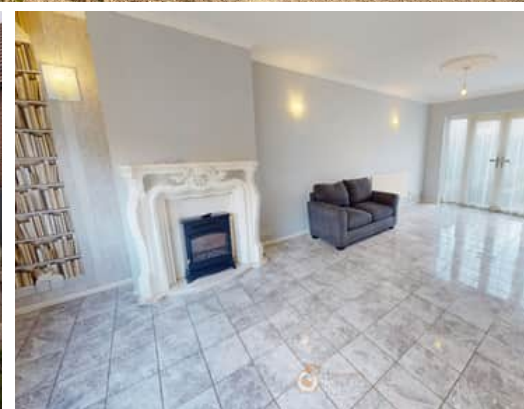


3 Bedroom(s), Semi-Detached House, Freehold

Lonsdale Avenue, Intake, Doncaster.



- 3D Virtual Tour Available
- Three Bedroom Semi Detached Family Home
- Kitchen Diner
- Modern Family Bathroom
- Driveway for Off Road Parking

- No Chain
- Spacious Lounge
- Ground Floor W/C
- Rear Enclosed Garden with Storage
- Local Amenities, Schools and Transport Links

£185,000
For Sale

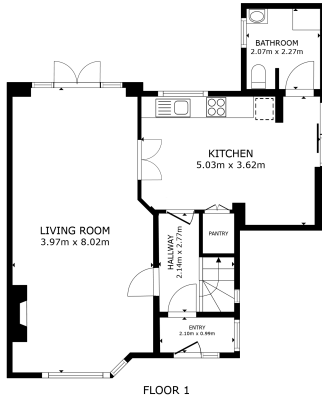
Book your viewing today Tel: 01302 247754

Owner's View

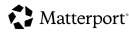
Located on the popular Lonsdale Avenue in Intake, Doncaster, this well-proportioned three-bedroom semi-detached home is offered to the market with no onward chain, making it an ideal choice for first-time buyers, families, or investors alike. The property boasts a spacious and inviting lounge, perfect for relaxing or entertaining, alongside a kitchen diner that provides ample space for both cooking and family dining. A convenient ground floor W/C adds to the practicality of the home. Upstairs, there are three well-sized bedrooms served by a family bathroom, offering comfortable accommodation for growing families. Externally, the property benefits from a rear enclosed garden with useful storage space, ideal for outdoor enjoyment and additional practicality. To the front, a driveway provides off-road parking.

First Floor

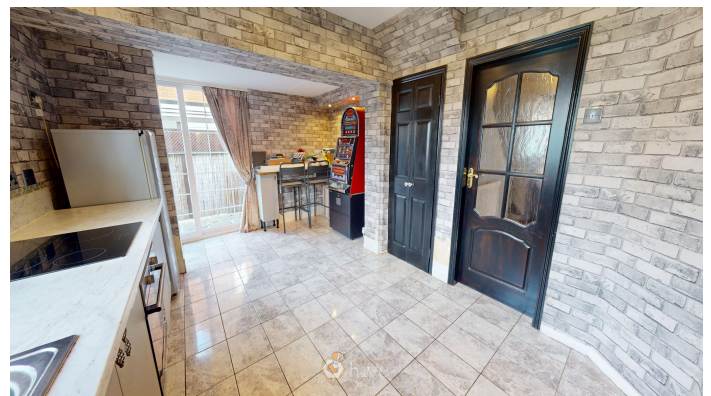
Floor Plan



GROSS INTERNAL AREA
FLOOR 1: 64.8 m² FLOOR 2: 48.5 m²
TOTAL: 113.3 m²
SIZES AND DIMENSIONS ARE APPROXIMATE, ACTUAL MAY VARY.



Kitchen Diner



Porch



Hallway



Lounge

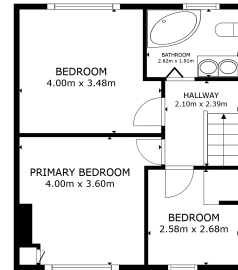


W/C



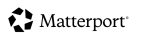
First Floor

Floor Plan



FLOOR 2

GROSS INTERNAL AREA
 FLOOR 1 62.6 m² FLOOR 2 44.5 m²
 TOTAL: 107.1 m²
SIZES AND COVERED AREA APPROXIMATE. ACTUAL MAY VARY.



Master Bedroom



Bedroom



Bedroom



Family Bathroom



Externals

Front Aspect



Rear Garden



Property Information

Council Tax Band - A

Utilities - Mains Gas, Mains Electricity, Mains Water

Water Meter - Yes

Tenure - Freehold

Solar Panels - No

Space Heating System - Gas Boiler with radiators

Approximate Heating System Installation Date - 26/09/2013

Water Heating System - Gas boiler (Combi)

Approximate Water Heating Installation Date - 26/09/2013

Boiler Location - Utility room

Approximate Electrical System Installation Date -

Permanent Loft Ladder - Yes

Loft Insulation - Yes

Loft Boarded out - Yes

Whilst every effort is made to ensure that the information contained in these particulars is reliable, they do not constitute or form part of an offer or any contract. The Property Hive accept no liability for the accuracy of the contents, and therefore they should be independently verified by prospective buyers or tenants before agreeing an offer. All measurements provided are approximate and should be verified before exchange of contracts. No appliances, fixtures or fittings have been tested and should be checked by the buyer before exchange of contracts to ensure they are in good working order.



We make it happen.

Tel: 01302 247754 Email: info@thepropertyhive.co.uk Web: www.thepropertyhive.co.uk

Energy Performance Certificate