



10 Garfield, Langford, Biggleswade, Bedfordshire, SG18 9NG

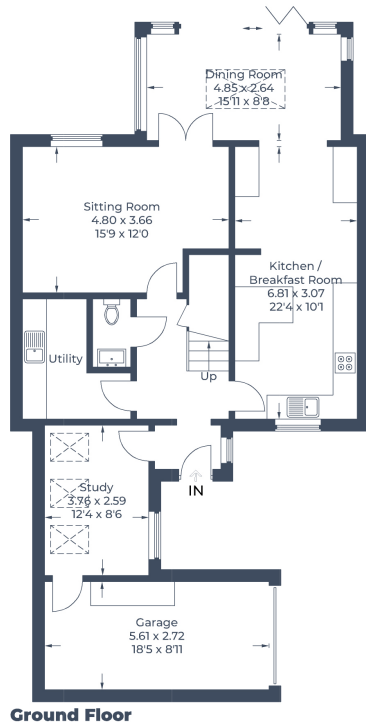
£650,000

Situated in this small select courtyard is this beautifully extended detached home offering bright and spacious accommodation over three floors. The ground floor has a welcoming hallway with a study/playroom with feature vaulted ceiling, also there is a quite sitting room and the real feature of the house the fully fitted kitchen/breakfast room and dining room which extends into the garden with bi-fold doors and roof lantern. Upstairs are 5 double bedrooms and three bathrooms completing this ideal family home. Outside is a west facing garden and off-road parking is provided by a driveway and garage. Viewing essential

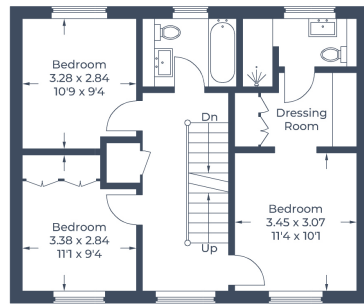


- EXTENDED FIVE BEDROOM DETACHED
- OVER 2,000 SQ FT OF ACCOMMODATION OVER THREE FLOORS
- BEUTIFULLY PRESENTED THROUGHOUT
- RE-FITTED KITCHEN + BATHROOMS TO A HIGH SPECIFICATION
- STUDY + SITTING ROOM + DINING ROOM
- MASTER BEDROOM WITH DRESSING ROOM + EN-SUITE
- FIVE DOUBLE BEDROOMS + TWO EN-SUITES + FAMILY BATHROOM
- WEST FACING GARDEN
- GARAGE + DRIVEWAY + ELECTRIC CHARGING POINT

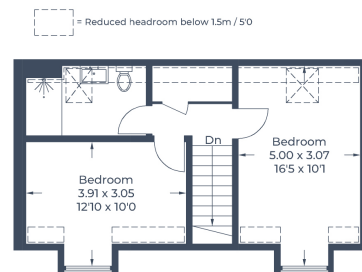
Approximate Gross Internal Area
 Ground Floor = 98.9 sq m / 1,064 sq ft
 First Floor = 56.8 sq m / 611 sq ft
 Second Floor = 38.5 sq m / 414 sq ft
 Total = 194.2 sq m / 2,089 sq ft



Ground Floor



First Floor



Second Floor

Illustration for identification purposes only,
 measurements are approximate, not to scale.
 © CJ Property Marketing Produced for Lane & Bennetts

