

2 Tudor Drive, Beckington, BA11 6AR

COOPER
AND
TANNER



£675,000 Freehold

An attractive, double fronted family home with beautiful gardens, positioned within the highly sought after village of Beckington, between Frome and Bath.

2 Tudor Drive Beckington, BA11 6AR

 4  1  2 EPC B

£675,000 Freehold

DESCRIPTION

Set within a popular development in the centre of Beckington, this attractive family house has the aesthetics of an older building whilst enjoying the energy efficiencies, guarantees and open plan living of a new build, the perfect combination.

The front door opens into a spacious and light entrance hall which provides access into the living room, the kitchen/dining room, the office and stairs rise to the first floor. The living room is a cosy space with a large window to the front whilst a fireplace provides a great focal point. The kitchen/dining room is a fabulous open planned, naturally light room with views onto the gardens and double doors leading onto the patio, perfect for al-fresco dining and entertaining. There are a range of wall and base units, integrated appliances, a breakfast bar and space for a large table and chairs. There is also a home office, a utility room and a downstairs cloakroom.

On the first floor there are four double bedrooms and a well-appointed family bathroom. The master bedroom is a great size with fitted wardrobes and an en-suite shower room.

OUTSIDE

To the left hand-side of the house is a driveway providing parking for two vehicles in front of the detached garage which includes power and light.

To the front of the house is a pretty little garden enclosed by low stone wall and hedge.

The gardens predominantly lie to the rear of the house and include a patio seating area adjoining the double doors from the kitchen. Beyond is a good size level lawn that is fully enclosed, bordered by plants and shrubs and providing an excellent child and pet friendly space to enjoy.

LOCATION

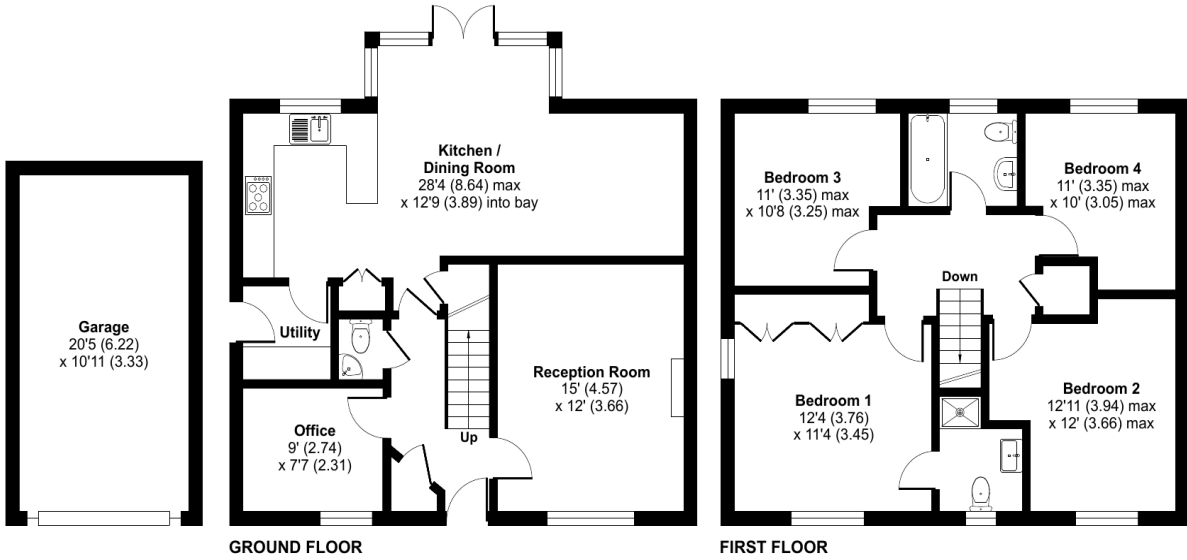
The thriving village of Beckington offers a lively Anglican church, two public houses, the Mes Amis café/deli, tennis, football and cricket clubs, village hall, village school and Springmead private day nursery and prep school. Recreational facilities locally are good with Babington House, Orchardleigh Golf club, fishing, shooting and beautiful open countryside all on the doorstep. The excellent farmers' co-operative, Mole Valley Farmers, where you can purchase a huge selection of goods and the award winning Whiterow Farm Shop, with a first-class butchery, fishmonger, bakery, and delicatessen are both nearby. The historic market town of Frome is four miles away and features the highest number of listed buildings in Somerset. Longleat House and safari park and its many attractions are nearby. Private schools are to be found in Bath, Bruton, Castle Cary, Cranmore, Glastonbury, Street, Warminster, and Wells.





Tudor Drive, Frome, BA11

Approximate Area = 1415 sq ft / 131.5 sq m
 Garage = 223 sq ft / 20.7 sq m
 Total = 1638 sq ft / 152.2 sq m
 For identification only - Not to scale



RICS Certified Property Measurer Floor plan produced in accordance with RICS Property Measurement Standards incorporating International Property Measurement Standards (IPMS2 Residential). © nitchecom 2023. Produced for Cooper and Tanner. REF: 1016816



FROME OFFICE
 Telephone 01373 455060
 6 The Bridge, Frome, Somerset, BA11 1AR
frome@cooperandtanner.co.uk



Important Notice: These particulars are set out as a general outline only for the guidance of intended purchasers and do not constitute, nor constitute part of, an offer or contract. All descriptions, dimensions, reference to condition and necessary permissions for use and occupation, warranties and other details are given without responsibility and any intending purchasers should not rely on them as statements or representations of fact but must satisfy themselves by inspection or otherwise as to the correctness of each of them.

