

Flat 1, 8 Longfleet Road, Poole, Dorset, BH15 2HY

£240,000 Leasehold

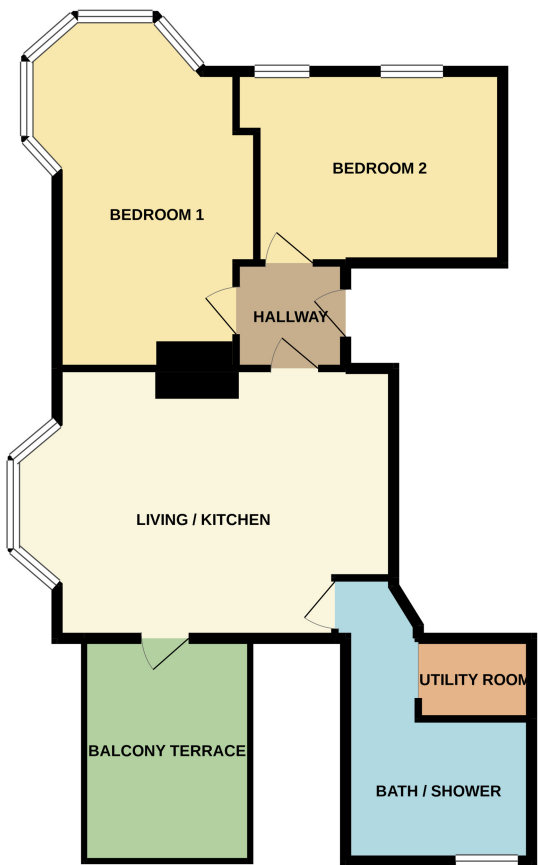
- An Impressive Two Double Bedroom First Floor Apartment
- Luxury Newly Fitted Kitchen With Integrated Appliances & Marble Effect Work Surfaces
- Spacious Balcony/Sun Terrace Offering A Pleasant Aspect
- Allocated Off Road Parking
- Completion Of The Refurbishment Is Anticipated Mid January 2022
- Fully Refurbished To A High Standard
- Luxury Newly Fitted Marble Effect Fully Tiled Bathroom
- Holiday Lets Permitted
- New 125 Year Lease
- Separate Utility Space For Washing Machine & Tumble Dryer With Work Surface

Flat 1, 8 Longfleet Road, Poole, Dorset, BH15 2HY

£240,000 Leasehold

A FULLY REFURBISHED, TWO DOUBLE BEDROOM FIRST FLOOR APARTMENT WITH ALLOCATED PARKING, NEW 125 YEAR LEASE, LARGE BALCONY/TERRACE, Spacious Living Room with feature bay window, luxury newly fitted Kitchen and Bathroom, short term lets permitted!

FIRST FLOOR
725 sq.ft. (67.4 sq.m.) approx.



TOTAL FLOOR AREA : 725 sq.ft. (67.4 sq.m.) approx.
Whilst every attempt has been made to ensure the accuracy of the floorplan contained here, measurements of doors, windows, rooms and any other items are approximate and no responsibility is taken for any error, omission or mis-statement. This plan is for illustrative purposes only and should be used as such by any prospective purchaser. The services, systems and appliances shown have not been tested and no guarantee as to their operability or efficiency can be given.
Made with Metropix ©2021

PLEASE NOTE: The measurements that have been quoted are approximate and strictly for guidance only. All fittings, fixtures, services and appliances have not been tested and no guarantee can be given that they are in working order. The particulars are believed to be correct but their accuracy is not guaranteed and they do not constitute an offer or form part of a contract. The images displayed are for information purposes only and it cannot be inferred that any item shown will be included in the property.

