

32 Juniper Way

HAWKINGE, Folkestone

CT18 7TU

£290,000 FREEHOLD

FOR SALE WITH BURNAP + ABEL....Burnap and Abel are delighted to introduce this exclusive Pentland build property located in the sought after area of Juniper Way in Hawkinge. The property is situated close to local amenities and the accommodation comprises lounge, fully fitted kitchen, downstairs W.C, two double bedrooms and a family bathroom. Additional benefits include a rear garden, off road parking, gas central heating (including underfloor heating to the ground floor and double glazing. For your chance to view call sole agent Burnap + Abel now on 01303 258590.



Entrance Hall

Lounge/Dining Room

13' 6" x 13' 3" (4.11m x 4.04m)

W.C

Kitchen

11' 10" x 8' 5" (3.61m x 2.57m)

First Floor Landing

Bedroom One

11' 4" x 10' 0" (3.45m x 3.05m)

Family Bathroom

10' 0" x 6' 5" (3.05m x 1.96m)

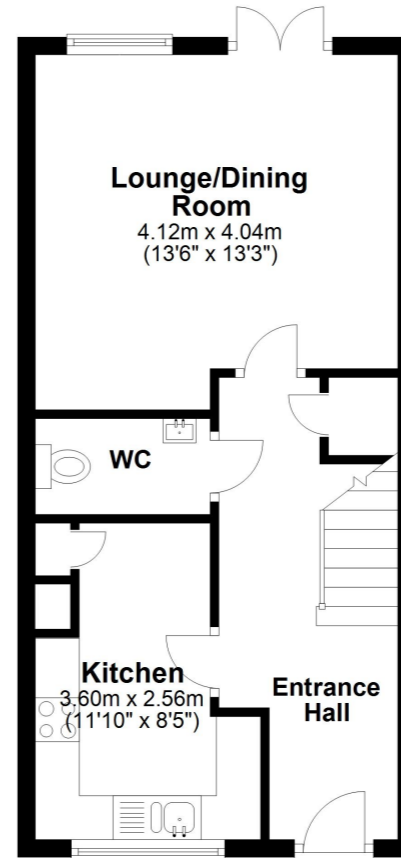
Bedroom Two

13' 6" x 11' 4" (4.11m x 3.45m)

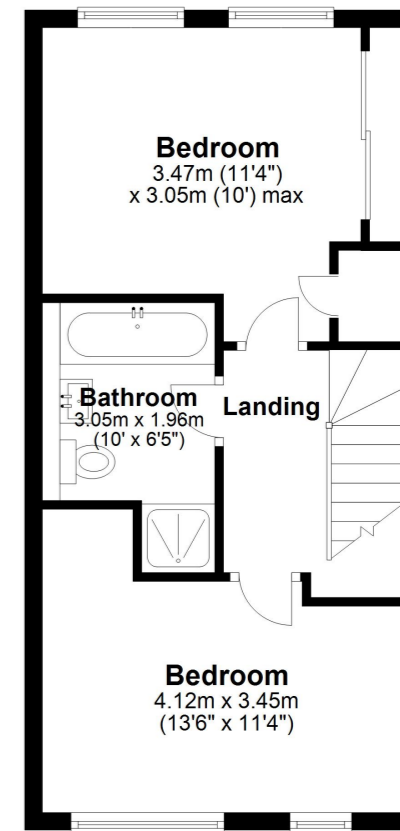
Rear Garden

Off Road Parking

Ground Floor
Approx. 37.3 sq. metres (401.4 sq. feet)



First Floor
Approx. 37.4 sq. metres (402.3 sq. feet)



Whilst every attempt has been made to ensure the accuracy of the floor plan contained here, measurements of doors, windows, rooms and any other items are approximate and no responsibility is taken for any error, omission or mis-statement. This plan is for illustrative purposes only and should be used as such by any prospective purchaser.
Plan produced using PlanUp.

