

Stanfords

— sales & lettings —



£1,850 pcm Leasehold

2 bedroom flat

Manor Park

Hither Green

Read all about it...

A stunning two-bedroom flat on Manor Park, a sought after street in Hither Green. Ideally situated just 0.2 miles from Hither Green Station, providing a range of commuter services directly into Central London, and in close proximity to a variety of local amenities, including independent shops, cafes and restaurants. The popular Manor House Gardens are also just a short walk away, with green open spaces, a lake, tennis courts, cafe and playground - perfect for enjoying those warm summer days.

Internally this flat is beautifully presented throughout with a stylish mix of modern decor and period features. Set on the ground floor of a period conversion and accessed via its own front door, the property comprises a large lounge, modern kitchen and shower room, a double bedroom and a second smaller bedroom - an ideal nursery or home office space. Outside the property benefits from a well presented rear garden and off-street parking to the front.

Offered unfurnished and available from 12th August 2024. Call now to view!

GROUND FLOOR

Lounge

17' 10" x 10' 10" (5.44m x 3.30m)

Double glazed window, pendant ceiling light, fireplace, alcove shelving, wall radiator, wood flooring.

Kitchen

9' 10" x 9' 2" (3.00m x 2.79m)

Double glazed window and door to garden, ceiling spotlights, fitted kitchen units, sink with mixer tap and drainer, integrated dishwasher, oven and grill, gas hob and extractor hood, washer/dryer, vinyl flooring.

Bedroom

13' 6" x 13' 3" (4.11m x 4.04m)

Double glazed windows, pendant ceiling light, fireplace, fitted wardrobes, radiator, wood flooring.

Bedroom

9' 3" x 5' 0" (2.82m x 1.52m)

Double glazed sash window, pendant ceiling light, radiator, fitted carpet.

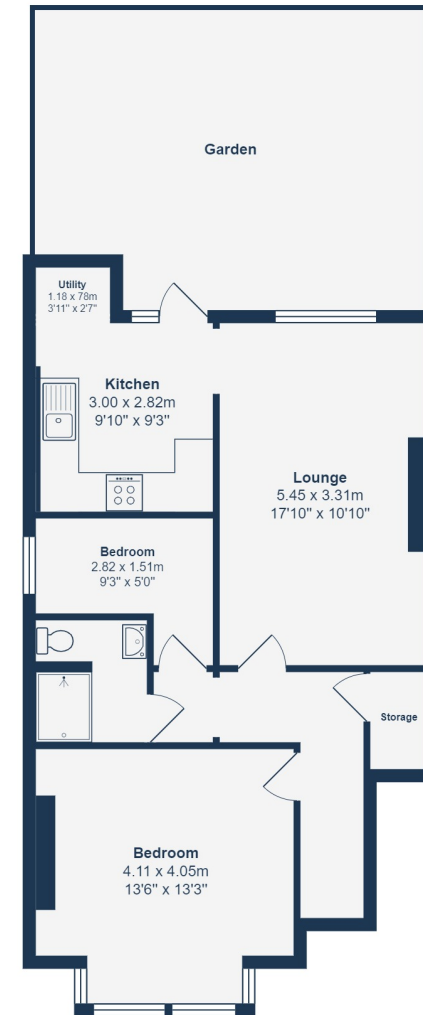
Shower Room

Pendant ceiling light, walk-in shower, washbasin on vanity unit, WC, heated towel rail, tiled flooring.

OUTSIDE

Garden

Raised wood decking to the front leading to lawn and summer house.



Ground Floor

Total Area: 62.1 m² ... 669 ft² (excluding garden)

All measurements are approximate and for display purposes only

Like what you see?

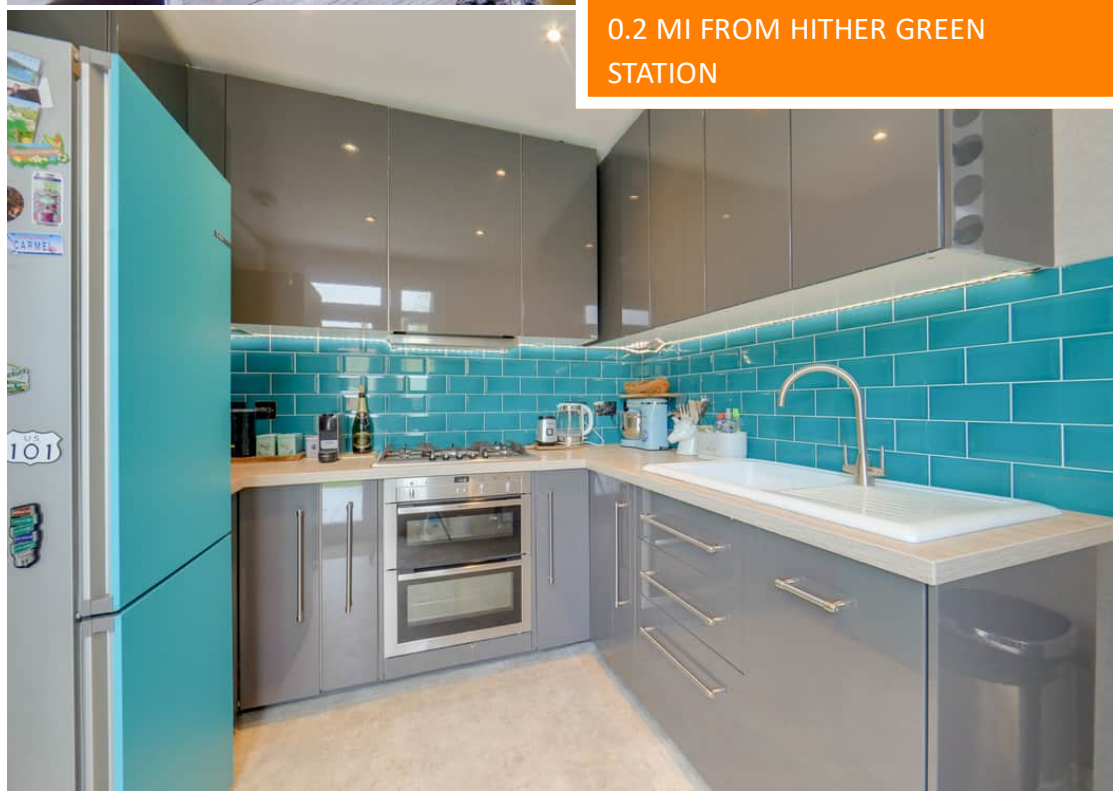
Call 020 8852 0026 or email us at hithergreen@stanfordstates.london to arrange a viewing or request further information

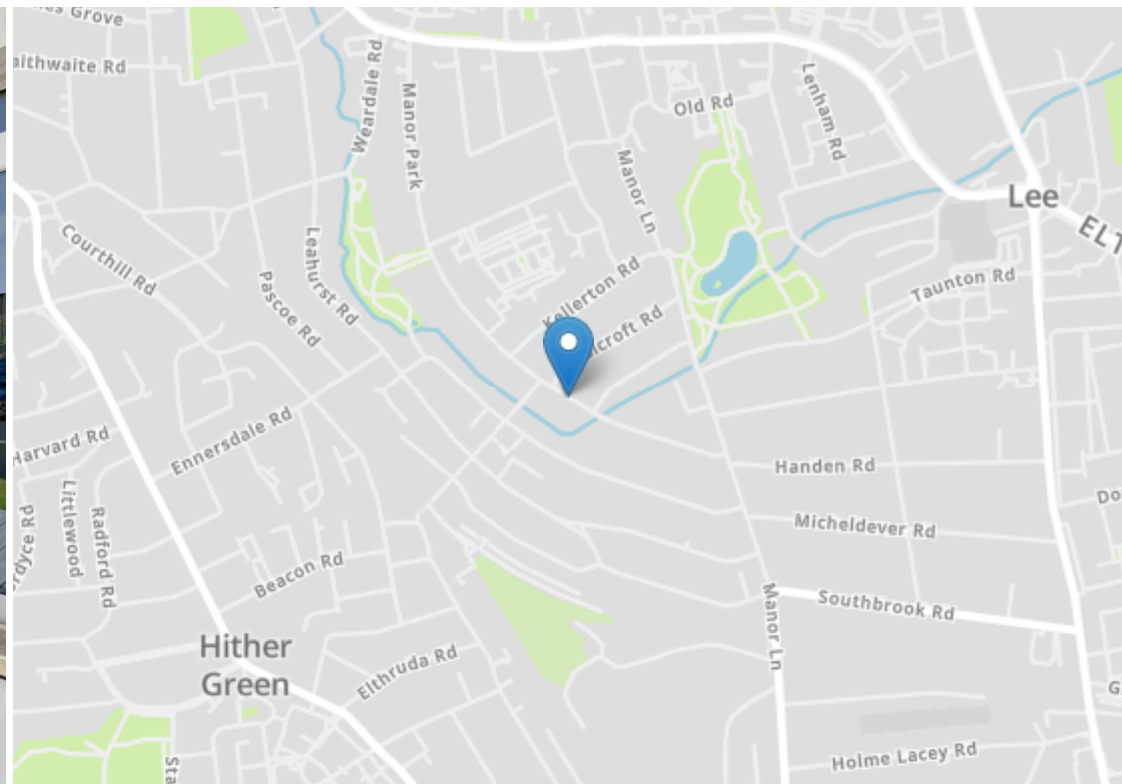
www.stanfordstates.london



BEAUTIFULLY PRESENTED
OFF - STREET PARKING
0.2 MI FROM HITHER GREEN
STATION

PRIVATE GARDEN
UNFURNISHED
AVAILABLE FROM 12TH AUGUST 2024





Energy Efficiency Rating

	Current	Potential
Very energy efficient - lower running costs		
(92-100) A		
(81-91) B		
(69-80) C		77
(55-68) D		
(39-54) E	52	
(21-38) F		
(1-20) G		
Not energy efficient - higher running costs		
England, Scotland & Wales	EU Directive 2002/91/EC	



Robert Stanford Estates property particulars are produced in accordance with the Consumer Rights Act (2015) and should not be construed as a contract or offer. The contents of these property particulars are to provide a general illustration only and are inconsequential to any decisions to purchase a property. A potential buyer accepts that all representations made by these particulars are made in good faith on behalf of the seller and require verification by a buyers' legal and professional representatives prior to an exchange of contracts. We offer no guarantees for any structural component, service or appliance and while we make every effort to take accurate measurements and distances, they are illustrative only. Any reliance you place on information within these particulars is therefore strictly at your own risk.