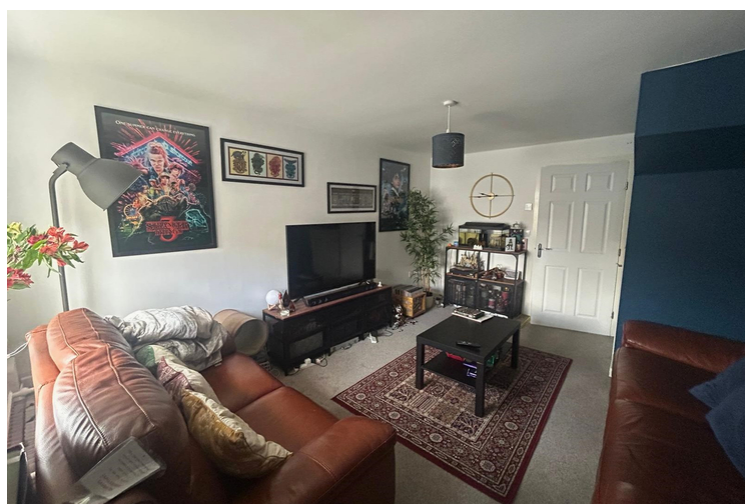


Reduced
26 Glatton Drive, Oakworth, Keighley, West
Yorkshire, BD22 7FD



- MODERN SEMI-DETACHED
- THREE BEDROOMS
- ACCOMMODATION OVER 3 FLOORS
- PARKING & GARDENS
- GAS CENTRAL HEATING & DOUBLE GLAZING
- EPC RATING B

OFFERS OVER £200,000

Keighley

01535 664609