

The Gatehouse Hurricane Way

HAWKINGE, Folkestone
CT18 7SS

£520,000 FREEHOLD

FOR SALE WITH BURNAP + ABEL... NOW WITH NO AGE RESTRICTION!!! Full Freehold.. The Gatehouse is an impressive detached residence with a stunning Georgian style façade, including double glazed sash style windows set beneath an attractive slate roof. This spacious home spans circa 2000 sq ft and offers a lounge, dining room, kitchen/dining room, ground floor W.C, four bedrooms, family bathroom and two en-suites. Additional benefits include off road parking, wrap around garden and no onward chain. For your chance to view call sole agent Burnap + Abel now on 01303 258590.



Entrance Hall

Lounge

25' 7" x 15' 10" (7.80m x 4.83m)

Dining Room

15' 6" x 10' 8" (4.72m x 3.25m)

Kitchen/Breakfast Room

25' 7" x 12' 4" (7.80m x 3.76m)

Cloakroom

First Floor Landing

Bedroom One

16' 0" x 12' 3" (4.88m x 3.73m)

En-Suite

Bedroom Two

16' 4" x 10' 9" (4.98m x 3.28m)

En-Suite

Bedroom Three

12' 8" x 11' 9" (3.86m x 3.58m)

Bedroom Four

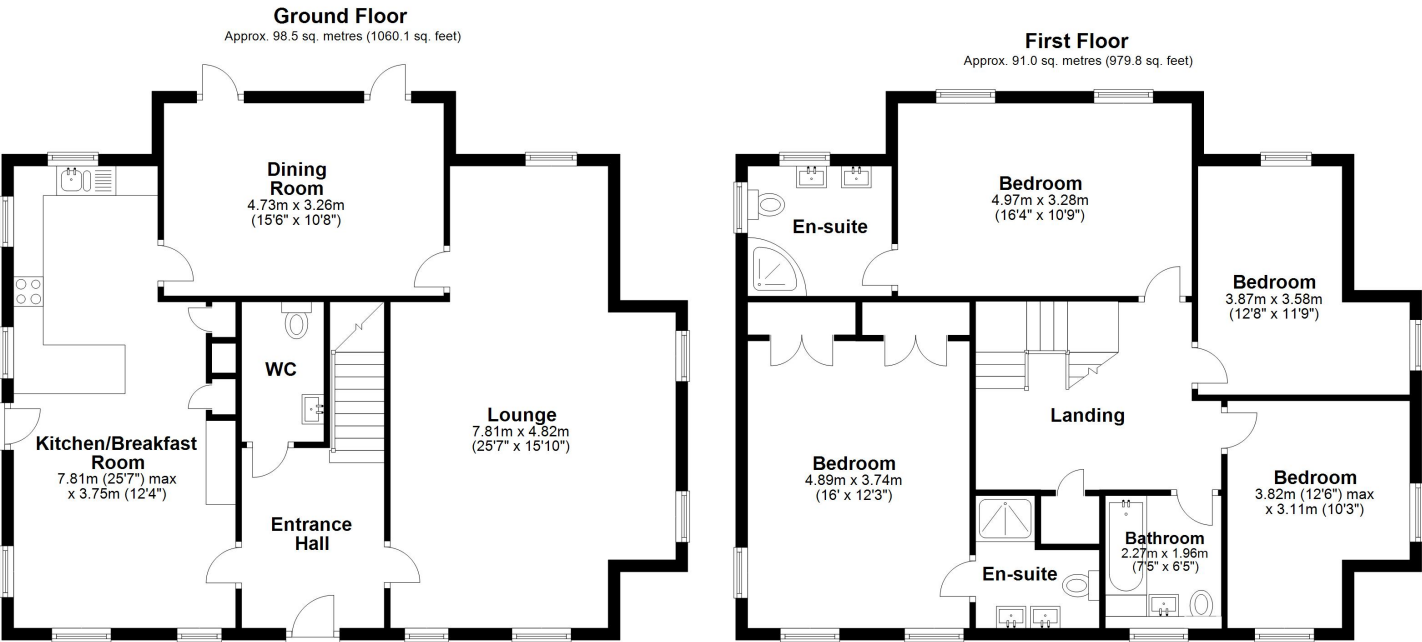
12' 6" x 10' 3" (3.81m x 3.12m)

Family Bathroom

7' 5" x 6' 5" (2.26m x 1.96m)

Off Road Parking

Gardens



Total area: approx. 189.5 sq. metres (2039.9 sq. feet)

Whilst every attempt has been made to ensure the accuracy of the floor plan contained here, measurements of doors, windows, rooms and any other items are approximate and no responsibility is taken for any error, omission or mis-statement. This plan is for illustrative purposes only and should be used as such by any prospective purchaser.
Plan produced using PlanUp.

