

Asking Price

£395,000

Freehold

46 HAYES LANE, COLEHILL, WIMBORNE, DORSET BH21 2JF



- ◆ **DETACHED BUNGALOW**
- ◆ **THREE DOUBLE BEDROOMS**
- ◆ **SCOPE TO EXTEND (STPP)**
- ◆ **DETACHED SINGLE GARAGE**

A secluded, three bedroom, detached bungalow boasting scope to extend, as well as a detached garage, and being offered without a forward chain.

Property Description

The property occupies a private and secluded plot on this popular residential road. The accommodation comprises of a triple aspect living room, three double bedrooms, two with built-in wardrobes, kitchen and family bathroom with separate WC. The home has been double glazed throughout, benefits from gas fired heating and, in our opinion, offers scope to be extended (STPP).

Gardens and Grounds

The front garden is primarily laid to a tarmacadam driveway which is suited to several vehicles, and this in turn gives access to the detached single garage with an up and over style door. There is a brick-built wall between the bungalow and garage which incorporates a garden gate that denotes access to the rear garden which extends around three elevations of the property. The garden is generally private and screened by a variety of closed panel fences and mature laurel hedging.

Location

Wimborne is a vibrant and thriving market town in East Dorset with a comprehensive mix of shopping facilities, restaurants, and attractions to appeal to everyone. Easily accessed by car from all directions via the A31, A35 and B3081 Wimborne has great public transport links to Bournemouth, Poole and surrounding areas including a comprehensive network of bus routes. Wimborne is immersed in a varied history, preserved and on-show in the c.705 AD Minster Church of Cuthburga with its chained library which is one of only four world-wide. The beautiful twin towers of the Minster provide an elegant backdrop to the town's historic architecture and alongside The Priest's House Museum & Gardens, Wimborne Model Town and the 1930's Art Deco Tivoli theatre, combine to make Wimborne a popular tourist attraction. Wimborne is well served by an excellent range of services for residents including doctors, a local hospital, a pyramid of sought-after schools and strong health and social care. Leisure facilities are well catered for and the town is within easy access to the county's areas of outstanding natural beauty offering miles of bridleways, footpaths and coastal routes to explore.

Size: 907 sq ft (84.2 sq m) including garage

Heating: Gas fired (vented)

Glazing: Double glazed

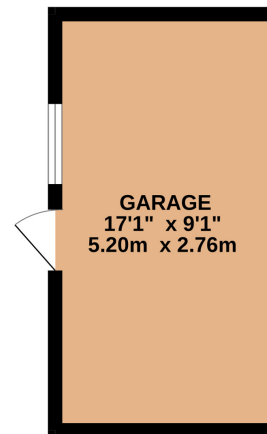
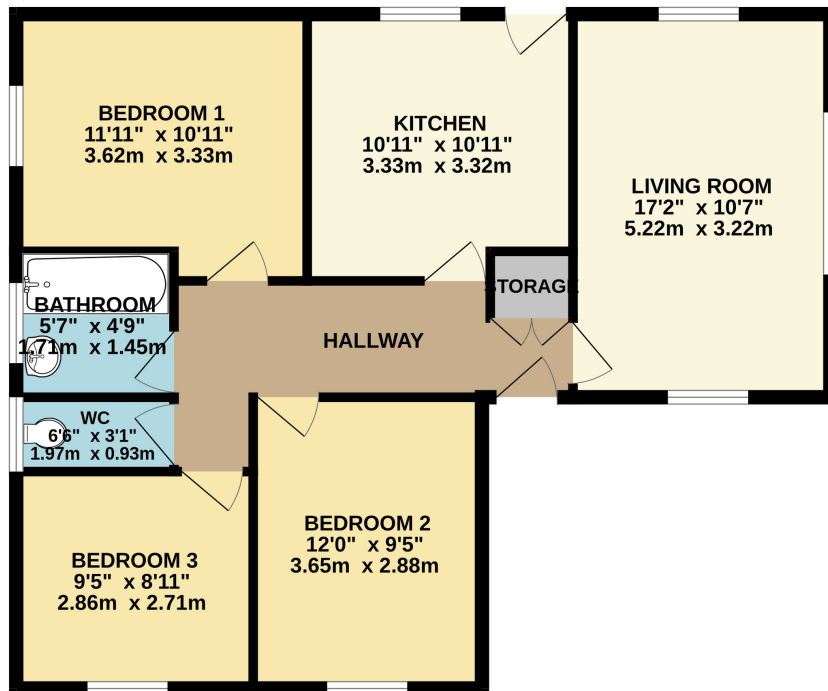
Parking: Driveway and single garage

Garden: North facing

Main Services: Electric, water, gas , drains, telephone

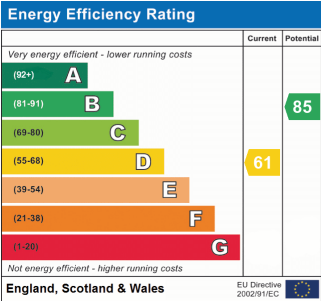
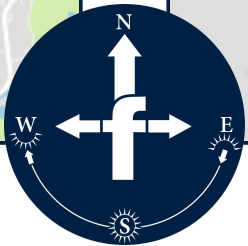
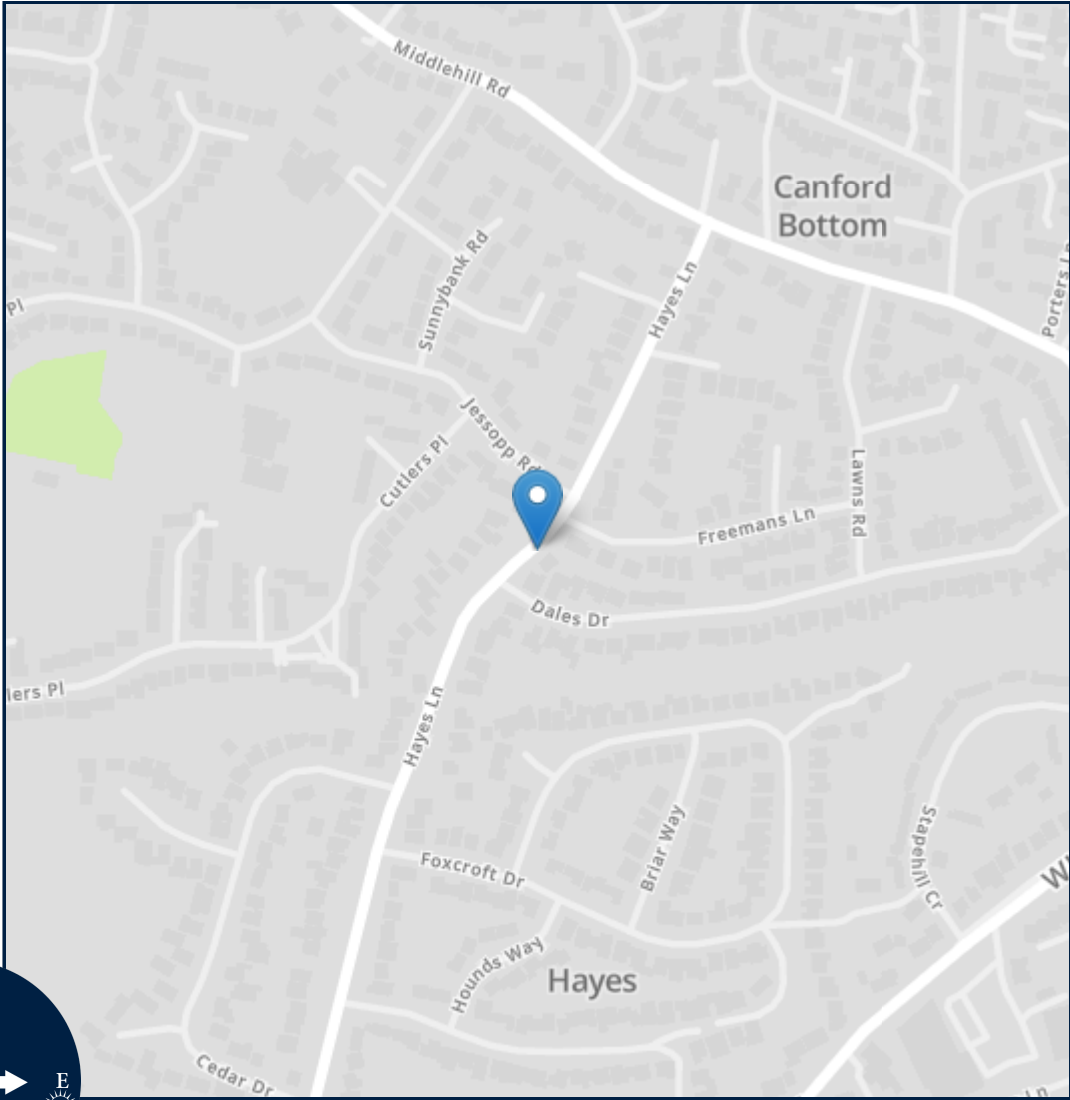
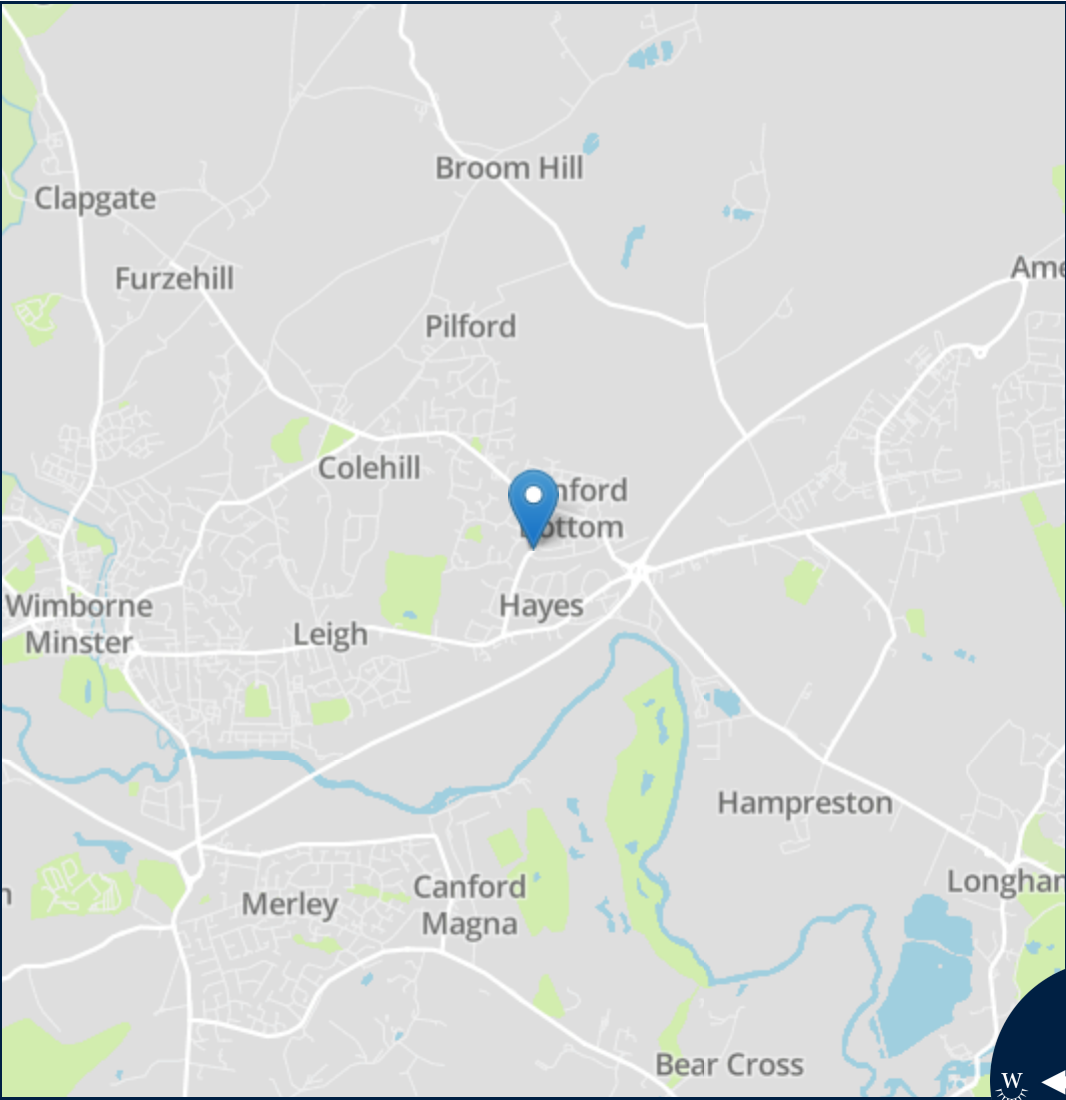


GROUND FLOOR 907 sq.ft. (84.2 sq.m.) approx.



TOTAL FLOOR AREA : 907 sq.ft. (84.2 sq.m.) approx.
Measurements are approximate. Not to scale. Illustrative purposes only
Made with Metropix ©2024





Important notice: Fisks Estate Agents, their clients and any joint agents give notice that 1: They are not authorised to make or give any representations or warranties in relation to the property either here or elsewhere, either on their own behalf or on behalf of their client or otherwise. They assume no responsibility for any statement that may be made in these particulars. These particulars do not form part of any offer or contract and must not be relied upon as statements or representations of fact. 2: Any areas, measurements or distances are approximate. The text, photographs and plans are for guidance only and are not necessarily comprehensive. It should not be assumed that the property has all necessary planning, building regulation or other consents and Fisks Estate Agents have not tested any services, equipment or facilities. Purchasers must satisfy themselves by inspection or otherwise.



12 East Street, Wimborne,
Dorset, BH21 1DS
www.fisksestateagents.co.uk
01202 880000