



16, Heronswood Road

Welwyn Garden City,
Hertfordshire, AL7 3NU
Guide Price £475,000

country
properties

NEVER JUDGE A BOOK BY ITS COVER... This otherwise unassuming terraced home close to the town offers 4 bedrooms one of which is located on the ground floor and has its own ensuite, there is a refitted kitchen and family bathroom and ample parking, a must view!

- 4 BEDROOM
- OFF ROAD PARKING
- LARGE REAR GARDEN
- GROUND FLOOR BEDROOM WITH ENSUITE

Ground Floor

Entrance Hall

Solid wood flooring, stairs leading to first floor, door leading to ground floor bedroom, walkway leading to living room.

Living Room

Continuation of solid wood flooring, thermostatically controlled radiator, double glazed UPVC windows overlooking front, TV aerial ports, phone line, opening to open plan kitchen/diner, under stair storage.

Kitchen/Diner

Continuation of solid wood flooring, thermostatically controlled radiator, double glazed French doors leading to rear garden, space for freestanding fridge/freezer, black vinyl front wall and floor storage cupboards, space for under the counter washing machine, integrated sharp dishwasher, integrated five burner gas hob with integrated oven below, Integrated extractor hood over, solid oak worktops, circular stainless steel sink basin with Chrome mixer tap, double glazed UPVC window overlooking the garden.

Ground Floor Bedroom

Carpeted, thermostatically controlled radiator, double glazed UPVC windows overlooking the front, opening leading to en suite bathroom.

En Suit

Three piece bathroom suite comprising of walk in thermostatically controlled shower, low level WC with dual flush, sink basin with Chrome mixer tap, grey tiled flooring, lighter grey wall tiles, extractor fan, radiator.



First Floor

Landing

Wooden floor boards, thermostatically controlled radiator, double glazed UPVC window overlooking the rear garden, doors leading to all upstairs rooms.

Bedroom Two

Continuation of floorboards, thermostatically controlled radiator, double glazed UPVC windows overlooking the front, built in over the stairs wardrobe.

Bedroom Three

Carpeted, thermostatically controlled radiator, top glazed UPVC windows overlooking the front, built in over the stair storage.

Bedroom Four

Carpeted, thermostatically controlled radiator, dual aspect double glazed UPVC windows overlooking the garden.

Bathroom

Three piece bathroom suites comprising of tiled bath with Chrome mixer taps and electric power shower overhead, pedestal sink basin with Chrome mixer tap, low level WC with dual flush, tiled flooring, tiled walls, extractor fan, dual aspect frosted glass double glazed UPVC windows overlooking the garden, spotlights.

Outside

Front Garden

Block paved drive leading up to front door, parking for two cars, hedges creating border and large magnolia tree, side access to back garden.

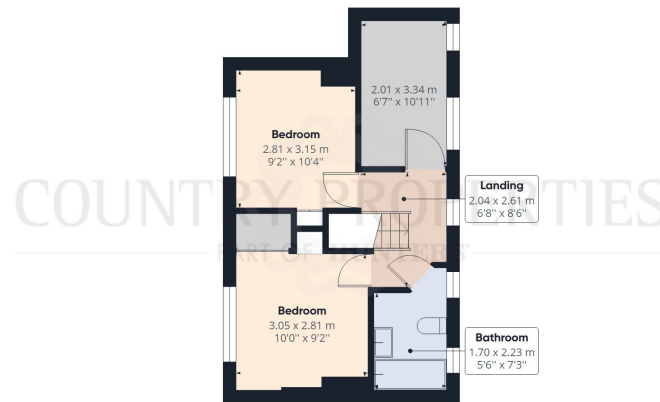
Back Garden

This large south-west facing garden comprises of large decking area as you leave the kitchen, mainly laid to lawn at the back of the garden, large pine tree, two sheds and hedges either side, outdoor power sockets.





Ground Floor



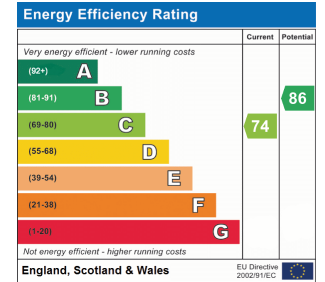
Floor 1

Approximate total area⁽¹⁾
88.62 m²
953.90 ft²

(1) Excluding balconies and terraces

While every attempt has been made to ensure accuracy, all measurements are approximate, not to scale. This floor plan is for illustrative purposes only.

GIRAFFE360



All measurements are approximate and quoted in metric with imperial equivalents and for general guidance only and whilst every attempt has been made to ensure accuracy, they must not be relied on. The fixtures, fittings and appliances referred to have not been tested and therefore no guarantee can be given and that they are in working order. Internal photographs are reproduced for general information and it must not be inferred that any item shown is included with the property. For a free

Viewing by appointment only

Country Properties | 3, Bridge Road | AL8 6UN

T: 01707 339146 | E: welwyngc@country-properties.co.uk

www.country-properties.co.uk

country
properties